

EX  
LIBRIS  
Putnam  
High  
School  
30

# The Silhouette



Published by  
The Senior Class  
of  
Putnam High School  
Palatka, Florida  
1930

## Foreword

The graduating class of 1930 has ever been an ambitious group. It has always been their desire to do things better than they have been done before. We believe that this book which we now present to the public will furnish a fitting climax for our four years achievement in the high school.

We have worked at the job and have sought to make the book worthy of the grand old school in whose name it is published; we hope that it outranks the best. May it serve as a treasure-house of memories to one and all who in the years to come turn through these pages and see again the images of their schoolmates as here represented full of youthful happiness and dreams of future greatness.

—The Staff



## DEDICATION

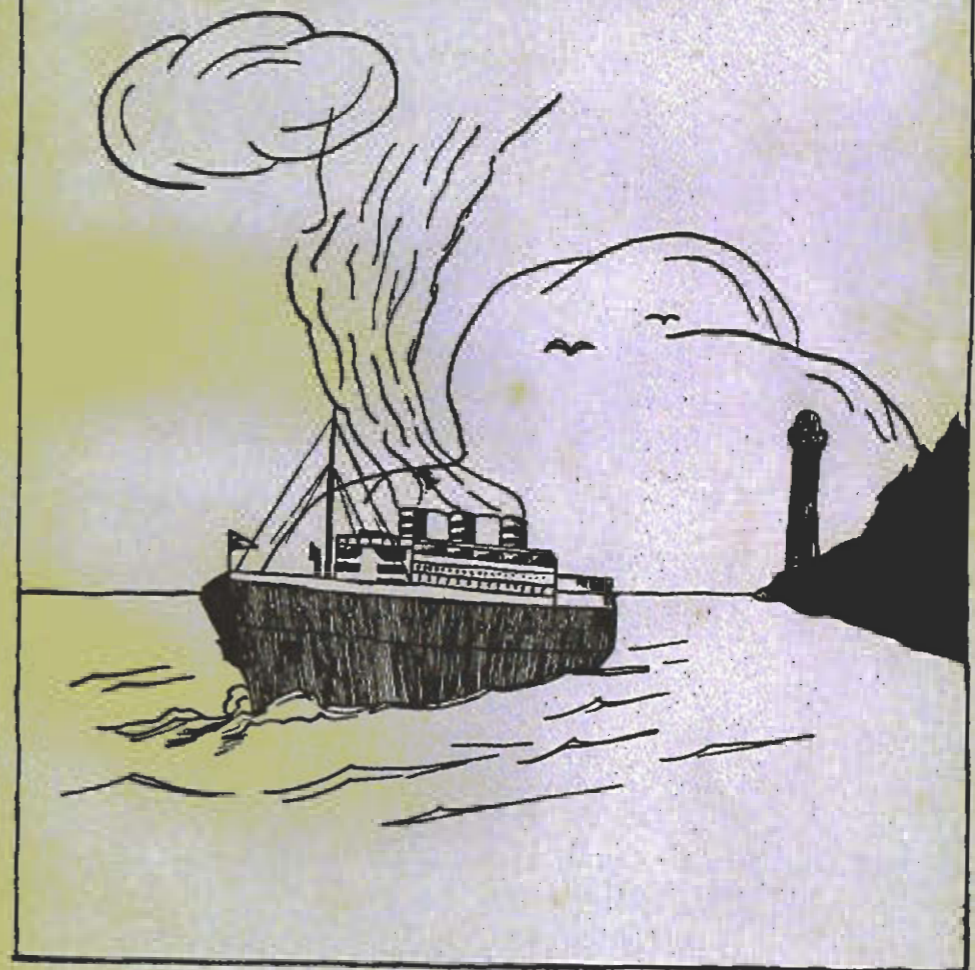
As a tribute to our "Fighting Maroon"—the State Champion Baseball Team of 1929—we proudly dedicate the 1930 Putnam High School Annual. We shall always remember this team which made high school baseball history.

Top Row—"Pop" Buck, George Beck, J. P. Stanley, Joe Kinchel, George Diamond, Harry deMontmollin, Lyle Buck, Coach Cecil Beck.  
Bottom Row—J. B. Davis, Robert Jones, O. I. Roberts, Clyde Miller, Hubert Hiers, Shaw Beck, Grady Fowler.

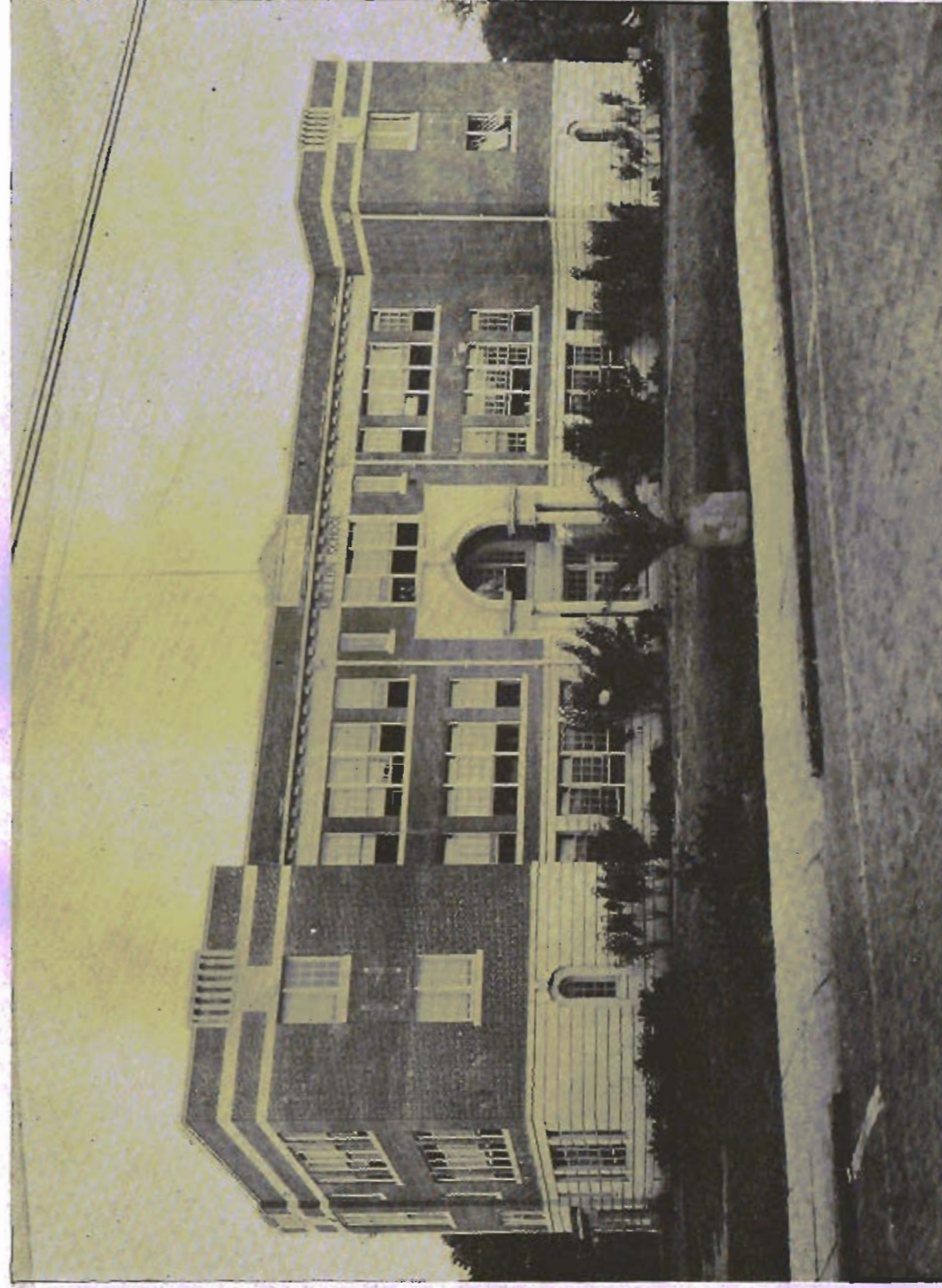
## Contents

- BOOK ONE—  
—*The School*
- BOOK TWO—  
—*The Classes*
- BOOK THREE—  
—*Athletics*
- BOOK FOUR—  
—*Features*

# SCHOOL



[Blank white rectangular area]



PUTNAM HIGH SCHOOL

Silhouette  
1930

## Our Alma Mater

Once again here as schoolmates assembled,  
We fain would lift our hearts in song  
To our High School, our dear Alma Mater,  
Let gladness our moments prolong.  
We are proud of our lads and our lassies—  
Of honors won in days gone by.  
So here's a cheer for our old High School,  
For our old High School, our dear old High.

(Chorus)

Here's to our classes, here's to our lassies,  
Here's to the lads they adore;  
Here's to the Seniors so mighty, Juniors so flighty,  
Freshies and Sophomores!  
Let mirth and gladness banish all sadness;  
And as the days go by,  
You'll find us ready and steady,  
Always boosting for our old High.

Soon for us will our school days be ended,  
And dreams of youth that fade so fast;  
And we know that our hearts oft will ponder  
On memories of scenes that are past.  
There are joys that will long be remembered,  
And friendships, too, that ne'er will die—  
So here's a cheer for our old High School,  
For our old High School, our dear old High.



SCENE NEAR PALATKA

Silhouette

Silhouette



THE LARIMER MEMORIAL LIBRARY

THE  
Silhouette  
1930

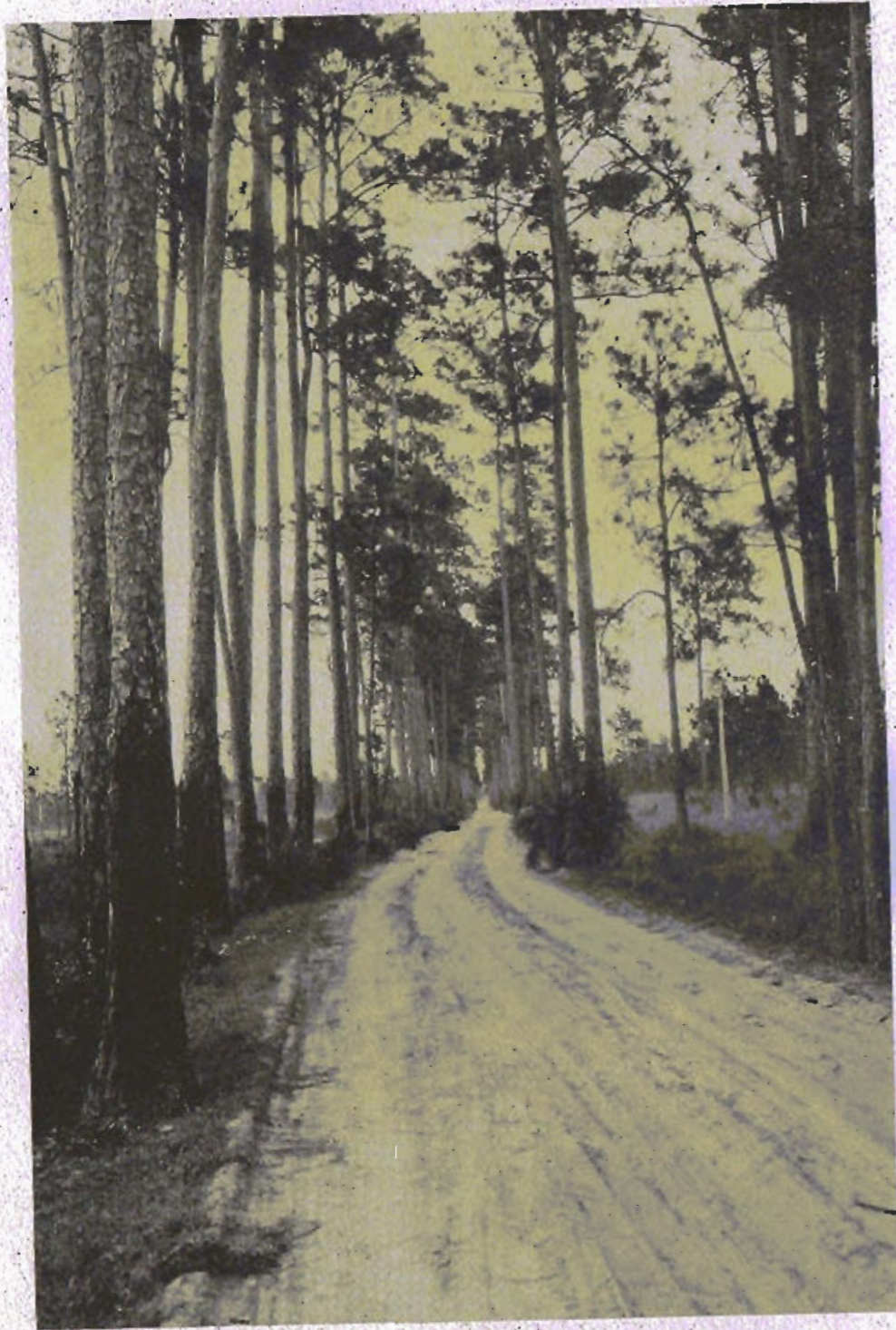
## The Larimer Memorial Library

The LARIMER MEMORIAL LIBRARY on the opposite page, was erected to the memory of RACHEL HUGHEY LARIMER by her husband, James Ross Mellon. They came to Florida in 1883 from Pittsburg, Pa., and have returned each winter to Palatka to No 424 Emmett Street. Mrs. Mellon died on her arrival home in Pittsburg on May 7th, 1919, aged 73 years. Mr. Mellon has continued to return to Palatka each winter since.

Mrs. Mellon loved Palatka and its people. She was a generous contributor to their activities and always interested in Palatka and its welfare.

THE  
Silhouette  
1930





TYPICAL SCENE IN FLORIDA WOODED FLAT LANDS

Silhouette  
1930



IRISH POTATO FIELD NEAR PALATKA

Silhouette  
1930



THE WHOLE BUNCH





WILLIAM W. CARTER

*Supervising Principal.*

A. B. Indiana University.  
Graduate Student Columbia University, Indiana University, and University of Miami.



C. H. PRICE

*County Superintendent*

Graduate Stetson University.  
Student Valparaiso University School of Medicine.



ESTELLE MCKENZIE

*History*

Florida State College for Women,  
Columbia University summer, U. of  
Ga. summer.

LOUELLA ROUSE

*Home Economics*

B. S. Florida State College for Women.  
Graduate student Columbia University.

MARGARET JONES

*English and Spanish*

A. B. Florida State College for women.  
Graduate Student University of Colorado and New Mexico State College.

JOSEPHINE WRIGHT

*English and Latin*

A. B. Florida State College for Women.





LELAND F. ALLEN

*Biology and Algebra*

B. S. State C. for Teachers, Albany,  
N. Y.; M. A. St. Lawrence U., Canton,  
N. Y.

FRANCES BAKER

*Mathematics*

A. B. Georgia State College for  
Women.

E. F. GUNN

*Science and Mathematics*

*Phys. Education.*

B. S. in C. E. University of Florida.

MRS. H. P. SKIDMORE

*Science and English*

B. S. Florida State College for Women.  
Student Rollins College and  
University of Tenn.



H. P. SKIDMORE

*Science and Mathematics*

A. B. Transylvania College,  
Graduate Student U. of Ky.

NELLIE ELLERBE

*History and Civics*

*Physical Ed.*

B. S. Winthrop College.

MYRA RAMSEY

*English, Occupations,*

*Jr. B. Training*

A. B. Winthrop College.

MRS. T. A. COMPTON

*English*

Student University of Florida and  
Florida State College for Women.



**MRS. W. W. CARTER**  
*Geography, History and Spelling*  
A. B. Central Normal College, Dan-  
ville, Ind.

**MAMIE DAVIS**  
*Arithmetic*  
Student Florida State College for  
Women.

**VIRGINIA ATHON**  
*History and English*  
A. B. University of Georgia.

**SUSIE WALTON**  
*Expression*  
Certificate of Expression  
Weslyan College, Macon, Ga.  
Student Asheville Normal and Uni-  
versity of Tenn.



# CLASSES



SENIORS

1930



ch. leggiller

Silhouette  
1930



MISS ESTELLE MCKENZIE

Senior Sponsor

"We shall be ashamed not to be what she expects us to be."



SARA GOETHE

TOM PERRY

(Mascots)



Walter Warren

Spent four years in P. H. S.  
President Freshman Class  
President Junior Class  
President Senior Class  
Spanish Play  
Senior Fellows' Club.



Lennell Wells

P. H. S. four years.  
Assistant Art Editor, Silhouette 1929  
and 1930.



Peggy Haile

Home Economics Club; Prattler Staff '28; Civics Club; Annual Staff, '28, '29; Pi Epsilon '30; Fashion Walk; Dramatic Club; "Here Comes Arabella"; "Aunt Saphronia at College"; "Microbe of Love"; "Her Step-Husband"; "Aunt Lucia"; Librarian '28, '29; Basketball '28, '29, '30.



Jimmy Murphy

Spent three years in Crescent City High School. Entered P. H. S. fall of '29. Senior Fellows Club, '30; Football, Basketball and Baseball, '29 and '30.



Audrey Hoogboom

Sec. Pres. of Class '27; Prattler Staff '27; Annual Staff '28; "Here Comes Arabella"; "Microbe of Love"; "Aunt Lucia"; Basketball '27, '28, '29, '30.



Blyde Miller

Four years in P. H. S. having previously attended a year each in Crescent and Indianville High Schools. Class Leader '28, '29, '30; "Her Step-Husband"; "Aunt Lucia"; Annual Staff '29, '30; Senior Fellows Club '30; Football '29, Basketball '29, '30.





*Shaw S. Buck*

Football '26 to '29. Captain team '28, '30; All-State Quarterback; Basket-ball '27 to '30; Captain team '27 to '29; Baseball '27 to '30, All-State First Base-man; Captain team '30; Senior Fellows Club.



*Jessie Conway*

High School Pianist; "Cupid Up to Date"; Dramatic Club, "Here Comes Arabella"; "Betty's Last Bet"; "Microbe of Love"; "The Charm School"; Civics Club; Home Economics Club.



*Hubert Hiers*

Football '27, '28, '29; Baseball '27, '28, '29, '30; All-State Second-baseman; "Her Step-Husband"; Senior Fellows Club.



*Sileen Mairs*

P. H. S. '27-'28, '29-'30; Spent one year each in Apalachicola and New Orleans. Basketball '27; Pi Epsilon Club.



*Ernest Whitehorn*

P. H. S. '26-'30; Basketball team four years. Manager, '28; Prattler Staff '28; Pi Epsilon; Home Economics Club; Annual Staff; Civics Club; "Here Comes Arabella"; "Microbe of Love"; "Aunt Lucia"; "Charm School"; Fashion Walk.



*E. Wayne Green*

Spent three years in P. H. S., having done third year's work in Hastings H. S. Senior Fellows' Club; Basketball '30.



*Virginia Stanton*

Transferred from Laurel H. S. '27. Basketball '28, '29, '30; Manager team '30; Second All-State Team '29; Pi Epsilon Club; Annual Staff.



*Frances Baker*

Transferred from Robert E. Lee H. S. as Junior P. H. S. '29, '30; "Microbe of Love"; Pi Epsilon Club.







*Margaret Gross*

Home Economics Club; Civics Club; Prattler Staff; Dramatic Club; "Her Step-Husband"; Microbe of Love"; Basketball '28; Sec.-Treas. Pi Epsilon Club.



*Donna Latta*

Transferred from DeLand H. S. '28. Fashion Walk; Oration, Spanish Play '30.



*Nina Hayes*

Transferred from Ocala H. S. 1927. Basketball '27; Spanish Play '30.



*Ethel Willows*

From Schenley High, Pittsburg, Pa., '28; "Microbe of Love"; "Her Step-Husband"; Expression Class.



Silhouette



*Wenna Luttrell*

President Class '27; President Student Council '27; Prattler Staff '27; Queen of Carnival '28; Home Economics Club; Civics Club; "Here Comes Arabella"; Sec. Class '29; Voted prettiest and most popular girl '28; Librarian '30; Pi Epsilon.



*John Bury Harris*

Four years P. H. S. Baseball '28, '29, '30; Football Junior and Senior years; Black Mask Dramatic Club '28; "Her Step-Husband"; Annual Staff; Senior Fellows' Club.



*Lovey Comick*

Four years P. H. S. Home Economics Club, Civics Club; Librarian '29, '30.



*Kaness Kindred*

P. H. S. four years. Dramatic Club; Chapel Program '27.



Silhouette



*Hollyday Hudgins*

Football '26, '27, '28, '29; Basketball '28; Vice Pres. Frshman Class; Pres. Sophomore Class; Vice Pres. Junior Class; Senior Class Treasurer; "He's My Pal"; President Senior Fellows' Club; Editor-in-chief Silhouette '30.



*Marjorie*

P. H. S. four years. Basketball '28, '29, '30. All-State guard; Capt. team '30; Dramatic Club; Prattler Staff; Cheer Leader '29, '30; Sec. Senior Class; Pi Epsilon; Business Manager, Silhouette '30.

*Vera Couver*

P. H. S. four years. Basketball '29; Spanish Play '30.

*Alley King*

P. H. S. four years. "Microbe of Love"; "Her Step-Husband"; "Here Comes Arabella"; "Aunt Lucia"; Spanish Play.

*Jeanette Roberts*

Girls Club; Literary Digest Club; spent last year in St. Petersburg H. S.



*Julia Harshbarger*

P. H. S. four years. Home Economics Club; Girls Club; Librarian '29, '30.



*Brady Fowler*

Three years in P. H. S. Transferred from Mass. H. S. Basketball '28, '29; Football '28, '29; Basketball '30; "The Top Hat Club"; Senior Fellows' Club.





*William V. Chester*

Four years in P. H. S.  
Civics Club; Dramatic Club; Senior  
Fellows' Club.



*Pauline Prevatto*

Four years in P. H. S.  
Spanish Play; High School Pianist.



*Mabel Thomas*

P. H. S. 1926-27, 1927-28, 1928-  
29, 1929-30.  
"Aunt Lucia"; Spanish Play.



*Irene McManus*

P. H. S. four years.  
Spanish Play.



*Wm Groves*

P. H. S. 1926-27, 1927-28, 1928-  
29, 1929-30.  
Senior Fellows' Club.



*Lu Gene Rice*

Came to P. H. S. from St. Joseph's  
School in 1929. "Microbe of Love";  
Spanish Play; Pi Epsilon Club.



*Joyce Minton*

Four years in P. H. S.  
High School Central; Football '27,  
'28, '29, Basketball '28, '29, '30; Base-  
ball '28 Senior Fellows' Club.



*Luella Gardner*

Four years in P. H. S.  
High School Central; Spanish Play; Pi Epsilon Club.





*Skett Watson*

Transferred from Daytona Beach H. S. P. H. S. 1929-30.

Football; "Aunt Lucia"; Spanish Play; Manager Boys' Basketball team; Silhouette Staff; Baseball; Senior Fellows' Club.



*Evelyn Rison*

Transferred from Kissimmee H. S. Spent senior year in P. H. S. Basketball; Pi Epsilon Club.



*Gladys Ladd*

Spent four years in P. H. S. Spanish Play.



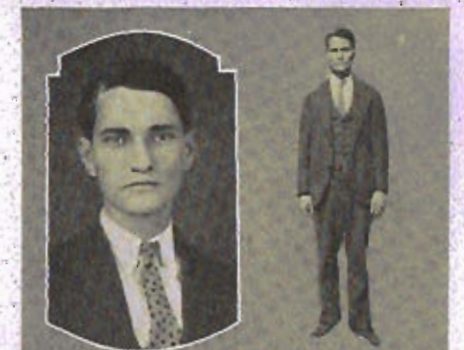
*Evelyn Miller*

One year in Sarasota H. S.; one year in Gainesville H. S.; last two years in P. H. S.

"Her Step-Husband"; Microbe of Love! Silhouette Staff; President Pi Epsilon Club.



Silhouette



*Daniel E. Smith*

P. H. S. four years. Expression Class; Thanksgiving Day Address; Senior Fellows' Club.



*Gracia H. Knighton*

Four years P. H. S. Class Treasurer '27, '28; Home Economics Club; Civics Club; High School Carnival; "Here Comes Arabella"; Librarian '30; Pi Epsilon.



*Alene Brantley*

Transferred from Hollywood Central '27; Last three years in P. H. S.

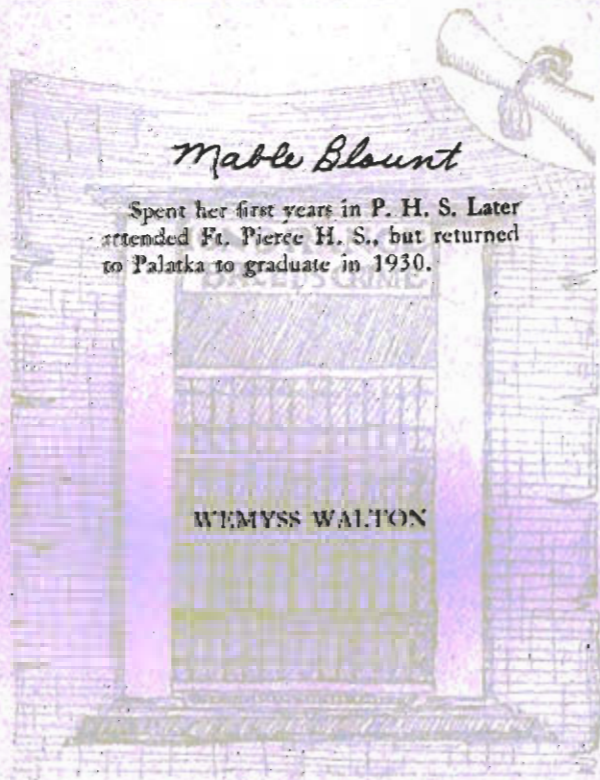


*Jewel Estelle Minton*

P. H. S. four years. Civics Club '27; Expression Class '30.



Silhouette



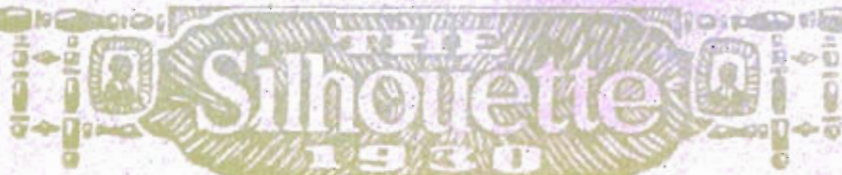
*Mable Blount*

Spent her first years in P. H. S. Later attended Ft. Pierce H. S., but returned to Palatka to graduate in 1930.

WEMYSS WALTON

This is the last of a jolly group  
 At the end of a perfect day—  
 To find a wiser, merrier crowd,  
 You must go a long, long way.

Reluctantly we say good-bye  
 To school and class-mates all—  
 This book will in the future days  
 These happy scenes recall.



Last Will And Testament-Class of 1930

STATE OF FLORIDA  
 COUNTY OF PUTNAM

We, the members of the class of 1930 of Putnam High School, being of sound mind and memory, and understanding the uncertainty of school life, do hereby publish and declare our last will and testament.

Article I.

To the members of the faculty we make the following bequests: To Mr. Carter we leave our library on "How To Raise Children". To Mr. Skidmore we bequeath our good conduct and the doubtful privilege of keeping quiet in the halls. To the rest of the faculty we will our wise cracks and foolish questions to have and to hold forever.

Article II.

Grady Fowler leaves his well-groomed hair and smooth shaven face to Tubby Tilghman. May the latter be as big a success.

Willie Chester leaves a trail of broken hearts behind him.

Lillian Meigs says she has nothing to leave but Shaw and that she must take him with her for comfort and protection.

Hubert Hiern bequeaths his wonderful knowledge to Marjorie Carter.

Fernand Baker leaves her all to Eleanor Houston.

Walt Watson leaves his musical voice and great store of knowledge to John Murphree, whether John needs it or not.

Joseph Murphy leaves his winning smile to Duke Hutchinson.

Francis Kindred leaves her loud and boisterous ways to the quiet and demure little Mary E. Brown.

Mary Brown and Virginia Stanton leave the title of *Sister* to next years guards.

Blake East bequeaths her peroxide bottle with all necessary instructions to Red Chesser. Lillian Larkins leaves her sylphlike figure and her book on *How to Grow Slim* to Betty Maxwell.

Grady Minton bequeaths his book which made him famous to Allen Davis. The title of this book is "How to Make Love". Audrey Hogeboom wills the name of her checks to Al Walton. Coach Fowler is the proud recipient of W. N. Gross' words flow of speech. It should be worth a fortune.

Pratt Halle bequeaths to Emily Campbell her vampish ways with the hope she Emily will thus be enabled to capture the man of her dreams. Walter Warren and Hallydie Hallydie respectively leave their giant intellects to Tom Mobley and Byard Kegan with the hope that this added power will enable them to graduate by 1941.

Red Davis bequeaths his esbarn hair dye to Catherine Cannon. Minna Buttriss leaves her plumpness, smile and great beauty to all the girls of the junior class to be used in any way they desire and share alike.

Walter Brown leaves his winged sandals to Hamp Enzor to use during the 1930 school year. Gladie Miller with his helpfulness to Jack Blake.

Carl Williams leaves his air of independence and her History grades to Emily East and Mary Edith Hunt.

Evelyn Bunn, Prudence Whitcomb, Lu Gene Rice, Gracie Knighton, and Evelyn Miller leave their hearts to P. Eganston as a goal toward which all good girls should strive.

Earl Van der Meer, whose back leaves his fall with the faculty and his athletic ability is a monument to the school. His future nothing can ever be equalled.

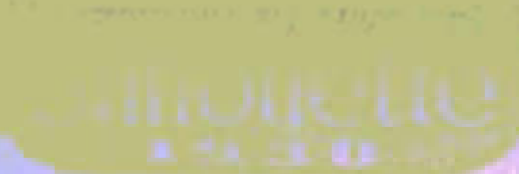
To the Junior Class, the faculty and the rest of the school, we will our school spirit and the privilege of being taught by the best teachers we have ever known.

We appear in our execution our beloved spouse, Miss Estelle.

Witnesses

Fred, Allen, Skidmore and Gunn.

Signed-Class of 1930.



## Prophecy Of Class Of 1930

Deep in the heart of South America, a tall bronzed man tightened the last screw on his makeshift radio. He turned a couple of dials and leaned forward expectantly to await results. Suddenly the speaker was filled with a fog, then a voice announcing:- "Hello, friends of radio-land! This is station B. L. A. H. broadcasting from Palatka, Florida over a frequency of 1000 kilocycles. This program is given through the courtesy of the United Undertakers of the World, personally supervised by me, John Berry Davis. The first number on the program is a solo by Miss Allie King, accompanied on the piano by Miss Pauline Prevatt, and on the violin by Miss Dorothy Cates".

After the solo was finished the fog-horn voice blurred forth again, "Now we shall hear a dialogue in Spanish between Misses Irene McManus and Catherine Kemp".

There was a pause and the announcer resumed, "We know that all our radio friends wish to hear the outcome of the Florida-Yale football game. The score was 0-0, which reflects credit admirably upon the ability of the coaches Buck of Florida and Hudgins of Yale. Buck was accompanied on this trip by his wife, the former Lillian Meigs. The two coaches mentioned are the greatest in their line since Knute Rockne."

"You will now hear other important news happenings of the day. Remember this is John Berry Davis announcing. from Station B. L. A. H. Grady Fowler, the powerful underworld leader of Miami, left for Chicago this morning for a conference with Al Capone in regard to a matter which is shrouded in deepest mystery. He was accompanied by his chief lieutenant, Hubert Heirs."

"President Dan Smith left his home in Peniel this morning to visit Secretary of State McRae to discuss the Mediterranean Fly menace. . . . Bear in mind this is John Berry Davis broadcasting." He continued—

"Mary Brown, coach of the Panthers, who are the world's champion Basketball team, announced today that Audrey Hogeboom would be the new manager as Sister Virginia Stanton, the former manager, has resigned to be married.

John Berry Davis of the United Undertakers of the World announcing".

A pause during which the bronzed man waited impatiently through a storm of static. Then came the voice of the announcer, "Jimmie (Stan) Murphy, star third-baseman of the Cubs is holding out for \$50,000 per year and a three year contract. As he is the greatest sensation since Babe Ruth, it is generally conceded that he will obtain the contract."

"Dr. William N. Gross, the greatest human authority on surgery, left New York today to attend a professional meeting in Berlin next month. Dr. Gross will demonstrate his new technique in surgery in his fa-

mous heart operation in which he will prove that a man dead three days may be brought to life by means of his dexterous manipulations of the knife upon the heart valves.

"Colonel Greasy Minton, Commander of the *Los Angeles*, passed over Paris this afternoon on his non-stop flight around the world. With difficulty the crew prevented him from landing because he saw so many attractive mademoiselles on the streets as he took observation through his powerful binoculars.

A game and then, "John Berry Davis announcing. . . . Walter Warren has increased his poolroom buildings and established three new ones in Crescent City"

"Lavinia Larkins has just been adjudged winner of the book of the year contest. The judges were Irene McManus, Gladys Ladd, and Mabel Thomas"

Peggy Hale left Atlantic City today for Hollywood to begin work on her new photoplay *Happy Fairy*. It is said that she has more *it* than *any* *girl*, or *Heaven of Troy*. She was accompanied by her leading man, *the* *actor*."

"Jimmy Green returned today from the Olympics with enough cups to fill a bathtub. He is the greatest half-miler the world has ever known."

"Lillian King and her dancing partner, Frances Baker, are now on the stage giving their country dances in Hastings. Ethel Willoure, the greatest tragedienne of history, has forsaken the stage to enjoy the freedom of a quiet Irish cottage at Orange Mills where she vows she will sit and watch the world go by."

"The warbling quartette made up of Gracia Knighton, Evelyn Rion, Frankie Whitthorne, and Vera Couver are now touring the west under the management of Sara Margaret Gross. Clyde Miller, the great cartoonist and sports writer is now managing the Florida Times Union."

"Charles Stumpe and William Chester have brought about a merger of the Chain Stores. It will be remembered that William is a nephew of the late Bill Henderson for whom he is named."

"Lennell Wells is now under contract to design all costumes for Flo Ziegfeld Follies".

"Alene Brantley stays at home much of the time, as her husband, President Smith, is often very busy with his duties at Washington. She says it is a terrible thing to have a famous husband. Her constant companion is Frances Kindred, wife of Secretary of State McRae."

"Evelyn Miller and her husband left Palatka today for Boaz Military Academy which was named for her husband. They are now laying plans for the next war. Aileen Harshbarger is head librarian of the new Carnegie Memorial Library. Her trusted helper is Lovey Comick."

Silhouette

1930

Silhouette

1930

Then came a long pause during which the listener in the South American Wilds almost gave up in despair. At length came the words again in a well known voice, "J. B. Davis announcing. It is rumored that the Watson Exploring Party will soon return to civilization after a thorough exploration of the little known city of Paris. It is said that this intrepid explorer has charted for the first time wildernesses of the unknown districts of this city, besides making many valuable archeological discoveries there."

"Corporal Wemyss of the U. S. Army, passed through Texas today on his way to quell the uprising of the sand flies on the Rio Grande. It is said that the Corporal and many of his valiant aids were grievously wounded in a previous encounter in that region."

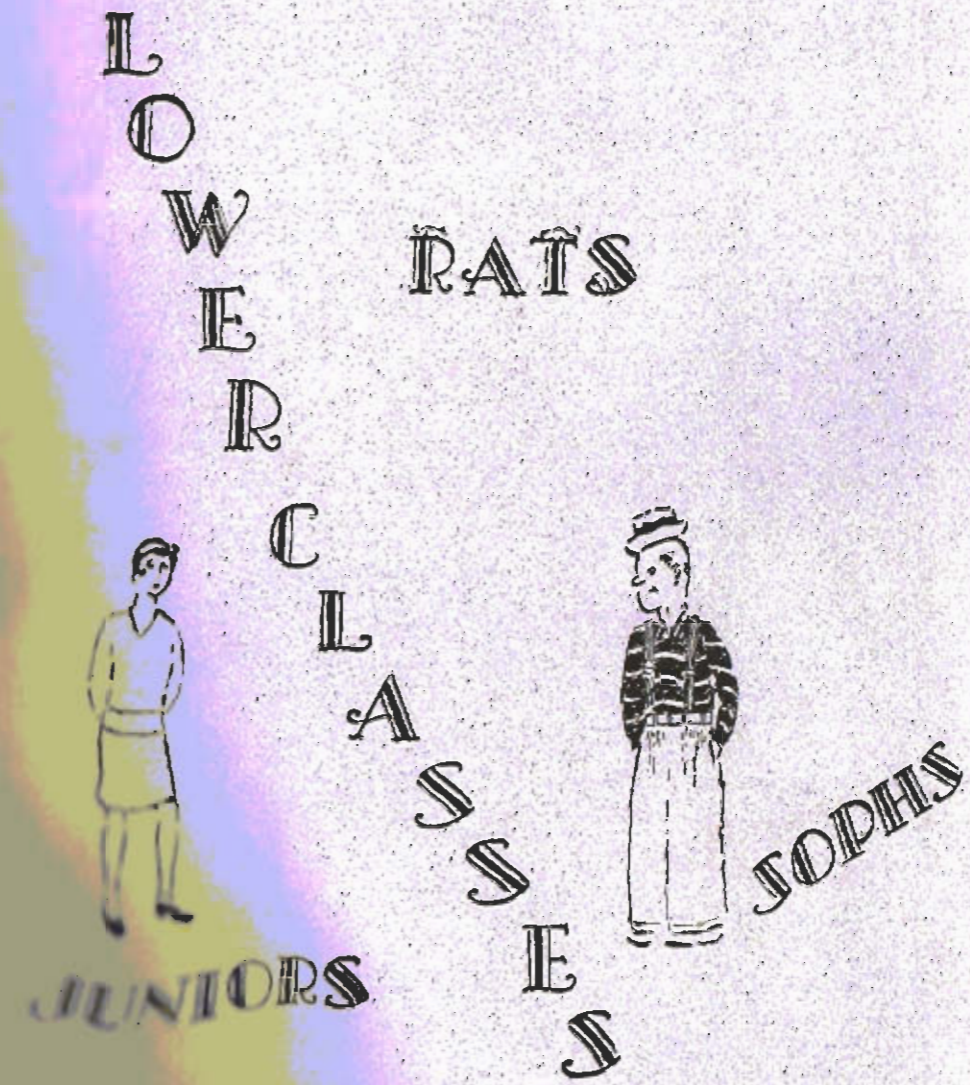
"Mable Blount is running a farm at Melrose. She has as her able helper, Jeanette Roberts. Minna Buttriss has been voted America's most beautiful girl and expects to succeed Elizabeth Arden in cosmetics advertisements."

"And now, Ladies and Gentlemen, I want to give you some advice on many notable affairs. First that I, John Berry Davis, am the greatest. As these words reached the ears of the tall bronzed man who was none other than our Shorty Gunn, he turned off the radio in disgust and drifted off to sleep unhindered by the fog-horn voice.

—Marvin Watson, 1930.

### What Graduate is as

- C - lever as Hookey Warren?
- L - iterary as Frankee Whitthorne?
- A - musing as Sara Margaret Gross?
- S - erious as Shaw Buck?
- S - weet as Minna Buttriss?
  
- O - bliging as Irene McManus?
- F - rank as Greasy Minton?
  
- T - all as Frances Baker?
- H - imself as much as Holly Hudgins?
- I - maginative as Willie Chester?
- R - efined as Evelyn Miller?
- T - actful as Skeet Watson?
- Y - oung (in actions) as Lu Gene Rice?





JUNIOR CLASS

## Junior Class

PRESIDENT—Jack Blake      VICE-PRES.—Garland McClaran  
 SECRETARY—Emily Hutt      TREASURER—Julia Barnett  
 SPONSOR—Louella Rouse

### ROLL

Julia Barnett	Eudora Dowda	Emma Lowe	Irma Smith
Jack Blake	Dorothea Dyke	Jane Marshall*	Marie Smith
Kathleen Bradshaw	Walter Enzor	Lillian McCall	Marie Tarver
Elizabeth Browning	Walter Fowler	Garland McClaran	Gertrude Thomas
Alton Browne*	Gertie Hall	Pau'ine McManus	Doris Thomas
Ethel Brown*	Stanney Harris	Carl Moore	John W. Tilghman
Emily Campbell	Maude Harshbarger	Tom Mobley	Nellie Usina
Catherine Cannon	French Harvey	Alice Murray	Albert Walton
Marjorie Carter	Daisybelle Hilliard	Edith Nielsen	Mayme Watson*
Willis Cheser	Eleanor Houston	Randall Parrish	Dorothy Yeagley
Edna Curry	Claud Hogeboom	Mary Peebles	
Homer Custard	Emily Hutt	Byard Respass	
Allen Davis	Henry Hutchinson	Edna Rosier	

\* Not in the picture

MASCOTS—Nancy Rosborough and Robert Blake

### Song of a Junior

Oh these are the wonderful days—  
 But the years are passing by—  
 They are bearing us swiftly away from  
 The haunts of our Putnam High.

We'll walk these paths together  
 Till the final goal is won,  
 And we'll make it sunny weather  
 'Till our school days here are done.

We bring both cheer and laughter  
 To make things here worth while—  
 Though sorrow may follow after—  
 Let's not forget to smile.

With courage and sturdy forbearance  
 And our 1930 smile—  
 There's only a short time to wait now—  
 It's only a little while.

—Margaret Myers.





### Sophomore Class (10 A)

VICE-PRES.—Mary Edith Hiers  
 SPONSOR—Margaret Jones

VICE-PRES.—Mary Edith Hiers  
 SPONSOR—Margaret Jones

#### ROLL

James Baker  
 James Cannon  
 Devereux Chamberlin  
 Dori Chase  
 Lawrence Chastain  
 Minnie Mae Cheslute

George Diamond  
 Mary C. Dorman  
 Irla Gale  
 Thomas Gullford  
 Eva Hancock  
 Claude Harper

Margaret Harper  
 Elizabeth Harrell  
 Irma Hayes  
 Donovan Hayes  
 Mary Edith Hiers  
 Wilton Hopper  
 Sherod Keene

Joe Kindred  
 Beth Knighton  
 Benjamin Marvick  
 Henry Miller  
 Philip deMontmoulin  
 Carol McGraw  
 Warren McRae

Evelyn McWatters  
 Harold Nielsen  
 LaVerne O'Keefe  
 Mattie Roberts  
 Maude Smith  
 Clifford Sullivan  
 Lucille Thomas

Glenwood Anderson  
 Jewel Anderson  
 Virginia Rice  
 Beratrice Branch  
 Wilbur Browning  
 Evelyn Browning  
 Jeanette Browning  
 \* Not in picture

Louis Bryan  
 Kathryn Cameron  
 Mattie Cannon  
 Devereux Chamberlin  
 Dori Chase  
 Lawrence Chastain  
 Minnie Mae Cheslute

Lucia Bryan  
 Kathryn Cameron  
 Mattie Cannon  
 Devereux Chamberlin  
 Dori Chase  
 Lawrence Chastain  
 Minnie Mae Cheslute

George Diamond  
 Mary C. Dorman  
 Irla Gale  
 Thomas Gullford  
 Eva Hancock  
 Claude Harper

Margaret Harper  
 Elizabeth Harrell  
 Irma Hayes  
 Donovan Hayes  
 Mary Edith Hiers  
 Wilton Hopper  
 Sherod Keene

Joe Kindred  
 Beth Knighton  
 Benjamin Marvick  
 Henry Miller  
 Philip deMontmoulin  
 Carol McGraw  
 Warren McRae

Evelyn McWatters  
 Harold Nielsen  
 LaVerne O'Keefe  
 Mattie Roberts  
 Maude Smith  
 Clifford Sullivan  
 Lucille Thomas



### Sophomore Class (10 B)

VICE-PRES.—Elizabeth Sawyer  
 TREASURER—Robert Nichols

VICE-PRES.—Elizabeth Sawyer  
 TREASURER—Robert Nichols

#### ROLL

Lena Brown  
 Mary Cameron  
 Hayward Farnish  
 Roy Farncloth  
 Mildred Green  
 Junior Harper  
 Ruby Harper  
 Orinda Keene  
 \* Not in picture

Walter Mizell  
 Frank Motte  
 Jean Nesbitt  
 Myrtle Newman  
 Alma Koltowsky  
 Betty Merrill  
 John Nickam  
 Berlice Nizell

Robert Nichol  
 Mona Ogil  
 Billy O'cut  
 Dorcas Parramore  
 Hayward Perfe  
 Evelyn Phinney  
 Kathleen Poutis  
 Elizabeth Sawyer

Ralph Simmons  
 John P. Stanley  
 Gicam Stephens  
 Helen Stephens  
 Forest Streb  
 William Swilley  
 Waudrow Tipton

Elizabeth Townsend  
 William Townsend  
 O's Deane Vickers  
 Thelma Vickers  
 William Walker  
 Chail Watkins  
 Mairiel Wells

Elizabeth West  
 Rebecca Whitthorne  
 Nancy Wilkinson  
 Ruth Williams  
 Herbert Wilson  
 Virginia Wood  
 Tempie Ziegler

Charles Appleby  
Helen Appleby  
Carrie Bell Baker  
Harry Bailey  
Marshall Bailey  
Edwin Brooks  
Leon Brown

Pearle Cheeser  
Florence Conick  
Nellie Mae Douglas  
Gordon Dowda  
Robert Dowda  
Martha Forrest

Mae Gale  
William Gale  
Walter Gilson  
Doris Goddard  
Evon Gorcich  
Micie Ginn

Fred Green  
Harold Green  
Bernice Hancock  
Label Hancock  
Mary Ellen Harkey  
Williard Hines

Helen Hutchinson  
Margaret M. James  
Gary Jenkins  
Jesse Johnson  
Raymond Johnson  
William Kane

Wendin Kelley  
Lois Ladd  
Virginia Lamb  
Lawrence LaMee  
Emma Tandler  
Majorie McGill

George McCall  
Ruth Mizell  
Gertrude Moody  
Clyde Poole  
Mary Sue Robinson  
Mary Walton

**PRESIDENT—Lawrence LaMee**  
**SECTY.-TREAS—Doris Godard**  
**COLORS—Orange and Blue**

**Freshman Class (9 A)**



\* Not in picture.

**ROLL**

**VICE-PRES.—Virginia Lamb**  
**SPONSOR—Myra Ramsey**  
**FLOWER—Hydrangea**



**VICE-PRES.—Joseph Shelley**  
**SPONSOR—Nellie Ellerbe**  
**FLOWER—Hydrangea**

**Freshman Class (9 B)**

**PRESIDENT—Ralph Wilson**  
**SECTY.-TREAS.—Helen Preston**  
**COLORS—Blue and Gold**

**ROLL**

Rose Wexler  
Sue Wexler  
Geraldine Waldron  
Ralph Wilson  
Lorraine Wynn  
Roy Wills

Louis Tarter  
Raymond Tyson  
Luther Tipton  
Evelyn Townsend  
Helen Varnes  
Irene Vermaulen

Theresa Smith  
Jeanette Snyder  
James Spencer  
Barbara Stockwell  
Jack Titchman  
Mary Titchman

Robert Fowell  
Helen Preston  
Junior Reid  
Elsie Sapp  
Mary Sawyer  
Joseph Shelley  
Paul Slaughter

Banice May  
Glenn McGill  
Dorothy McGuire  
Mae Newman  
Lucile Palmron  
Anona Perrin  
George Pound

Herman Guster  
Mildred Gartin  
Mildred Haynes  
Marie King  
Edwin Knox  
Dorothy Marshall  
Geneva Mussey

Vance Arnold  
Reta Beck  
Dora Blackwelder  
Austin Chester  
Mary Custard  
Robert Day  
Driver Eifen

Silhouette

Silhouette



### Eighth Grade (8 A)

PRESIDENT—Julia Rion  
SECRETARY—Annie Lee Harkey

VICE-PRES.—Effie Hogarth  
TREAS.—Phyllis Anderson

SPONSOR—Mrs. T. A. Compton

#### ROLL

Victor Appleby  
Phyllis Anderson\*  
Frederick Bailey  
Ethel Baird  
Elizabeth Baker  
Vivian Black\*  
Guy Barhill

Leo Branch  
Emmett Brown  
McNair Bell  
Wilmer Blake  
Lillian Blount  
Katherine Bohannon  
Pauline Bohannon

Shirley Brown\*  
Donald Cannon  
Louise Cates  
Jerome Dincean  
Carolyn Donaldson  
Edna Enzor  
Nancy Fowler

Onie Gatlin  
Albert Graham  
Rose Marie Graham\*  
Eula Green  
William Guilford  
Maudeline Hancock  
Annie Lee Harkey

Mildred Harter  
Inez Harris  
Effie Hogarth  
Isobel Holding  
Arvilla Hoprich  
Evelyn Kanter  
James Keene

Georgia Kelley  
Willie King\*  
Hugo Kummer  
Sidney McDaniell  
Julia Rion  
Leonard Strange

\* Not in picture.



### Eighth Grade (8 B)

PRESIDENT—Clare Phillips  
SECTY-TREAS.—Ina Sutley

VICE-PRES.—Clifford Pigue  
SPONSOR—Mrs. H. P. Skidmore

#### ROLL

Henry Fearnside  
Robertta Halle  
Gerloma Labruzza  
Adaline Linder  
Frank Mays  
Garland Merchant  
Elna Minton  
Myrtle Minton  
Elsie Mobley

Carroll Moody  
Monteen Motes  
Neil McGill  
Curtis McLendon  
Marguerite O'Farrell  
Marie Oliver  
Ralph Oliver  
Clare Phillips  
Clifford Pigue

Agnes Powell  
Ethel Reynolds  
Thelma Reynolds  
Jeanette Reid  
Cara Revels  
Nancy Ringham  
Robert Roberts  
Ernest Rounton

Louise Robertson  
Margaret Seabett  
Helen Shelley  
Rogers Smith  
Louise Smith  
Ina Sutley  
A. E. Surles  
Eugene Tanner

Quida Thomas  
Ella Tucker  
Dolly Walker  
Pierre Watkins  
Clark Williams  
Emma Willmott  
Dorothy Wilson  
Paul Yeagley



SEVENTH GRADE (7 A)



SEVENTH GRADE (7 B)



SEVENTH GRADE (7 C)

### Seventh Grade (7 A)

PRESIDENT—Mildred Hodges VICE-PRES.—Sally Peebles  
 SECTY.-TREAS.—Lois Walton SPONSOR—Mrs. W. W. Carter

#### ROLL

Bessie Bailey*	Rosalie Cannon	Royce Hood	David Price
Walter Baird	David Collins*	Faye Johannesen	Clyde Rich
Lois Barket	George Crews	Lois Keene	Florence Smith
Camille Billiter	Maude Erikson*	Vernon McClaran	Jack Southall
Nedra Brantley	Mary Fearnside	Isabel McGraw	Lois Walton
Johnie Brooks	Ferne Gatlin	Sally Peebles	Ralph Warner
Nellie Burt	Raymond Hines	Vivian Prevatt	Joe Wilkinson
John Calhoun	Mildred Hodges	Daniel Price	

### Seventh Grade (7 B)

PRESIDENT—Marshall Spencer VICE-PRES.—Janice Sapp  
 SECTY.-TREAS.—Joe Wexler SPONSOR—Mamie Davis

#### ROLL

Stanley Brunner	Joe Lamb	Jeanette Mullis	Thelma Smith
Warren Buck	Ivan Hudson	Elizabeth Marvick	Myrtle Stockton
Evilyn Cooper	Marguerite Hoprich	Mildred Moody	Jesse Terry
Elizabeth Cameron	Neal Hutchins	James Phinney	Duncan Townsend
Sadie Lee Chester	Pete Hagan	Lewis Perry	Vivian Vickers
Dorothy Dinger	Wayne Hart*	Joan Ross	David Whitten*
Betty Sue Fitzgerald	Truman King	Marshall Spencer	R. C. Woolwine
Winifred Grooms	Barney Kukowsky	Louis Smith	Joe Wexler
Hubert Howell	Ilean Lawrence*	Janice Sapp	Edith Williams
Kathie Hines			

### Seventh Grade (7 C)

PRESIDENT—Hazel Livingston VICE-PRES.—Richard Kepler  
 SECRETARY—Sue Marvick TREASURER—Sibyl Newman

SPONSOR—Frances Baker

#### ROLL

Franklin Beagle	Richard Kepler	Hazel Livingston	Betty Snyder
Franklin Beagle	Erving Felt	Sue Marvick	Grace Sullivan
Marshall Bennett	J. C. Farnick	Harridge McIntosh	Harriet Tenney
Gale Billie	Toy Hall	Eliot Newman	Valery Thomas
J. C. Bohannon	Hattie Howans	Ronald Outlaw	Aldena Walker
Pauline Brown	Irene Johns	Elbert Parramore	Wilma Thigard*
Thelma Carter	Illa Johnson	Dorothy Palfrick	Nunnie Ward
Orae Brown*	LaVerne Kane	Anna Grace Sonnett	Helen Willmott
Clara Darben			

\* Not in picture



B AND S



AGAIN!



THE KITTENS' WILDCATS' LATER



COOKS NOT CROOKS



READY TO GO



YOU NAUGHTY KITTENS.



PHYSICAL EDUCATION

THE Silhouette 1930



BAD MEN



HELEN OF TROY SERIOUS THOUGHTS



HAND PICKED



TWO LITTLE MAIDS



THE HAT ONE, TOO



NATURAL! THE PENEL CROWDS HERE



TWO'S COMPANY

Silhouette

## Silhouette Staff

EDITOR-IN-CHIEF .....	Hollyday Hudgins
BUSINESS MANAGER .....	Mary Brown
ASSISTANT BUSINESS MANAGER .....	J. B. Davis
ART EDITOR .....	Clyde Miller
ASSISTANT ART EDITOR .....	Linnell Wells
ATHLETICS (Boys) .....	Shaw Buck Marvin Watson
ATHLETICS (Girls) .....	Peggy Haile
JOKES .....	Lillian Meigs
CIRCULATION MANAGER .....	Edith Nielsen
FEATURES .....	Frances Whitthorne Virginia Stanton

## Class Representatives

JUNIOR CLASS .....	Walter Fowler
SOPHOMORE CLASS	
A Section .....	Evelyn McWatters
B Section .....	William Townsend
FRESHMAN CLASS	
A Section .....	Jesse Johnson
B Section .....	Lorraine Winn
EIGHTH GRADE (Sections A & B) .....	Elsie Mobley
SEVENTH GRADE (Sections A, B, & C) .....	David Price
FACULTY ADVISOR .....	W. W. Carter



STAFF MEMBERS

## Pi Epsilon Club



Frances Baker  
Mary Brown  
Minna Buttriss  
Sara Margaret Gross  
Peggy Haile  
Gracia Knighton

Lillian Meigs  
Evelyn Miller  
Evelyn Rion  
Lu Gene Rice  
Virginia Stanton  
Frances Whitthorne

### COLORS

Red and White

### MOTTO

Eat, Drink, and Be Merry

### OFFICERS

Pres.—Evelyn Miller

Sec'y-Treas.—Sara Margaret Gross

Reporter—Lu Gene Rice

### ACTIVITIES

Initiations-January

Club Meetings

Easter Dance

Baseball Dance in Honor of

Champion Team of 1929, Apr. 4

Fashion Walk-Howell Theatre, April

## ATHLETICS



# FOOTBALL



CLYDE MILLER  
50

Silhouette  
1930





FOOTBALL SQUAD



E. F. Gunn  
Coach

### The Squad

John Millican  
George Minton  
George Diamond  
Walter Fowler  
William Kane  
Jack Blake  
Shaw Buck  
Hollyday Hudgins  
Henry Hutchinson  
Joe Kindred  
Tom Mobley  
James Murphy  
Albert Walton  
Clyde Miller

John Warren Tilghman  
Harold Nielsen  
Marvin Watson  
Benjamin Marvick  
Jesse Johnson  
Hubert Hiers  
Grady Fowler  
E. F. Gunn, Coach  
Byard Respass  
Devercaux Chamberlin  
John Paul Stanley  
John Berry Davis  
Walter Enzor  
Claude Hogeboom



YEAR LEADERS

Mary Brown

Robert Nichols



Walter Fowler, Manager



SHAW BUCK  
*Captain*

(All Conference Quarterback)

The Wonder Man in Putnam High School athletics for four years. Affectionately known as "Jeter".



GEORGE MINTON  
*Alternate Captain*

"Greasy" was All Conference Tackle; the biggest man on the team, and a brilliant and consistent performer.



HOLLYDAY HUGGINS

Honorable mention all Conference Halfback. "Holly" certainly could go through the line.



CLYDE MILLER  
*End*

A man who had no previous experience, but who showed plenty of stuff.



JOHN MILLIGAN  
*Halfback*

The fastest man on the team. John should go a long way next year.

THE  
**Silhouette**  
1930



HUBERT HIERS  
*Halfback*

"Hubert" was halfback, expert pass receiver, and an artist at end runs.



HAROLD NIELSEN  
*Tackle*

"Foots", good natured, but a regular wrecking machine when attacking the other side.



JACK BLAKE  
*Lineman*, who stopped many a play directed at his side of the line.



JOHN B. DAVIS  
*End*

"Red", though small in size proved himself to be great in sheer nerve, spirit, and ability.



TOM MOBLEY  
*Tackle*

A tackle of merit though a substitute.

THE  
**Silhouette**  
1930



**ALBERT WALTON**  
*Halfback*  
Handicapped by size, yet hard as nails, "Al" always did the job right.



**GRADY FOWLER**  
*Fullback*  
"Nosedive"—a hard driving member and a "wow" on backing up the line.



**JOHN TILGHMAN**  
*Fullback*  
"Tubby" should come into his own as a punter and line plunger. Watch him.



**CLAUDE HOGEBOOM**  
*Quarterback*  
His first year out, but he showed a lot of stuff.



**FRED WARD**  
*Guard*  
A defensive man who always broke through and got his man.



**HENRY HUTCHINSON**  
*Fullback*  
Can boot the ball as well as back the line. "Duke" is our "Romeo".



**GEORGE DIAMOND**  
*Guard*  
"Bulldog" lived up to his name. Like the mounted police, he always got his man.



**JAMES MURPHY**  
*End*  
With no previous football experience, "Jimmy" made competition hot for the other ends.



**JOE KINDRED**  
*End*  
One of the hardest workers on the team, and always a consistent player. He liked it.



**CLAUDE HOGEBOOM**  
*Quarterback*  
A job who was always ready and never afraid to mix it.



**FRED WARD**  
*Guard*  
This is the first four back that was a tower of strength at every center and also a wonderful pass receiver.



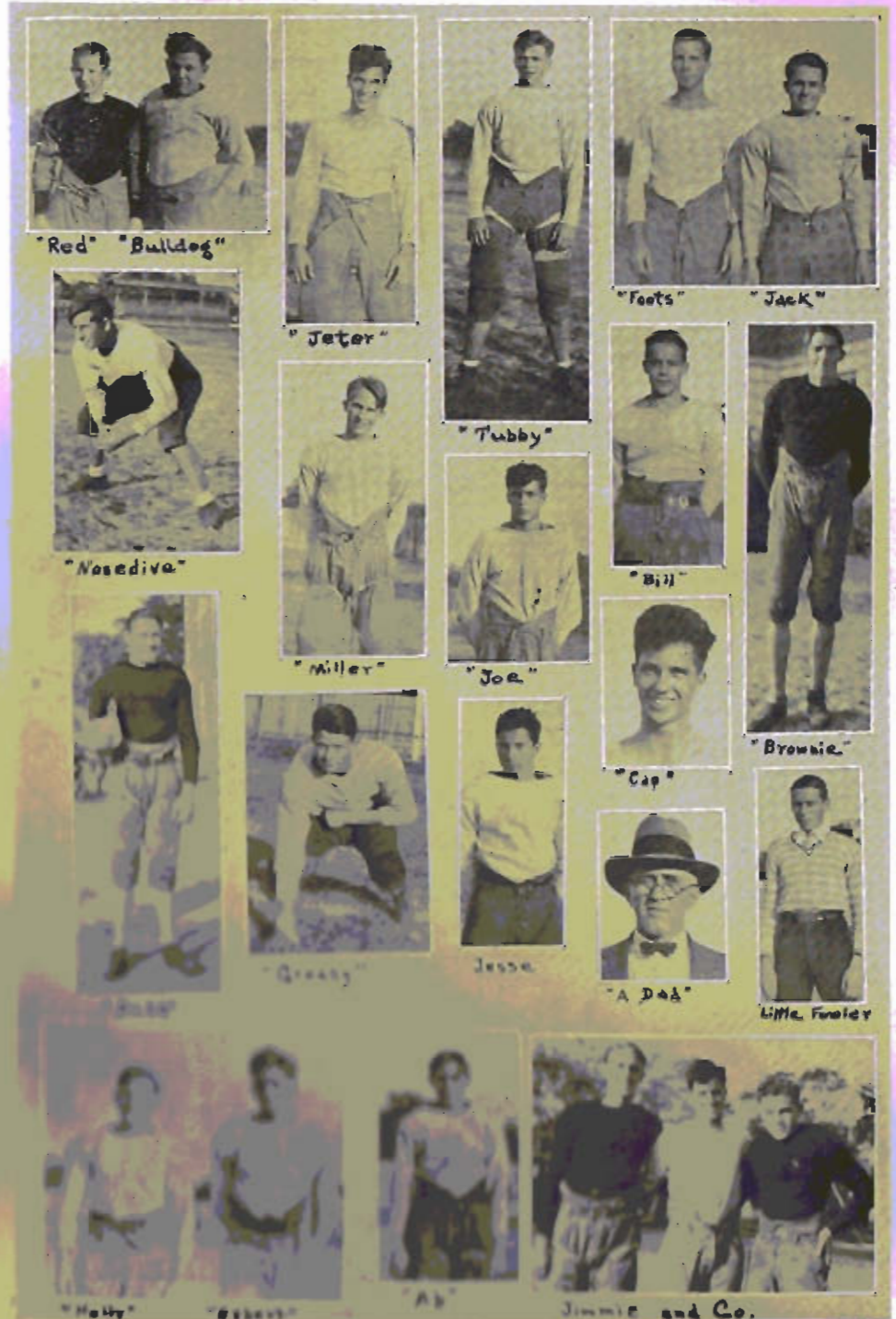
**WALTER ENEOR**  
*Center*  
"Hamp" is a safe bet. Put your money on him.

## Football Record

Palatka 19	— St. Augustine	9
Palatka 46	— Fernandina	0
Palatka 0	— Deland	20
Palatka 6	— New Smyrna	6
Palatka 0	— Leesburg	35
Palatka 25	— St. Josephs'	0
Palatka 13	— Daytona	7
Palatka 13	— Gainesville	12

"Shorty" Gunn  
Coach

"Shorty" was a former Florida star lineman. He proved to be as good a coach as he was a player. Always popular with the boys, he had their confidence and could get hard work out of them. He was a builder of morale and spirit as well of football teams.





EVELYN  
SPECIAL  
DELIVERY



SOME COOKS



COOKIES



PHYSICAL EDUCATION



MARGARET AND  
A FRIEND



BABY JUNIORS



PHYSICAL EDUCATION



PEGGY AT  
MISS PALATKA

THE  
**Silhouette**  
1930

# BASKETBALL



THE  
**Silhouette**  
1930



GIRLS' BASKETBALL SQUAD

## The Squad

Mary Brown  
 Peggy Halle  
 Elizabeth Sawyer  
 Audrey Hogeboom  
 Rebecca Whitthorne  
 Doris Chase  
 Frances Whitthorne  
 Mary E. Hiers

Emily Hutt /  
 Nancy Wilkinson  
 Catherine Cannon  
 Ruth Williams  
 Mattie Roberts  
 Virginia Stanton  
 Gertrude Moody  
 Evelyn Rien

Marcia Kepler



NELLIE KILLEBUCK  
*Coach*



NIELSEN AND MILLER  
*Yell Leaders*

## Record

Wildcats .. 21	-	DeLand .....	42
Wildcats .. 10	-	St. Augustine .....	26
Wildcats .. 44	-	St. Joseph .....	1
Wildcats .. 19	-	St. Augustine .....	54
Wildcats .. 24	-	DeLand .....	10
Wildcats .. 11	-	St. Joseph .....	14
Wildcats .. 34	-	Andrew Jackson .....	18
Wildcats .. 27	-	Robert E. Lee .....	17
Wildcats .. 14	-	Crosscut City .....	11
Wildcats .. 17	-	Andrew Jackson .....	17
Wildcats .. 28	-	Ocala .....	20
Wildcats .. 30	-	Daytona .....	8
Wildcats .. 38	-	Hastings .....	21
Wildcats ..	-	Green Cove Springs .....	21
Wildcats .. 33	-	Robert E. Lee .....	10
Wildcats .. 28	-	Starke .....	24
Wildcats .. 15	-	Green Cove Springs .....	15
Wildcats .. 15	-	Daytona .....	28
Wildcats .. 15	-	Glennville (Ga. State Champs) .....	28



MARCIA KEPLER  
*Marcell*



FRANCES WHITTHORN  
*Forward*

"Frankce", our *lefty* was one fine forward and she never failed to find the basket.



MARY BROWN  
*Captain*

Basketball is a serious business with Captain Brown and she is one of the best *guards* known to girls' Basketball.



MATTIE ROBERTS  
*Guard*

"And lo! A new star appeared". It was Mattie. We predict that she will make a mighty fine Guard next year.



EMILY HUTT  
*Forward*

"Emmie" can certainly shoot baskets and will continue to shoot for Putnam High one more year.



AUDREY HOGEBOOM  
*Running Center*  
Audrey could *fight* when she wanted to—and she wanted to.



DORIS CHASE  
*Guard*

This was Doris' first year, but she accomplished a lot for the Wild-cats.



VIRGINIA STANTON  
*Guard*

"Sister" did some wonderful guarding this year—and How! A worthy pal of Mary's.



PEGGY HAILE  
*Forward*  
and  
*Running Center*

"Peppy" was the most versatile player on the squad. She performed equally well at forward or running center.



GERTRUDE MOODY  
*Jumping Center*

Gertrude is only a freshman; so just watch her go in the future. A mighty fine center.



MARY E. HIERS  
*Guard*

Mary Edith was a regular wildcat, fighting, scrapping all the game.



BOYS' BASKETBALL SQUAD

Silhouette  
1930

## The Squad

E. F. GUNN, Coach

Tom Mobley  
Grady Fowler  
Marvin Watson  
James Murphy  
Shaw Buck

Claude Hogeboom  
John Paul Stanley  
Walter Fowler  
George Minton  
Claude Harper

Bill Walker



GEORGE MINTON  
*Guard*  
Captain

Greasy, big and husky, was the downfall of many an ambitious forward. A fine captain.

## Record

Maroons	13	- - -	DeLand	14
Maroons	20	- - -	Gulf Life	27
Maroons	18	- - -	Crescent City	13
Maroons	27	- - -	Ocala	20
Maroons	19	- - -	Gainesville	24
Maroons	27	- - -	St. Joseph's	23
Maroons	18	- - -	Gulf Life	27
Maroons	8	- - -	Gainesville	17
Maroons	7	- - -	Daytona	46
Maroons	24	- - -	Crescent City	17
Maroons	21	- - -	Ocala	23
Maroons	33	- - -	St. Joseph's	14
Maroons	23	- - -	St. Augustine	26
Maroons	17	- - -	Cobles	47
Maroons	23	- - -	DeLand	17
Maroons	18	- - -	Cobles	43
Maroons	13	- - -	Daytona	27
Maroons	22	- - -	St. Augustine	24

## TOURNAMENT

Maroons	34	- - -	Baldwin	11
Maroons	12	- - -	Lee	47



MARVIN WATSON  
*Manager*

Capable and efficient and always looking after the boys' every need.

Silhouette  
1930





SHAW BUCK  
*Guard*

"Pelham" was always a fine defensive player. He blossomed out on offensive this year and thrilled the crowd with many a spectacular shot.



JIMMY MURPHY  
"Maud"  
*Forward*

Jimmy was the high point man of the team in the tournament. On that occasion, he performed the difficult feat of scoring twenty-seven points in a single game.



WALTER FOWLER  
"Runt"  
*Forward*

Lacks nothing but size, but maybe he will grow.



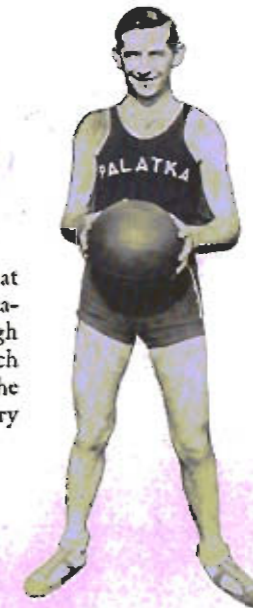
CLAUDE HARPER  
"Stubby"  
*Forward*

Claude is a good shot and an excellent floor player. If he will ever grow up, he will be hard to stop.



TOM MOBLEY  
"Stretch"  
*Center*

This man proved what hard work and application can do. Although he had not had much previous experience, he made the team a very fine center.



GRADY FOWLER  
"Nosedive"  
*Center*

Grady, though new to basketball, always made a mighty fine substitute center.



CLAUDE HOGEBOOM  
"Sure Shot"  
*Forward*

Claude is a mighty fine shot and with a little more experience will make a great player. Watch him next year.



JOHN STANLEY  
"Lefty"  
*Guard*

"Lefty" is only a sophomore. Before he graduates, he will have made a name for himself.



BASEBALL SQUAD

Silhouette  
1930



"SHORTY" GUNN  
Coach

BASEBALL SQUAD

Shaw Buck  
Grady Fowler  
Claude Hogeboom  
Walter Enzor  
John Berry Davis  
Joe Kindred  
Walter Fowler  
(Manager)

Hubert Hiers  
J. P. Stanley  
Clyde Miller  
Robert Nichols  
James Murphy  
Benjamin Marvick  
E. F. Gunn  
(Coach)



SHAW BUCK  
Captain



WALTER FOWLER  
Manager

Silhouette  
1930



GRADY FOWLER  
*Catcher*



CLYDE MILLER  
*Center Field*



HUBERT HIERS  
*1st Base*



CLAUDE HODGEBROOM  
*Pitcher*



JOHN BERRY DAVIS  
*Left Field*

THE  
**Silhouette**  
1930



ROBERT NICHOLS  
*2nd Base*



JOHN P. STANLEY  
*Pitcher*



WALTER ENZOR  
*Pitcher*



JAMES MURPHY  
*3rd Base*



BENJAMIN MARVICK  
*Right Field*



JOE KINDRED  
*Utility*

THE  
**Silhouette**  
1930



**1930 Track Team**

Hubert Hiers, Wayne Green, John Millican, Skeet Watson, *Manager*,  
Sergt. Hutchinson, *Assisting H. S. Coach*

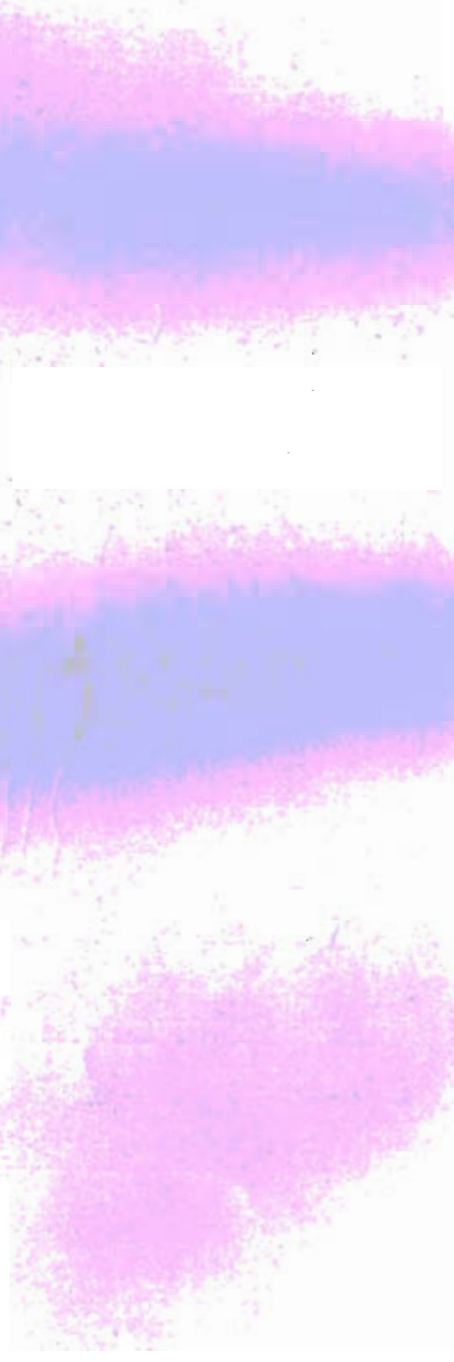


# FEATURES



SPANISH PLAY

Silhouette  
1930





BOBBY AND NANCY  
JUNIOR MASCOTS



MRS JONES AND HER  
WESTERN FRIENDS



IT'S  
SURE  
FUNNY



VERY BAD MEN



OVERREACHING



'HOOKEY' HAS TWO HOOKED



ALL FIXED UP



MARJORIE AND DORIS

THE  
Silhouette  
1930



SENIOR PLAY  
"TEA TOPER TAVERN"

Silhouette



SWEET MARIE



MISS ROWE



SMILES



DUKE



MISS ELLERBE



DORIS



MISS JONES



MARJORIE



O.K. GIRLS



LUCKY JOHN



JUNIOR PLAY  
50 - 50



MISS MCGILL  
"OUR CITY LIBRARIAN"



THEATRICALS



EDITH AND  
JACK



WALTER  
"ALL FIXED UP"



MR. HOGARTH, THE  
"MAN WHO KEEPS US CLEAN"



"HAPPINESS"



"A CO-ED"



"ANOTHER"

## Aunt Lucia

This college comedy was put on during the last week of January and the attendance both on Thursday and Friday nights broke all previous records. It was sponsored by the Annual Staff and was a great success financially and otherwise.

The cast was composed of students, teachers and a number of persons outside of school. The chorus of high school girls presented a galaxy of beauty and charm. The baby pageant in charge of Miss Nellie Ellerbe was indeed very beautiful. One of the special features which went over big was the "Flapper Chorus" in which many of the leading business men of Palatka starred.

### THE CAST

Jerry (Fake Aunt)	H. K. Hooks, Jr.
George (Fraternity Brother)	Franklin Hudgins
Dick (Football Player)	Tommy Preston
Betsy (George's Girl)	Frances Williams
Molly (Dick's Girl)	Eleanor Houston
Ethelyn (Jerry's Girl)	Peggy Haile
Prof. Gaddis (Eccentric Bachelor)	Harrison Hickenlooper
Dean Howard (Old Maid)	Mrs. Hennie Lou Bell
Big Butter and Eggs Man from Omaha	Henry Neilsen
Mr. Collins (Dick's Father)	"Slim" Hardenburg
President Seamore	Prof. H. P. Skidmore
Mrs. Seamore	Miss Louella Rouse
Freshmen	Skeet Watson and Clyde Miller
Fraternity President	Hollyday Hudgins

### THE CHORUS

Mayme Watson	Audrey Hogeboom
Frankee Whitthorne	Allie King
Emily Hutt	Doris Thomas
Mattie Roberts	Mabel Thomas
Becky Whitthorne	Pinky Harrell
Elizabeth Sawyer	Evelyn McWatters
Mary Edith Hiers	Catherine Cannon
Peggy Haile	Jeanette Browning
Katherine Cameron	Nancy Wilkinson
Marjorie Carter	Emily Campbell

Jessie Conway, Pianist



## Jokes

### HIGH-HANDED METHODS

"Listen, Mr. Allen", cried a young senior from Chicago, "There is no use in trying to get away. I've got you covered and you might as well give me an A Grade."

Jeanette: "What would you do if you found two bits in your pocket?"  
Hubert: "I would know I had on another boy's trousers."

Frankee: "How did you like the Spanish Play this morning?"  
Mary: "Just fine. It was exactly like a Grand Opera. I couldn't understand a word of it."

Greasy was telling an innocent little girl friend about his football experience. He used terms which she did not understand. When Greasy mentioned a *halfback*, she thought he meant a last season's bathing suit. When he spoke of kicking *goals*, she thought he referred to a mode of punishing grave robbers. When he told her he intended to go out for *tackle* in college, she told him she was not one bit interested in fishing.

Dan: "Did you make these biscuits with your own hands, honey?"  
Alene: "Yes; why?"  
Dan: "I just wondered who helped you lift them out of the oven."

Edith Neilson: "Is my face dirty, or is it my imagination?"  
Hollyday: "Your face isn't, but I don't know about your imagination."

Clyde: "Am I the first man you ever loved?"  
Peggy: "Are you trying to kid me or insult me?"

The following is a quotation from a freshman composition, "Just then Coach Gunn reached over and filled his fountain pen from the Black Sea."

### A SHORT, SHORT STORY

Jimmy asked. Mary refused. Jimmy begged. Mary blushed. Jimmy argued. Mary hesitated. Jimmy insisted. Mary resisted. Jimmy tried. Mary surrendered. So little Jimmy after all carried Mary's books home from school.

THE  
Silhouette  
1930

## Autographs

Name

Address

Catherine Conner 1304 Laurel St. Palatka, Ill.

Silhouette  
1930

Autographs

Name

Address

Ruby Harper	Palatka - Florida
Johnnie Browning	E. Palatka - Florida
Emily Campbell	Palatka, Fla.
Margaret Hunt	
Charles Appleby <sup>PHOTO</sup>	Palatka Florida
"Pinker" Hance	Palatka, Florida
Betty Cannon	Glenville, Ga.
Minnie Mae Chesire	East Palatka, Fla.



Heels whistle brushes:  
 Down's life on the  
 side lines - I love you like I  
 love salt on my desert

"Matti"

Hey Lizzie  
 Allen

I mitcha'  
 I letcha'  
 see never forgetcha'  
 "I got  
 Pinks"

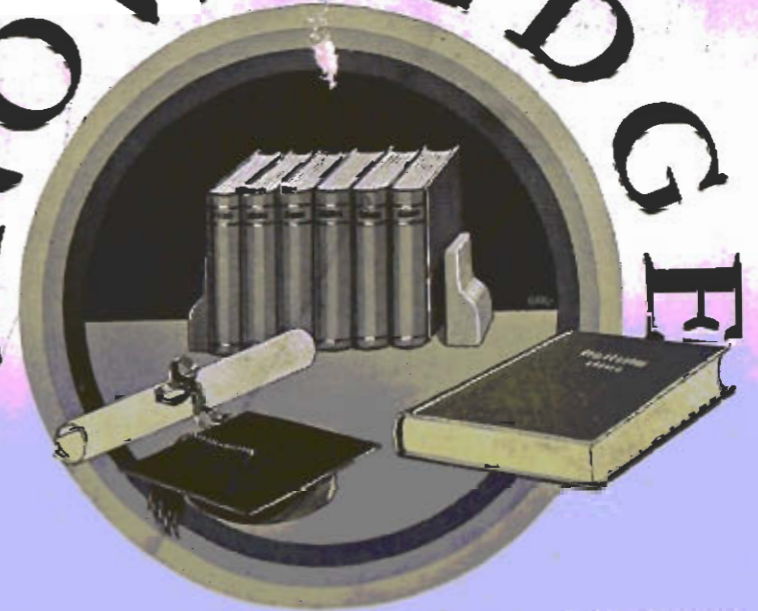
ADZ.

... a piece of life  
 have ever

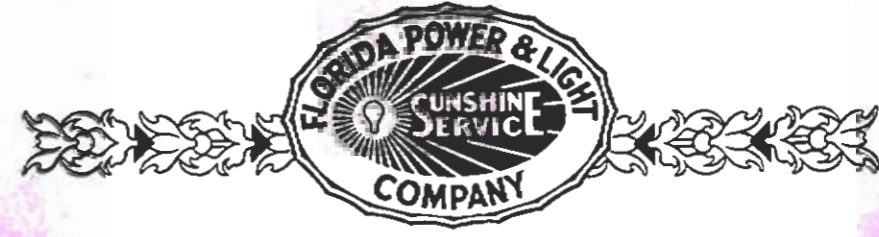
Dear Betty,  
 I hope you are well  
 at this time. I have  
 been thinking about you  
 and how much I love you.  
 I hope you are happy  
 and that you are  
 always smiling. I hope  
 you are always with  
 me. I love you very  
 much. I hope you are  
 always with me. I love  
 you very much. I hope  
 you are always with me.  
 I love you very much.  
 Red Cannon

Dearest Elizabeth  
 It is indeed a pleasure to be  
 allowed to write in your book - I'm enjoy  
 knowing you + Jeanette, lots and when  
 I'm gone don't forget me always  
 Love Betty Cannon

# KNOWLEDGE



You who are graduating have acquired the fundamental knowledge for serving in some particular capacity or in some chosen vocation. Many of you are going to become business men of Florida with ever-increasing problems and responsibilities as your specific knowledge increases. In our own organization are many trained minds guided by broad and varied experience. These men and women and the equipment they direct are ready to serve you at all times and will assist you in solving every problem you may have pertaining to the utilization of our services. . .



# **Putnam National Bank**

Over one Third Century of Constructive  
Banking Service

TOTAL RESOURCES  
\$2,850,000.00

---

## **KENNERLY HARDWARE CO.**

A STORE OF MANY ITEMS

---

Ask Your Grocer For .....

**OVER SEA BRAND**

Food Products

— OVER 200 KINDS —

**LEWIS-CHITTY**

CONSOLIDATED

Palatka, Florida

*Wilson  
Cypress Company*

*Palatka, Florida*

Heartiest Congratulations

## HASTINGS POTATO GROWERS' ASSOCIATION

Cooperation Brings Prosperity and Independence

## THE PALATKA DAILY NEWS

"A Constructive Newspaper Sponsoring Clean Sports and Good Schools."

Fifteen Cents a Week by Carrier

PHONE 195

## SOUTHERN POTATO PRODUCTS CO.

Canners of  
ZACATE BRAND

### NEW IRISH POTATOES

General Offices — Merryday Building, Palatka, Fla.

READY TO SERVE

"Just Heat 'Em and Eat 'Em"

PALATKA, FLORIDA

Always

VITAPHONE



MOVIETONE

Good Entertainment

Compliments of

## COCA-COLA BOTTLING COMPANY

Drink *Coca-Cola* in Bottles

Compliments of

### W. A. MERRYDAY CO.

Hay, Grain, Feed, Fertilizer,  
and Crate Material

Established 1886

PALATKA, FLA.

### FRATERNITY, COLLEGE AND CLASS JEWELRY

Commencement, Announcements  
and Invitations

Jewelry to the Junior Class  
Stationery to the Senior Class  
of Putnam High School

### L. G. BALFOUR CO.

Manufacturing Jewellery and Stationers  
ATTLEBORO, MASS.

We Carry a Complete  
Line of

Class Pins and Rings

## UNDERWOOD

324 Lemon St.

Phone 389

## SANITARY STEAM LAUNDRY

We Have a Service For Your  
Every Need

603 Reid Street

Phone 145

## GROSS' PHARMCY

THE PRESCRIPTION STORE

SCHOOL SUPPLIES

Telephone 640

Palatka, Fla.

**J. M. Pounds Company**

Candies, Cold Drinks,  
Office Supplies,  
Stationery, News Stand,  
**Kodak Finishing.**

330 Lemon Street Phone 1685

**Reynolds Flower Shop**

Flowers For All Occasions  
We Telephone Flowers

Residence 2811 Phone 90

**W. G. GUNN**

**AUTO BODY**

**REPAIR AND PAINT SHOP**

**Romines Chevrolet Co.**

"A Six in the Price  
Range of a Four."

Ladies' and Children's

Up to Date Wear

**TAVEL'S**

N. 3rd Street Shop

**Master's Quality Market**

Western and Native Meats  
Fruits and Vegetables  
WE DELIVER

326 Lemon Street Phone 42

**Merrill Insurance Agency**

INCORPORATED

FIRE, LIFE, HEALTH,  
ACCIDENT AND AUTOMOBILE

Phone 11 307 Lemon St.

**Browning-Fearnside Co.**

"A Good Clothing Store"

**PHONE 390**

QUALITY - STYLE - SERVICE

**Nu Grape Bottling Co.**

Manufacturers of  
Carbonated Beverages

**PHONE 695-J**

119 S. 13th Street

Complete Service of

**Modern Cleaners and Dyers**

C. R. KEMP, Prop.

Phone 611 419 N. 11th St.

Congratulations and  
Best Wishes

To the Class of 1930

**FEARNSIDE'S FLOWERS**

A Complete Florist Service

**J. H. HAUGHTON**

**City Drug Store**

318 Lemon St. Phone 77

Drink Genuine NEHI

IN All Flavors

Spend NEHI Crowns Like Money

**NEHI BOTTLING CO.**

**Bailey's Dry Cleaning**

617 Lemon Street

CLEANING AND PRESSING

**PHONE 296-J**

**SPENCER'S**

Everything Electrical

**RADIO'S**

**-PHONOGRAPH RECORDS**

We appreciate your coming to our store

**E. H. WEDGE**

Photographer

Palatka, Fla.

Compliments of  
**T. J. Barnett Foundry and  
Engineering Company**  
Palatka, Florida

**Court Square Drug Co.**  
A DRUG STORE  
—Where Your Smallest Want Receives  
COMPETENT ATTENTION

**ALBERT N. MARVICK**  
Construction  
BETTER BUILDING  
A former student of  
PUTNAM HIGH SCHOOL

Compliments of  
**Southern Insurance Agency**  
J. WALTER HILLIARD, Manager  
Palatka, Florida

Compliments of—

**JAMES R. MELLON**

—To Class of 1930

Our Heartiest Congratulations  
**THE PALATKA ATLANTIC NATIONAL BANK**  
PALATKA, FLORIDA

A Nation-Wide Corporation

**J. C. PENNY COMPANY, INC.**

Dry Goods, Ready-to-Wear, Clothing, Furnishings and Shoes

**T. J. Barnett Company**  
Builders of Ice Plants  
Palatka, Florida

Compliments of  
**G. M. ZEAGLER, M. D.**

**W. J. BANKS AND COMPANY**  
Builders and Contractors  
PALATKA, FLORIDA

WE APPRECIATE OUR ADVERTISERS

**SOUTHERN VENEER COMPANY**  
Commercial Veneers

PALATKA,

FLORIDA

<p>Palatka Candy Company Wholesale Confections</p>	<p>Yelverton Furniture Co. Palatka, Fla.</p>
<p>Fearnside Clothing Co. "Quality Corner"</p>	<p><b>THE TIMES-HERALD</b> Putnam County's Old and Reliable Newspaper H. S. McKENZIE, Editor</p>
<p>Compliments of Palatka Tie Company</p>	<p>Compliments of <b>J. C. CALHOUN</b> To the Class of 1930</p>
<p>We Thank Our Supporters and Boosters. —The Staff</p>	<p>Compliments of <b>T. B. GILLESPIE</b> To the Class of 1930</p>
<p>Compliments of <b>MULLIS BROTHERS INC.</b> Manufacturers of <b>QUALITY MILL WORK</b> Jobbers in Windows and Doors PALATKA, FLORIDA</p>	<p>Compliments of <b>The Davis Beauty Parlor</b> Painless Permanent Waving</p>

<p><b>C. H. KENNERLY</b> County Judge</p>	<p><b>W. CARL DAVIS</b></p>
<p><b>W. A. WILLIAMSON</b></p>	<p>Compliments of <b>Southern Products Co.</b> Manufacturers High Grade Spanish Moss Hair PALATKA, FLORIDA</p>
<p>When most of us go fishing, it's a vacation. But when Alton Brown goes fishing, it's a vocation. Therefore "va" means play and "vo" means work.</p>	<p><b>P. M. HAGAN</b> Sheriff</p>
<p>Compliments of <b>PARKVIEW HOSPITAL</b> DR. W. S. MILLER</p>	<p>Dr. D. Y. Roseborough</p>
<p>Miss Jones (Spanish Class)—The plot thickens. We have two women and one man. (To Evelyn Miller)—How is this story going to end? Evelyn—One of them is going to get him.</p> <p>Miss Rouse is a Home Economics teacher and she sure knows her onions.</p>	



THIS BOOK PRINTED BY  
COLUMBUS OFFICE SUPPLY COMPANY  
COLUMBUS, GEORGIA

