

The
Mellon
Patch
'52





The 1952
MELLON PATCH
BY THE SENIOR CLASS
PUTNAM HIGH SCHOOL

Dedication



To you, Mr. Osterberg—

Because you have been our teacher and our guide throughout our high school days, bringing us safely through equations and square roots, through circles and triangles and polygons...

Because you have taught us at least a little about math and a great deal more about life, praising us when we deserved praise and lecturing us when we needed a lecture, and setting an example for us day by day by your patience and kindness and unfailing smile... and, lastly,

Because you have been not only our teacher, but our friend—

To you we sincerely dedicate this annual.

CONTENTS

FACULTY

SENIORS

JUNIORS

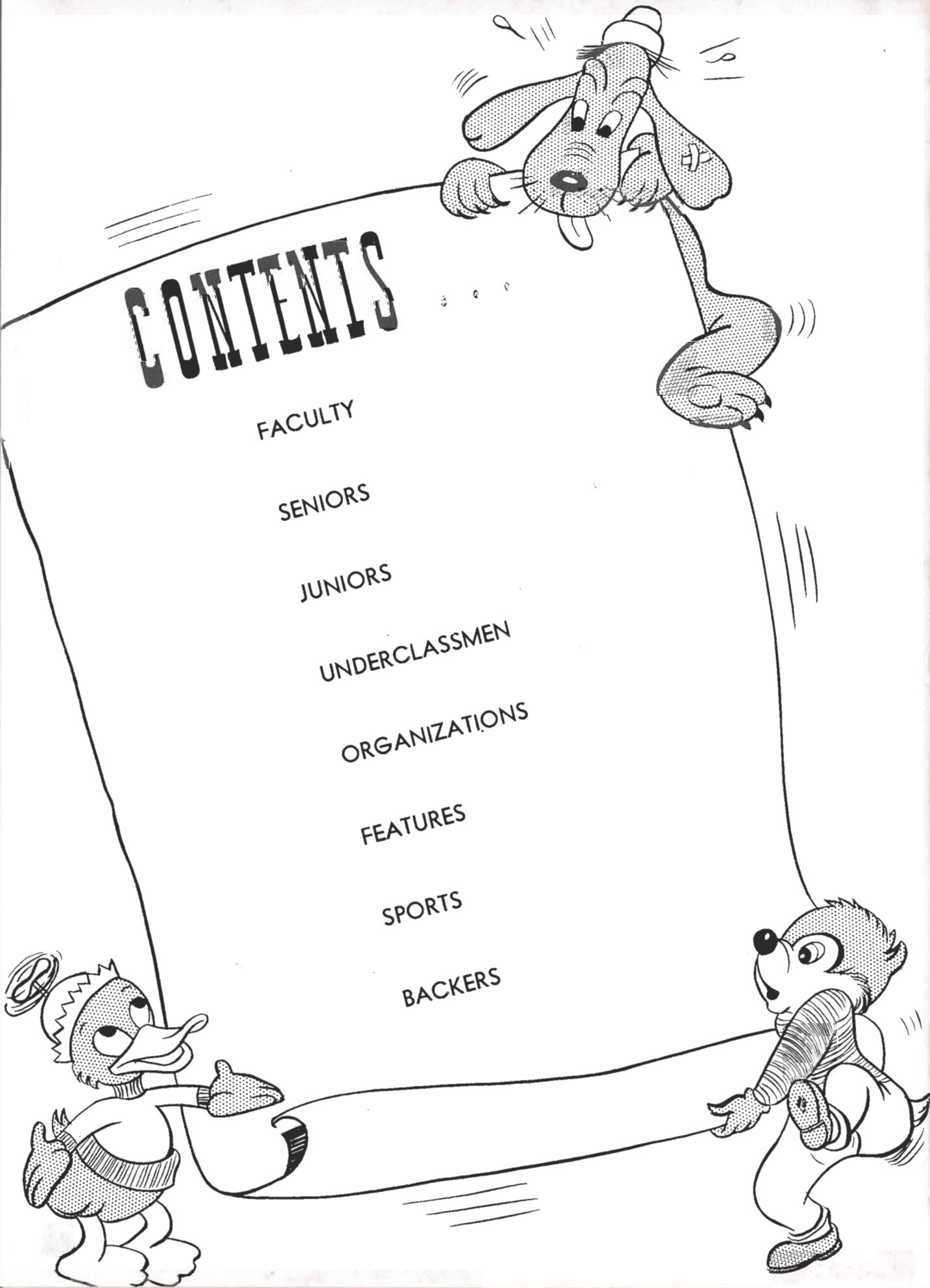
UNDERCLASSMEN

ORGANIZATIONS

FEATURES

SPORTS

BACKERS



IN MEMORIAM

*She has outsoared the shadow of our night,
Envy and calumny and hate and pain,
And that unrest which men miscall delight,
Can touch her not and torture not again;
From the contagion of the world's slow stain
She is secure, and now can never mourn
A heart grown cold, a head grown gray in vain;
Nor, when the spirit's self has ceased to burn,
With sparkless ashes load an unlamented urn.*

*She lives, she wakes—'tis Death is dead, not she;
Mourn not for Annette—Thou young Dawn,
Turn all thy dew to splendour, for from thee
The spirit thou lamentest is not gone;
Ye —caverns and ye forests, cease to moan!
Cease, ye faint flowers and fountains, and thou Air,
Which like a mourning veil thy scarf hadst thrown
O'er the abandoned Earth, now leave it bare
Even to the joyous stars which smile on its despair!*

ADONAIS by Shelley



FACULTY

JEROME F. EASTHAM
B.A., M.A.; Berea College,
George Peabody College,
University of Florida, Chicago
University.
Supervising Principal.



WILLIAM M. THOMAS
S.S.A., Master of Agriculture;
University of Florida.
County Superintendent



HUBERT RODINSON
A.B., M.A.; Berea College,
University of Kentucky.
History.

GUSTAV C. ADAMS
B.A., M.A., B.S., L.S.;
Stetson University, Columbia
University.
Librarian.

MARIAN P. AUSTIN
M.Ed., B.A., R.N.; St.
Luke's Hospital, Florida
State University, George Pea-
body College.
Latin I, II, English.

RAY BLAZER
A.B.; St. Petersburg Junior
College, Stetson University.
*World History, Geography,
Social Studies.*



MARY ELIZABETH BOYD
B.A., C.S.; University of
Florida.
Civics, Speech.

NELLIE E. BRYAN
B.A.; Winthrop College.
Science.

MADGE W. BUTLER
B.A.; Certificate of Expres-
sion, Western Maryland
College.
Science.

JOSEPHINE W. CARTER
B.A. in Ed.; Florida State
University, Columbia Uni-
versity.
English.

Mrs. W. W. CARTER
B.A.; Indiana Cent. Norm.
Coll., Univ. of Tenn., Indi-
ana Univ., Univ. of Fla.

OWEN CHASTAIN
B.A. in Ed.; Univ. of Fla.
Spanish and History.

Mrs. W. M. ELLIOTT
A.B.; Fla. State University.
English.

MRS. SARAH ELROD
B.S.; Middle Tenn. State
College.
English and Business English



JAMES M. ELROD
B.S., M.A.; Middle Tenn.
College, George Pea-
body College.
Science.

MARY VIRGINIA FARRAR
B.A.; Tenn. College, Jackson
Business, University of Nash-
ville, Bowling Green Bns. U.
Commercial Courses.

ROBERT P. MACDONOUGH
B.S.; Stetson University.
Physical Ed.

PETE MAMAN
B.A.; Oglethorpe University
Physical Ed. and Coach.

G. E. OSTERBERG
B.S.E.; Penn. State Teachers
College.
Mathematics.

JOYCE ROSS
A.B.; Gulf Park College,
University of Alabama, Uni-
versity of Florida.
English.

DORIS SATTERWHITE
B.A.; Brenau.
Physical Ed. and Coach.

PHILIP C. SHUFORD
B.S.A.; University of
Florida.
Vocational Agriculture.





CHARLES H. SMITH
B.S.; University of Georgia.
Industrial Arts and
Physical Ed.

ELIZABETH W. SPROULL
B.S.; University of Georgia.
Vocational Home Economics.

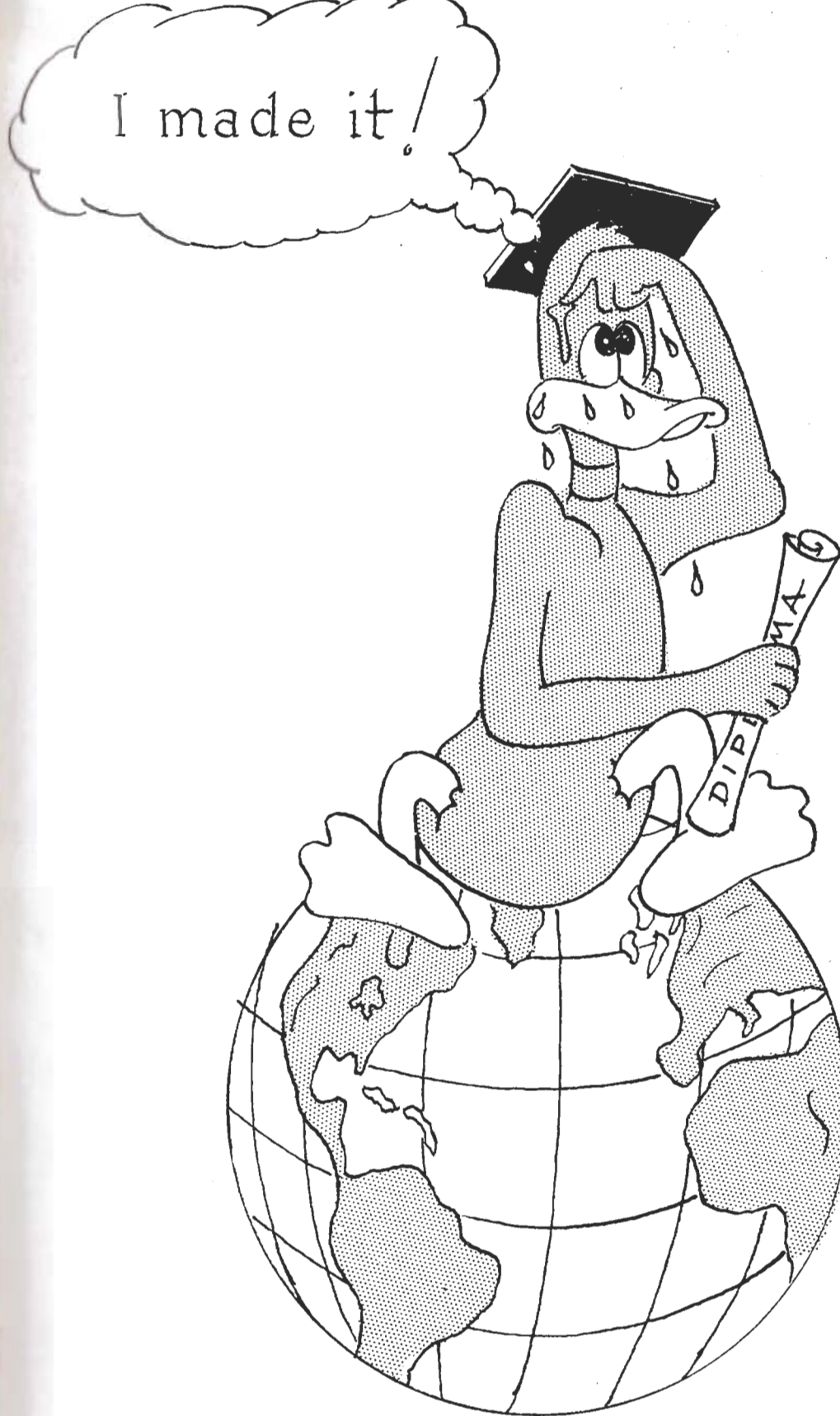
ANDREW F. SWAPP
A.B., B.D., B.S., M.A.;
Bowdoin College, Bangor
Seminary, Florida Southern
College.
Math. and Science.

JOHN TARTER
A.B.; Eastern Kentucky State
College, University of Ken-
tucky.
Geography.

WILLIAM TURNBULL
B.M.; Stetson University.
Band and Glee Club.

Mrs. J. W. WARWICK
B.S. in Ed.; Florida State
University.
Typing and Business Math.

BETTY R. WILLIAMS
B.S.E.; Florida State Uni-
versity.
English and History.



GORDON BUCKLES

"If you want someone without a care
Just call and he'll be there."

F.F.A.



TOMMIE JO CRABTREE

"He likes to see excitement brewing.
That's how he gets his teachers stewing."

F.F.A.

HILLY DEFRESE

"Never trouble trouble 'til trouble troubles you."

Key Club 3, 4; Band 1, 2, 3, 4; Capt. 3; N.F.L. 1; Spanish Club; Keyhole Staff.



ANNETTE FUTCH

"We hardly heard her speak at all.
But she'll be remembered by us all."

Glee Club; Little Women's Club; Usher Jr. Play; Usher Sr. Play; F.H.A. 1, 2; 4-H Club 1.

CHRISTINE CALLAHAN

"Definitely not a man-hater."

Spanish Club 2, 3; Softball 1; F.H.A. 1; Beta Club 4; Annual Staff.



DOTTIE CULPEPPER

"Loved by Douglas, liked by all,
What better luck can a girl befall."

Transferred from Inverness, Sophomore Year; Class Officer 2, 3; Basketball 2, 3; Little Women's Club 2, 3, 4; Beta Club 2, 3, 4; Spanish Club 2, 3; Key Club Sweetheart 4; Keyhole Staff 4; Annual Staff.

GEORGE EMERSON

"I like work, it fascinates me; I could sit and watch it for hours."

Football 3; Basketball 3, 4; Class Officer 3; Annual Staff; Baseball 3, 4.



WESS GLISSON

"If women interfere with work—quit work."

Football 1, 2, 3; Baseball 1, 2, 3, 4; Varsity Club 1, 2, 3, 4; F.F.A. 1, 2, 3, 4.

KATHRYN COBB

"A girl who's sweet; to know her is a treat."

Freshman Waitress; Little Women's Club 2, 4; F.H.A. 1, 2; Spanish Club 2, 3; Beta Club 2, 3, 4; Annual Staff; Usher at Graduation 3; Usher Senior Play; Class Officer 3.



BILLIE CUTLER

"I didn't come to learn,
I came to laugh."

F.F.A.

BERTA SUE FERRELL

"She is gentle, she is shy,
but there is mischief in her eyes."

Annual Staff, Asst. Business Manager; Freshman Waitress; Beta Club 2, 3, 4; Little Women's Club 2, 3, 4; Spanish Club 3, 4; Keyhole Staff; Junior Marshal; Softball 3; F.H.A. 1, 2.



DORIS GORNTO

"You must look into people as well as at them."

Beta Club 2, 3, 4; Usher Jr. Play; Usher Sr. Play; F. H. A. 1, 2.

TWILA CONWAY

"A smile, a greeting glad,
An amiable, jolly way she had."

N.F.L. 1, 2; Latin Club 2; Spanish Club 3; Annual Staff; Beta Club 2, 3, 4; Little Women's Club 2, 4; Band 1, 2, 3, 4; Drum Majorette 3, 4; Usher Senior Play; Class Officer 3.



SHIRLEY DAVIS

"The only way to have a friend is to be one."

Beta Club; Spanish Club 3, 4; F.H.A. 1, 2; Usher at Graduation; Basketball 2, 3, 4; Usher Senior Play; Voice of Democracy Winner.

BICHY FLANDERS

"A greater lover never lived."

Football 1, 2, 3, 4; Baseball 1, 2, 3, 4; F.F.A. 2, 3, 4; Varsity Club 3, 4.



ELSIE GUENTHER

"Divinely tall—and most divinely fair."

Spanish Club; Little Women's Club; Makeup Committee Jr. Play.

LOIS HAMILTON

"A sweet disposition, a neat appearance, a host of friends, what else need she want?"



RUTH BROWN HERBERT

"Short and cute and full of life—
She'll make Don a very swell wife."

F.H.A. 1, 2.

SADIE HOWARD

"Not always smiling but at least serene."

Annual Staff; Usher Jr. Play.



TOY JACKSON

"If worry were the only cause of death, then he would live forever."

Football 2, 3, 4; F.F.A. 2, 3, 4; Beta Club; Varsity Club 4; 4-H Club 4.

CLAUDE HAWYER

"A good sport, a good student, a good friend."

Football 1, 2, 3, 4; All-Conference 4; Baseball 2, 3, 4; Varsity Club 3, 4; Master of Ceremonies Jr. Play; Key Club 4; Latin Club; Class Officer; Keyhole Staff.



HAROLD HITCHCOCK

"He speaketh not; and yet there lies a conversation in his eyes."

Agriculture 1, 2, 3; F.F.A. 1, 2, 3, 4.

MANTHA LEE HUGHES

"A good-natured person is never out of place."

Latin Club; Spanish Club 3, 4; Little Women; Beta Club 2, 3, 4; Annual Staff; Student Director Sr. Play.



ROY JOHNSON

"Good nature and good sense are never joined."

Football 1, 2; Ind. Arts Club; Varsity Club 1, 2; Annual Staff; "Davenport", Sr. Play.

JUNE HARRIETT

"Bright, brunette, but never bashful."

Freshman Waitress; Spanish Club 2, 3; Girls' Chorus 1; Glee Club 4; Letterettes 3, 4; Basketball 1, 2, 3; Cheerleader 2, 3, 4; Class Officer 4.



LORRAINE HODGE

"Her care was to never offend. Every creature was her friend."

Latin Club 2; Little Women 2; Spanish Club 3, 4; Beta Club 2, 3, 4; Annual Staff; Class Officer 4; Marshal at Graduation 3; "Grandma", Jr. Play; Usher Sr. Play.

PEGGY JO HULL

"To be jolly, sincere, and an athlete is indeed a combination hard to beat."

Freshman Waitress; Spanish Club 2, 3; Letterettes 3, 4; Glee Club 4; Cheerleader 2, 3, 4, Capt.; Basketball 1, 2, 3, 4; Sylvia, Jr. Play; Annual Staff.



ACK JONES

"Not too sober, not too gay, a real good friend in every way."

Football 1, 2, 3, 4; Key Club 2, 3, 4; Beta Club 2, 3, 4; Stage Manager Junior Play; M. C. Jr.-Sr. Banquet 3; Editor "Keyhole" 4; Florida Boys' State 3; Business Manager Annual; Latin Club 3; Pres. Key Club 4.

LORETTA HEBERT

"Kindness is the golden chain by which society is bound together."

Library Staff 2, 3; Make-up Committee Sr. Play.



JACKIE HOGARTH

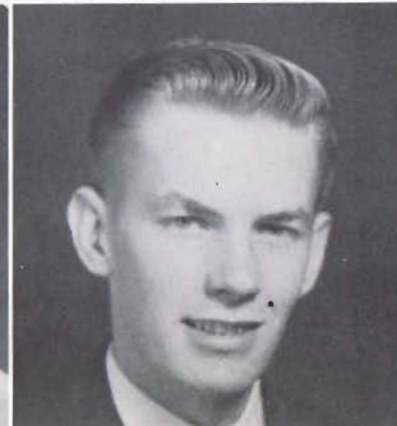
"Just a pal, kind and true, a loyal classmate through and through."

Band 1, 2, 3; Beta Club; Class Officer 3; Mrs. Anglin, Jr. Play; Mrs. Haggett, Sr. Play; Spanish Club; Annual Staff; Glee Club.

GLAYDINE HUTCHINSON

"As her own simple self she is best."

Beta Club 2, 3, 4; F.H.A. 2; Glee Club 3; Usher Sr. Play; Class Officer 2; Radio Club; Transferred from Stauntonville High School in Jr. Year.



ALLEN JONES

"Those move easiest that have learned to dance."

Transferred from Walker High, Walker, Minnesota. 4-H Club, 4; Feature, "Best Dancer."

LEROY JUNE

"In quietness and confidence shall be your strength."

Ind. Arts 1, 2, 3; Baseball 1, 2; Radio Club.



LINDA LEE

"She moves a goddess and she looks a queen."

Freshman Waitress; Beta Club 2, 3, 4; Little Women's Club 2, 3, 4; Spanish Club 3, 4; Usher at Graduation; Basketball 2; Glee Club 3; Football Queen 4; Girls' Chorus 2; "Ada" Sr. Play.

GENE MAST

"Very bashful, so we're told, so nice a boy should be more bold."

Football 1, 2, 3, 4; Baseball 1, 2, 3, 4; Varsity 2, 3, 4; Ind. Arts 1; Basketball 1, 2, 3.



ALLEN MONROE

"He is a boy who has much to say, He can keep on talking all through the day."

F.F.A. 1, 2, 3, Vice-Pres. 4; "Warren", Sr. Play.

NEDRA KELLEY

"Her smile is a cue for conversation."

Spanish Club 1, 2; Beta Club 3, 4; Glee Club; Little Women's Club 2; Band 2; Jr. Play Make-up Committee; Sr. Play Usher.



DONNA McNAB

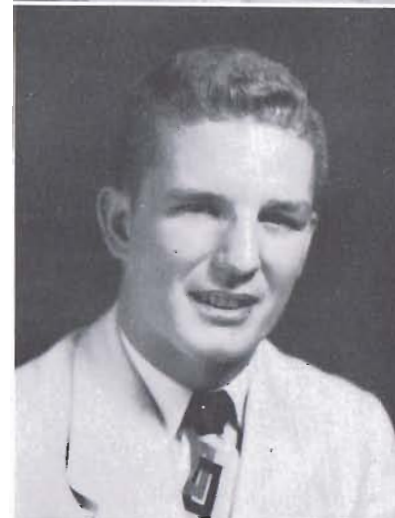
"As calm as a hurricane."

Freshman Representative Jr. Sr. Banquet; Latin Club; Beta Club 2, 3, 4; Spanish Club 3, 4; Basketball Manager 4; Glee Club 4; Annual Staff; Little Women.

EDDIE MATHEWS

"He was a leader of men and a follower of women."

Football 1, 2, 3, 4; All-Conference 4, Captain 4; Baseball 1, 2, 3, 4, 5, All-District 4; Basketball 1, 2, 3, 4, All-Conference 2, All-District 2; Varsity Club 1, 2, 3, 4, 5; Key Club 4; Faculty Athletic Award 2; Keyhole Staff; Class Officer 3, 4, Pres. 3.



DOYLE MOODY

"Happy am I; from care I am free. Why aren't they all contented like me?"

F.F.A.

DON LADD

"Smart in classes, gay outside; not available—'cause we've tried."

Class Officer 1, 2, 3, 4; Latin Club; Beta Club; Key Club; Editor of Annual.



MEREDITH MAJOR

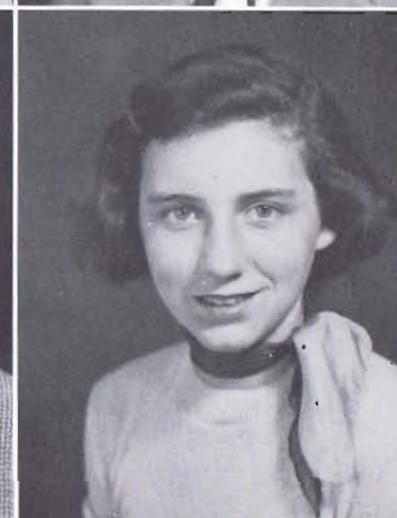
"Life is really simple, but girls insist on making it complicated."

Industrial Arts 2, 3.

DOUGLAS MILLER

"It's no use—I have a girl."

Football 1, 2, 3, 4, All-Conference 4; Baseball 2, 3, 4, All-District 3; Home-From-Home 1, 2, 3; Key Club 4; Beta Club 4; Varsity Club 1, 2, 3, 4; Annual Staff; Keyhole Staff; Frank Hancock Trophy 3.



ELIZABETH MORTON

"Silence is the most perfect herald of joy."

Beta Club 2, 3, 4; Spanish Club 2, 3; Annual Staff; F.H.A. 1.

REUNETTE LANE

"Always ready for a joke."

Spanish Club 3, 4; Class Officer 1; Softball Manager 2, 3, 4; May Queen 2; Co-chairman of Publicity 3; Ticket Chairman Sr. Play; Glee Club.



WAREATHA MANNING

"She is pretty to walk with, and witty to talk with, and pleasant to be with."

Usher Jr. Play; Glee Club; Usher Sr. Play; F.H.A. 1, 2.

ROBERT MINTON

"We'll laugh at life until we're laid low ill, When need is nigh, guess we'll have a will."

Football 1, 2, 3, 4; Varsity Club 1, 2; Track 3, 4; F.F.A. 1, 2.



JOE MULLIS

"Sigh no more, ladies! Sigh no more!"

Industrial Arts 2, 3; Key Club; F.F.A. 4; Football 1, 4; Varsity Club 3, 4; Basketball Manager 4.

EDNA PATRICK
 "I never met a man I didn't like."

Freshman Waitress; Cheerleader "B" 1, 2, 3; "A" 4; Little Women 2; Spanish Club 2, 3; Girls' Chorus 1, 2; Glee Club 4; Annual Staff; "Ada", Senior Play; Letteretts 4.



JANE REESE
 "What sunshine is to flowers, her smiles are to her friends."
 Transferred from Lake City 4.
 President F.H.A. 4; Little Women's Club Chaplain; Spanish Club.

MEREDITH PAYNE
 "Her eyes are hazel, her smile appealing, Someone's heart they're always stealing."

Freshman Waitress; Latin Club 2; Beta Club 2, 3, 4; Mrs. McLean, Jr. Play; Mrs. Haggitt, Sr. Play; Letteretts 3, 4; Basketball Manager 2, 3; Keyhole Staff; Annual Staff; Little Women's Club; Usher at Graduation 3.



RURT REVELS
 "Tall, athletic, and full of fun. First give him blondes then anyone."

Football 2, 3, 4; All-Conference 4; Varsity Club 4; Baseball 4; Track 3; Band 1, 2, 3; Latin Club 3; "Max", Jr. Play; Keyhole Staff; Annual Staff; Class Officer 4; Key Club.

SHARON POLK
 "If words were dollars, what a millionaire she'd be."

Freshman Waitress; N. F. L. 1, 2; Annual Staff; Beta Club; "Susan", Sr. Play; Keyhole Staff; Little Women's Club 2, 3, 4; Usher at Graduation 3; Class Officer 4; Ad Committee 3.



MARION RICKS
 "Too modest to reveal her accomplishments or ideals."
 Usher at Jr. Play.

LOUETTA SASSER
 "I was born to talk, and talk I must."
 Little Women 2, 3; Class President 2; Beta Club 3; F.H.A. 1; Annual Staff; Co-Chairman Ad Committee 3; Co-Chairman Typing Committee 4.

OWEN RAMSEY
 "Women are pests!"
 Football 1, 4; Jr. Play; Homecoming Attendant 4.

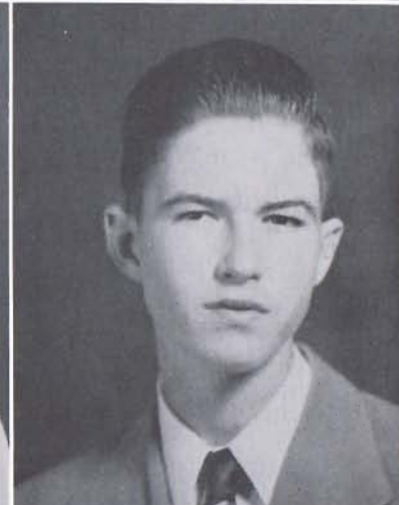


RONNIE ROSKOSH
 "Let others labor: I will rest."
 Football 1, 2, 3; Baseball 1, 2; Ind. Arts 1; 4-H Club; Varsity Club 4; Annual Staff.

MARY JEAN SAUNDERS
 "Quiet persons are welcome everywhere."
 Usher Jr. Play; Usher Sr. Play; F.H.A. 3, 2.



DON SCHWEITZER
 "A born navigator."
 F.F.A. 1; Ind. Arts 1; Annual Staff; Ticket Committee; Jr. Play; "Talent", Sr. Play; Radio Club 1.



WARREN SHERWOOD
 "Why take life so seriously? You'll never get out of it alive."
 Industrial Arts 3.



BETTY ANN SMITH
 "Loyal at heart, strong of mind, A finer friend you'll never find."
 Latin Club.



DORIS SMITH
 "She who sings frightens away her ills."
 Transferred from Jacksonville.
 "Minnie", Jr. Play; Glee Club 3, 4; Annual Staff; Spanish Club 2, 3; Class Officer 4; Little Women's Club 2, 4; Jr. Red Cross 3.

MARGARET SMITH

"Ask me no questions, I'll tell you no lies."

Freshman Waitress; Spanish Club 1, 2; Usher Jr. Play; Usher Sr. Play; Glee Club 4; Little Women 2; F.H.A. 1, 3.



BILL SWILLEY

"Wise is he who knows nothing of women."

Key Club; Radio Club; 4-H Club; Ind. Arts; Beta Club; Latin Club; Annual Staff; Keyhole Staff.

BARBARA VANNOOE

"Good humor is goodness and wisdom combined."

Freshman Waitress; Spanish Club 2, 3; Letterettes 3, 4; Glee Club 4; "Minnie", Jr. Play; Annual Staff; Basketball 1, 2, 3, 4; Softball 1, 2, 3, 4; Cheerleader "B" 3, "A" 4.



GERALD WELLS

"Better to be small and shine, than to be great and cast a shadow."

Latin Club.

BOBBIE STEWART

"Life without mischief is not life at all."

Freshman Waitress; Little Women's Club 2, 4; Spanish Club 2, 3; Cheerleader "B" 2, "A" 3, 4; Letterettes 4; Usher at Graduation 3; F. H. A. 4; Glee Club 1, 4; Keyhole Staff 4; Annual Staff.



MARY JO SYME

"So silent we hardly know her."

Beta Club 2, 3, 4; Spanish Club 1, 2; Prompter Sr. Play; Little Women's Club 2; Annual Staff.

BORRIS VAUGHN

"Very quiet, never still, always cuttin' up to kill."

Freshman Waitress; Spanish Club; B-Squad Cheerleader; Little Women; "Sensen", Sr. Play; "Julie", Jr. Play; Glee Club; Annual Staff; Keyhole Staff.



JOHN WESTER

"Life is tedious."

Spanish Club 1, 2; Annual Staff; Props Committee, Jr. Play.

JOE STROCK

"Manly in bearing, honest, and true; The world has need of men like you."

Key Club 4; Spanish Club 3, 4.



WILFORD THOMPSON

"I don't see what happens as long as it doesn't happen to me."

Football 3, 4; Basketball 3, 4; Baseball 3, 4; Band 1, 2; Annual Staff 4; Radio Club 3; "Shepard McClean", Jr. Play; "Kosen", Sr. Play.

SANDRA WADDEPS

"True, quiet, serene, Her future life is foreseen."



MERLE WILDER

"A witty blonde, who's always gay, With pleasure she will fill each day."

Band 1, 2; Spanish Club 2, 3; Little Women 2, 4; F. H. A. 1; Beta Club 3, 4; Keyhole Staff; Annual Staff; Usher Sr. Play; Jr. Red Cross 3; Class Officer 4.

ROBERT STRICKLAND

"Nothing is ever achieved without enthusiasm."

Band 1, 2, 3, 4; Beta Club 4; Annual Staff; Jr. Play Asst. Stage Manager; "Dr. Haggett", Sr. Play.



NELDA TYRE

"Everyone's friend, to all a pal, Nelda sure is one nice gal."

Annual Staff; Art Committee; Little Women's Club 3.

MARINA "SITIE" WAITS

"Fuzzy dark hair, a welcome smile, to her you'll find a friend worthwhile."

Freshman Waitress; Glee Club; Little Women's Club; Glee Club; Make-up Chairman Sr. Play; F.H.A. 4; Annual Staff.



LEROY WILKINSON

"Contentment is the fairest form of happiness."

Industrial Arts 2, 4.

SHIRLEY WATKINS JOHNSON

"Fun, frolic and glee are there,
The will to do, and the soul to dare."

Freshman Waitress; Spanish Club 1, 2; Basketball 1, 2; Band, Drum Majorette.



W. M. WILSON

"Men of few words are the best men."

Football 2, 3; F.F.A. 2, 3, 4; Varsity Club 2, 3, 4; Class Officer 3.



JUNE BENNETT
Treasurer

MERLE WILDER
Secretary

SHARON POLK
Vice President

JUNE HARRIETT
President

MRS. W. W. CARTER
Sponsor

ELIZABETH JANE LEMMOND

"Cute and small
And liked by all."

Transferred from New Smyrna Beach.
Latin Club; Beta Club.



DONALD WILLIAMS

"Knows everybody, likes everybody, is liked by everybody."

Football 2, 3, 4; Baseball 2, 3, 4; Key Club; Beta Club, Pres. 4; Varsity Club 4; Annual Staff; Marshal Graduation 3.

CLAUDE HARPER
Treasurer

JOSEPHINE BRANNEN
Secretary

MRS. JOSEPHINE CARTER
Sponsor

LORRAINE HODGE
President

DON LADD
Vice President



MARY JOAN THOMPSON

"Speech is given to a woman to conceal her thoughts."

Transferred from Andrew Jackson, 1952.
Glee Club.



Mascots



TONI TODD



SKIPPER HEWITT



DONALD WILLIAMS
President

MR. OSTERBURG
Sponsor

JOE MULLIS
Vice President

EDDIE MATHEWS
Treasurer

BURT REVELS
Secretary



DORIS AND IRIS



BEE JAY



KATHRYN



JOANNE AND SISTIE



BETTY



NORMA JEAN



RONNIE



BOBBIE



NEDRA



LINDA



DOUGLAS



JUNE



MARGARET ALICE

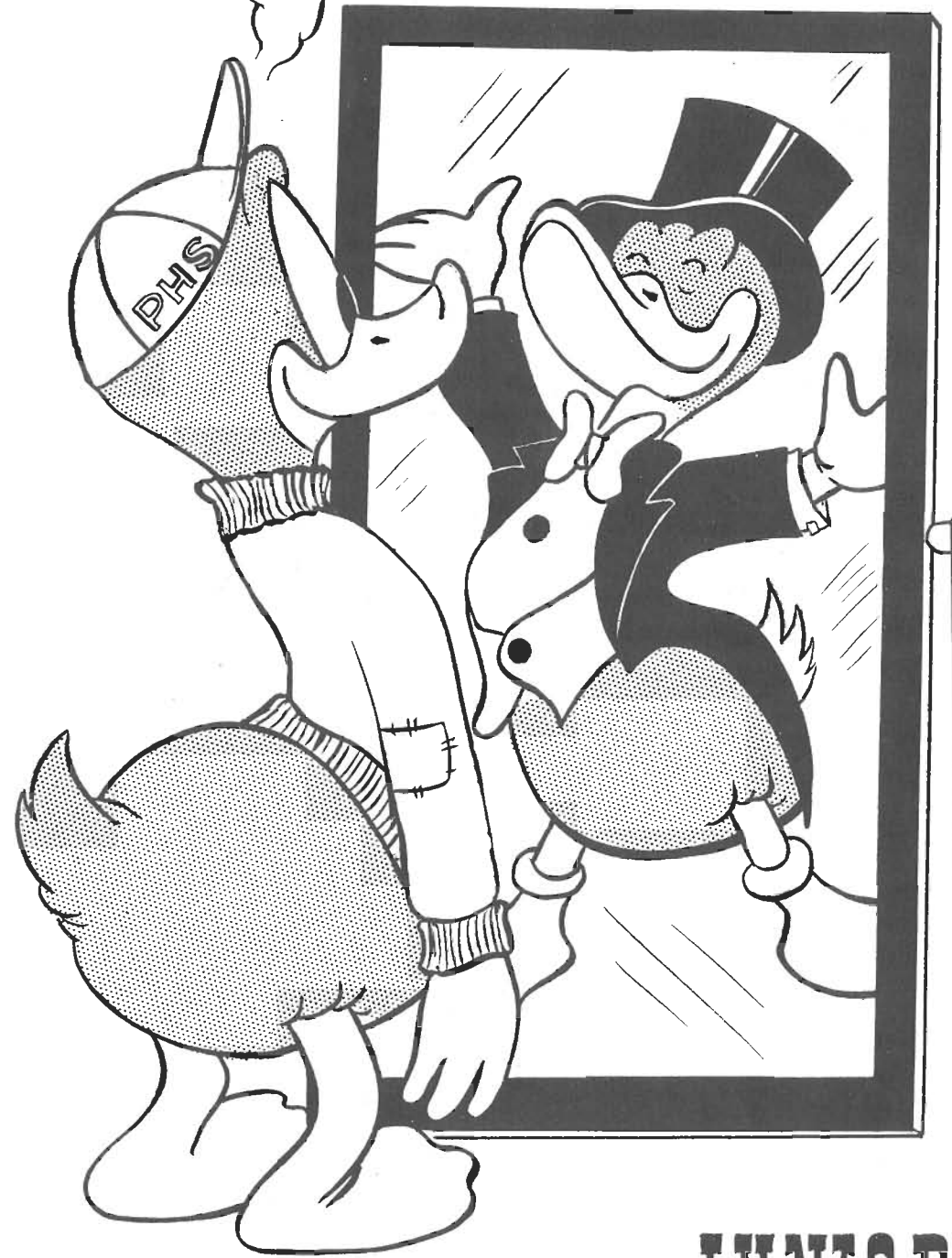


DOTTIE



W. M.

FUTURE GRADUATE



WDT

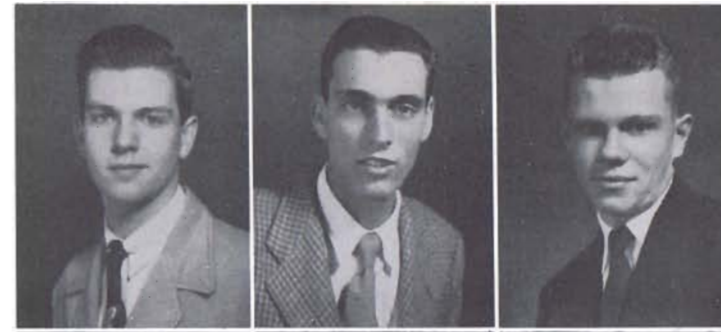
JUNIORS



DONALD ANSLEY
JERRY BECK
BETTY BENNETT



DICK BIDDLE
DONALD BIVINGS
JOHN ALLEN BLOUNT



HENRY FUMICH
FLOYD GEOGHAGEN
BILLY GERMANY



EUNICE GLISSON
MARION GOULD
JOYCE GRAY

JACKIE BOGGAN
JERRY BOGGAN
JOAN BRAGG



WARNER HALLORAN
JUDY HARDENBURGH
BERNICE HARPER

CHRISTINE BROOKS
CLEVELAND BUSH
JIMMY CARTER



ROY GRAVES
MARGARET GRIFFIN
LOIS GUILFORD



MINNIE ALICE CUBBEDGE
DORIS DOBBINS
TERRELL ECKER



ANDREW EFSTATHION
ALICE FERRELL
LILLIAN FERRELL

CLAYTON HARRISON
PATRICIA HARRISON
MELVIN HARVEY



NORMA HARVEY
THELMA HARVEY
RALPH HITCHCOCK





J. W. HODGES
BONNIE HOLLEY
AUDREY HOWARD



ROXIE HUNTLEY
SHIRLEY KEMP

TOMMY LADD
HERBERT LEWIS
GEORGE LONG



FORREST MACDONALD
JENNINGS MCGAULEY
WINONA MARVIN



MERLE REED
NANCY JEAN REEL
PATRICIA REGISTER

RICHARD REGISTER
ROBERT REVELS
EDWARD RICHARDSON



NORMA JEAN MATHEWS
MYRA JEAN MAYO
MARGARET METHVIN



VIRGINIA MICHLER
SALLY NECK
ANNE OGLESBY

CURTIS O'STEEN
RAY OWEN
BILLY PALMER



BARBARA PARKER
RALEIGH PICKELS
JEANNE RAY



ROGER ROBERTS
JACKIE SCOTT
DONALD SHIELDS



MARIETTA SIMMONS
TEDDIE SINGLETARY
HOWELL SMITH





IRIS SMITH
JIMMY SMITH
HERMAN SOLANO



GEORGE STALLINGS
KENDRICK STANLEY
BRYAN STRANGE

JAMES SUCICH
BILL TATUM
MARTHA TAYLOR



LYNELL THOMAS
HOWARD TILLIS



JO TOUCHTON
GEORGE TYLER
NADINE TYRE



RICHARD VARNADOE
DARTHULA WALL
BILLY WALLING



SHIRLEY WATERS
BEVERLY WATTLES
CLARENCE WELLS



MORRIS WERKHEISER
RICHARD WESTBURY
AVERY WIGG

DELANO WILKES
JAMES HUBERT WILLIS
EUGENE WILLIAM WISE



Junior Play 1951

Sitting: Wilford Thompson, Owen Ramsey, Peggy Jackson Hull, Barbara Varnadoe.

Standing: Claude Harper, Burt Revels, Luther Chellette, Meredith Payne, Doris Smith, Robert Pike, Bobbie Vaughn, Donald Schweitzer, Lota Bruce, Lorraine Hodge, Robert Strickland, Norma Jean Bainbridge, Jackie Hogarth, Martha Waits, Mrs. Paul S. Snoak, Director.

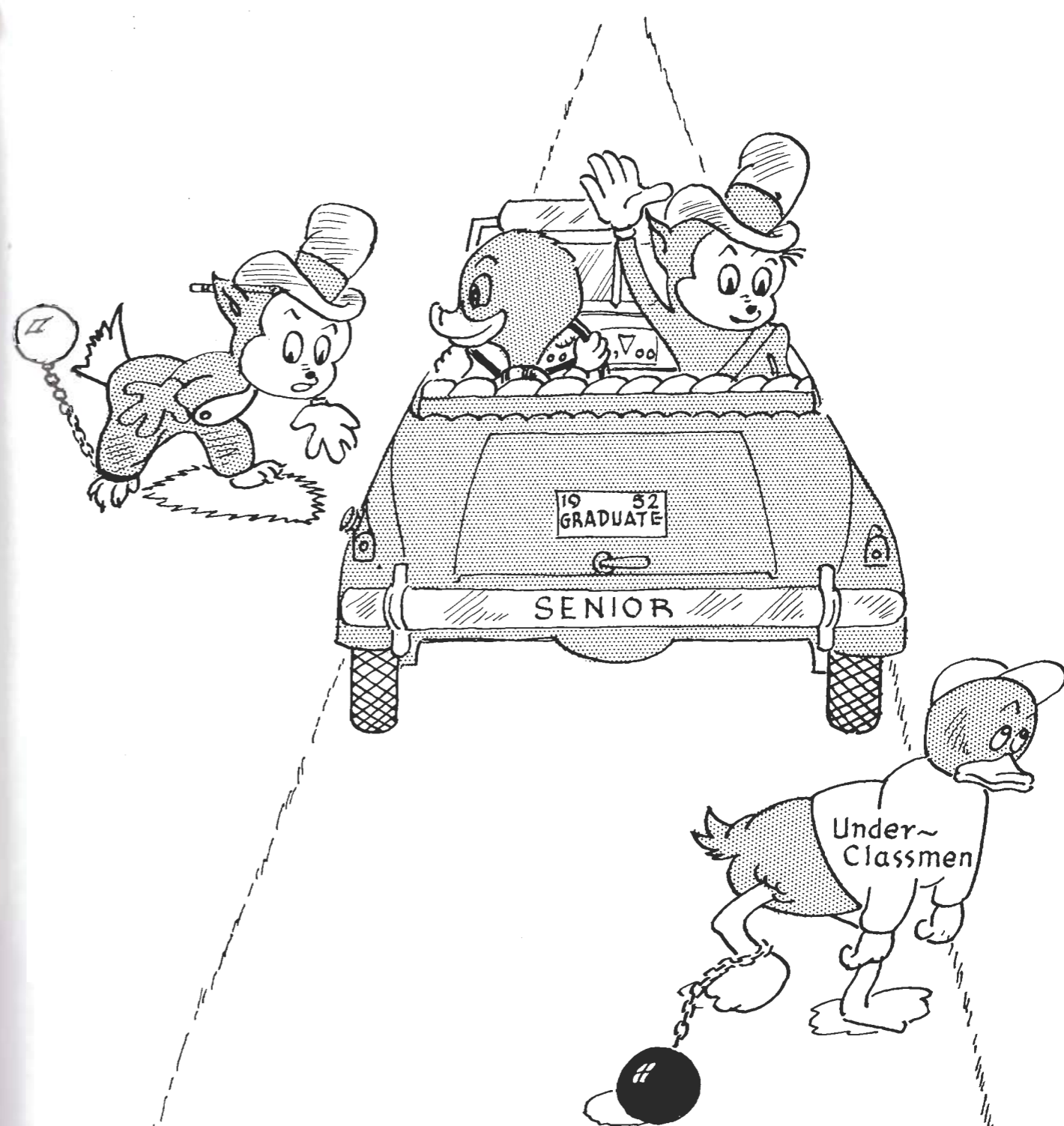




Row 1: Mr. Lou Baker, Director; Bobbie Vaughn, Allen Monroe, Artie Allard, Edna Patrick, Wilford Thompson.
 Row 2: Doris Smith, Christine Callahan, Martha Hughes, Mary Joe Syme, Billy Swilley, Jimmy Bryan, Roy Johnson, Robert Strickland, Jackie Hogarth, Donald Schweitzer, Mrs. W. W. Carter, Mrs. Josephine Carter.

Senior Play 1952

Row 1: Mr. Lou Baker, Director; Josephine Brannen, Linda Lee, Doris Smith. Standing: Mary Jo Syme, Martha Lee Hughes, Sharon Polk, Allan Monroe, Cecil Baughman, Robert Strickland, Meredith Payne, Donald Schweitzer, Christine Callahan, Wilford Thompson.



UNDERCLASSMEN

WDT



Sophomore A

Row 1: R. E. Blaser, Teacher; Sandra Cannon, Joan Bledsoe, Loretta Register, Annette Minton, Joy Carpenter, Marlene Taylor, Demia Lewis. *Row 2:* Bobby Barrentine, Floyd Driggers, Barbara Siegel, Dorine Eubanks, Wilda Johnston, Ina Jean Warren, Betty Sue Sadler, Sue Nelson, Marianne Tenney, Bruce Hall. *Row 3:* Bruce Averile, Charles Vaught, Paul Elliot, Kenneth Wilkinson, Herbie Smith, Kenneth Sweet, Hans Hansen, Allen Grant, W. G. Cutrer, Jack Winstead.

Sophomore B

Row 1: Bettie Ann Mallette, Beverly Ramage, Dorothy Smith, Jo Anne Earls, Shirley Lane, Grace Godfrey, Carole Carter, Sonia Westbury, Mr. Elrod. *Row 2:* James Stock, Roberta Dixon, Jean Stuart West, Gertie Shirey, Nancy Futch, Sara Butler, Edith Clark, Rudolph Hickey. *Row 3:* Allen Alford, Audrey Collette, Louis Earle Tenney, Jr., James Watkins, Mitchell Johnson, Billy Turner, Eugene Baker, Donald Guthrie. *Row 4:* Clyde McKendree, Wade Bell, Gale Ernsberger, Jimmy Ross.

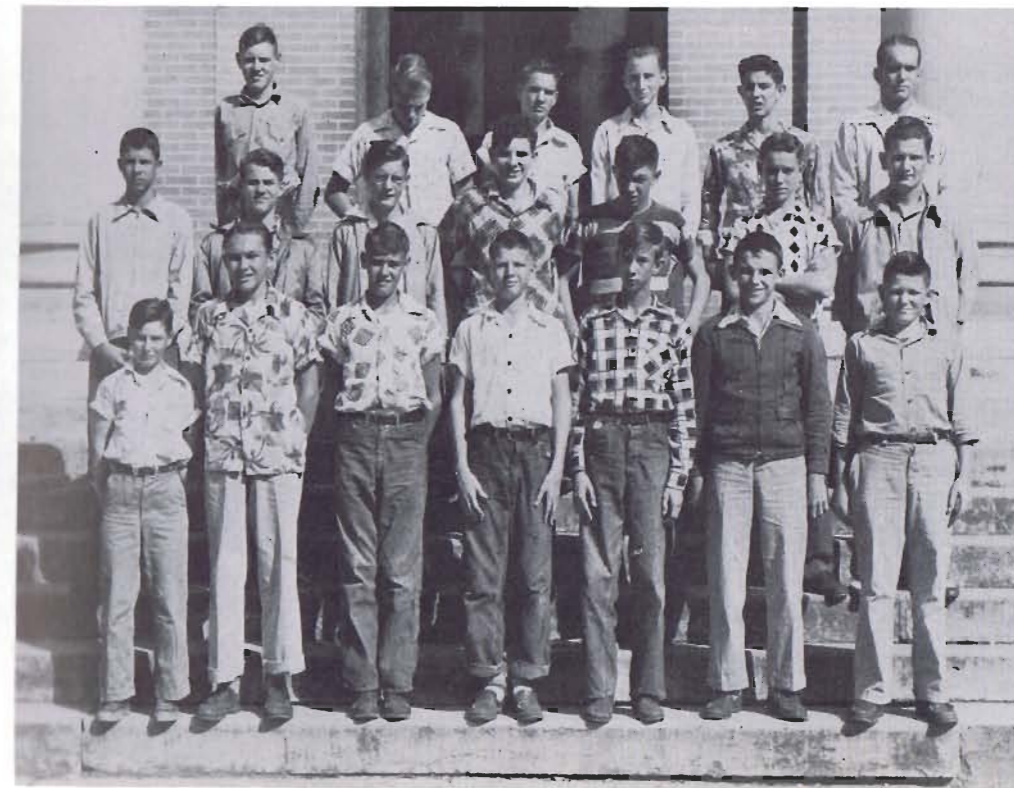


Sophomore C

Row 1: Miss Joyce Ross, Betty Thomas, Edna Burney, Ann Ell Crosby, Susie Newlan, Jackie Lewis, Jeanette Harriett, Jeanline Jackson, Barbara Jernigan. *Row 2:* F. J. Fearnside, Reba Moody, Iris Chastain, Irma Bainbridge, Jo Ann Baggett, Shirley Waters, Billie Jean Vincent, Irving Earls. *Row 3:* Joe Sanders, Fred Williams, Donald Roberts, Allan Sanders, Fred Burney, Buck Brannen, Leo Green, John Cannon.

Freshmen E

Row 1: Eldon Blount, Charles Allen, Johnny Baggett, Wesley Staples, Claude DeGoyler, Richard Hardenburgh, Larry Clark. *Row 2:* Charles Humphrey, Dickie Wagner, Henry Williams, Pat Green, Freddy Williams, Charles June, Philip Solano. *Row 3:* George Skidmore, Johnny Ballard, Kenneth Mayo, Don Touchton, Richard Horton, Philip Shuford, Teacher.





Freshmen A

Row 1: Betty Thomas, Elizabeth Matthews, Mary Jane Maltby, Jane Graham, Jeannine Parker, Kathryn Slaughter, Helen Robshaw, Mary Register. *Row 2:* Sue McGraw, Corinne Sisson, Ruth Morton, Barbara Ann Burroughs, Jeannine Whitaker, Ann Johns, Kay Wise, Neita Taratus, Nora Wilkinson. *Row 3:* Wayne Dunn, J. E. Schmidt, John Warren Tilghman, Sam Feldman, Bill Faulk, Morris Welch, Mrs. Marian Austin. *Row 4:* Raymond Kilgore, Frank Williams, Marshall Westbrook, Billy Higgins, Jackie Russell.

Freshmen B

Row 1: Carolyn Lemmond, Lillian Stafford, Betty Jo Stewart, Julia Rankin, Marjorie Snuth, Barbara Morgan, Louise Dupree, Carolyn Grooms, Faye Kembro, Loretta Shealy. *Row 2:* John Causey Tillotson, Vertis Glisson, Myrtle Yarborough, Beverly Ann Cate, Nancy Kelley, Kay Smith, Patricia Huber, Frances Young, Darlene Ellis. *Row 3:* Jimmy Musselwhite, Broughton Long, Allen Day, Jack Pendergrass, Robert Coulliette, Warren Schaper, Cul Watkins, Anthony Stephens, Emory Roberts, Allen McWhirter. *Row 4:* Nicholas Smith, Jack Millican, Lonnie Keene, Edwin Arneson, Ronald Biddle.



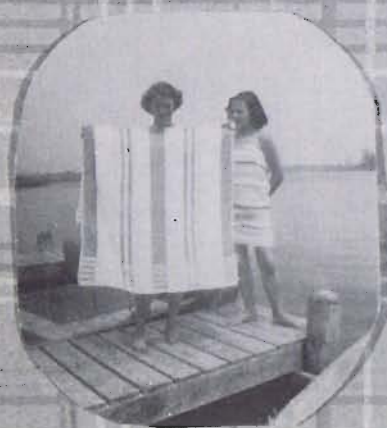
Freshmen C

Row 1: Nadine Lane, Frances O'Steen, Louise Williams, Velma Register, Ollie McLendon, Marie Wells, Ruby Dillard, Kay Harkness, Caroline Hogarth, Jackie Hitchcock. *Row 2:* Sylvia Rigdon, Joyce Vaught, Gloria Meltzer, Mary Elizabeth Green, Mary Sue Guthrie, Juanita Willis, Catherine Nichols, Elizabeth Polk, Beverly Mackenzie, Martha Lee Horton, Annette Cheshire, Irma Lee White. *Row 3:* Hugh Padgett, Carlton Brown, Johnny Sueich, John Owens, Philip Ladd, Tommy Newman, Buddy Harrell, James Whittle. *Row 4:* Billy Dillard, James Nipper, Jimmy Allen, Sam Johnson, Emory May, Bobby Adkins.

Freshmen D

Row 1: Betty Davis, Emma Davis, June Chancey, Mary Lou Blocker, Ethel Donaldson, Emily Sherwood, Ann Lewis, Vivian Simmons, Mrs. Elliot. *Row 2:* Nettie Wilkinson, Coleen Pheil, Billie Kimberland, Norma Barber, Frances Wilder, Yancy Murray, Joan Gambill, Rachel Chesser, Ladonne Willis, Barbara Cameron. *Row 3:* Raymond Wilkinson, Ormand Stallings, James Ross, Pat Brewer, Sambo Tilton, Joe Wilkins, Billy Poage, Alden Roberts, Donald Biddle, Charles Fox, B. A. Rodda.





Eighth Grade A

Row 1: Mr. Tarter, Warren Keen, R. H. Oliver, David Kline, Virginia Lenker. *Row 2:* Irma Barber, John Schacht, Bill Leitz, Adrian Hancock, Jimmie Minix, Richard Trede, Leon Dyal, Sammy Rye, Loraine Barber, Dema J. Cannon. *Row 3:* Jean Bogan, Buena Fulton, Karin Johnson, Betty Abbott, Sandra Johns, Gloria Vickers, Sandra Mayo, Regina Feldman, Mary Dixon, Janet Morrow, Virginia Ragin.

Eighth Grade B

Row 1: Robbie Nell Whittle, Betty Smith, Edith Cody, Wilma Bush, Patricia Godwin, Phyllis Higgins, Sandra Maxwell, Marianne Swilley, Mrs. Elrod. *Row 2:* Westley Tillis, Lamar Hudgins, John Heini, Marjorie Heini, Bertie Belle Cloer, Christine Smith, Mary Wigg, Dolores Wilkinson, Fred Motes, Clefford Tennant, Eugene Keene. *Row 3:* Gary Sunderland, Jerry Ferris, Emory Sheppard, Lee McDaniel, Leon Moses, Arnold Couliette, Jefford Johns, Connie White, James Ballard.





Eighth Grade C

Row 1: Mrs. Bryan, Louis Burney, Patsy Chapman, Judy Bennett, June Waters, Evelyn Smith, Ovieda Mills, Dawn Smith, Marshall Padgett. *Row 2:* George Burke, Allen Carnley, Magdalene Morris, Sally Stillwell, Nancy Fox, Juanita Suke, Ann Carroll, Wilda Paul Houston, Margaret Horton, Eddie Dukes, Billie Rozier. *Row 3:* Bobby Rivers, Wayne Lloyd, Tim Nelson, Samuel James, Kendrick Glisson, Carlton Taylor, Arlen Keen, Robert Crews, Sidney Johns.

Eighth Grade D

Row 1: Mrs. Butler, Bobby Young, Cordelia Jenkins, Vivian Johnson, Ruby Mae Register, Barbara Lillrik, Katherine Howard, Sandra Wolfenden, Evelyn Bradshaw, Freddie Baker. *Row 2:* Steve Stephens, Nell Bryan, Dolores Musgrove, Carolyn Richardson, Ann Haines, Vernelle Pye, Betty Jean Dennis, Bary Louise Minton, Carole Dean Murphy, Delphine Callahan, Jimmy Clark. *Row 3:* Thomas Lee Underwood, Doyle Weaver, Charles Williams, Willard Mullis, Donald Culpepper, Freddie McKenzie, Al Morris, Garland Owens.



Eighth Grade E

Row 1: Clara Mae Brown, Ann Reese, Marie Harper, Idell Register, Katie Williams, Sue Carter, Barbara Poindexter, Zella Mae Rich, Betty Land, Donna Humphrey. *Row 2:* Mrs. Williams, Roy Vickers, Dickie Ryals, Robert Browning, Bill Loy, Bill Harper, Gordon Brooks, Oliver Buckles, Cleo Stoeffler, Gene Wigg, Lenis Hebert. *Row 3:* Fletcher Crow, Fred Hurst, Richard Vinson, Richard Tillis, Robert Polk, John Bogue, Sherman Wilkinson, Warren May, Vernon Wilkinson.

Eighth Grade F

Row 1: Phyllis Thomas, Vera Dennis, Mildred Scott, Georgia Mae Saddler, Jewel McCraney, Patsy Courtney, Carmelina Lamoreaux, Cynthia Pound, Athena Sailor, Jo Ann Biggers, Ruth Sapp. *Row 2:* Rex Holloway, George Baughman, John Burt, Roxie Bennett, Nadine Johns, Harrelson Johnson, Bruce Dingley, Frank Adams, Ronald Clark, Woody Tilton. *Row 3:* Kenney Clark, Billy Jones, Joseph Tomlinson, Edgar Benedict, Herbie Carden, Elbert Blocker, Don Brown, Emil Purse, Mr. Swapp.





BETA CLUB

4-H CLUB BOYS

4-H GIRLS

GLEE CLUB

P.H.S. BAND

LETTERETTES

FUTURE FARMERS OF AMERICA

KEY CLUB

MAJORETTES

LITTLE WOMEN'S CLUB

VARSITY CLUB

ANNUAL STAFF

RADIO CLUB

INDUSTRIAL ARTS

SPANISH CLUB

LATIN CLUB

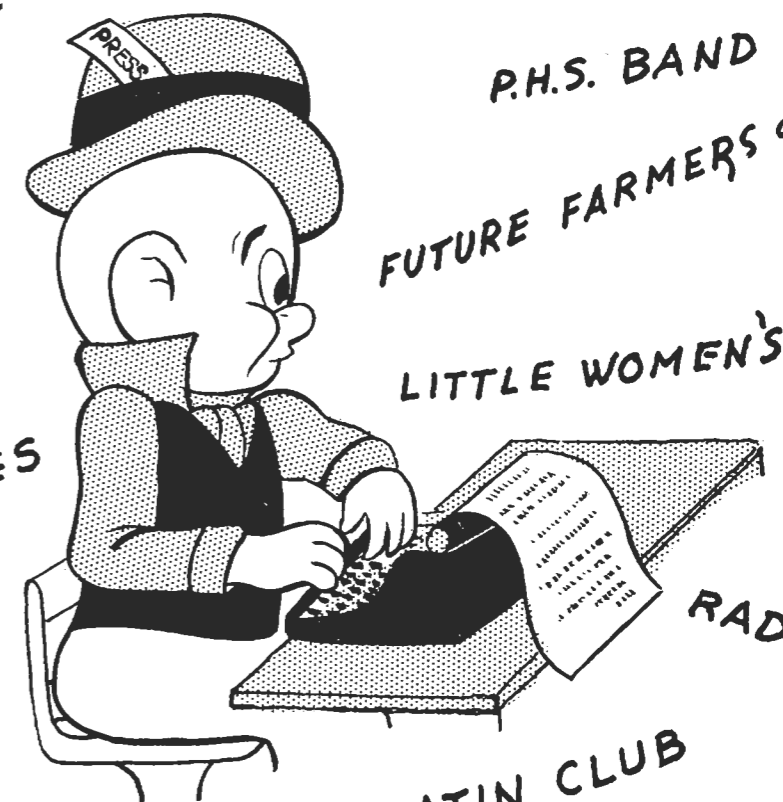
PATROL BOY'S

LIBRARY STAFF

KEY HOLE STAFF

FUTURE HOME MAKERS

ORGANIZATIONS





Annual Staff

Standing, left to right: Mrs. W. W. Carter, George Emerson, Wilford Thompson, Robert Strickland, Roy Johnson, John Wester, Jimmy Bryan, Bill Swilley, Donald Schweitzer, Meredith Major, Douglas Miller, Christine Callahan, Artie Allard, Elizabeth Morton, Patricia Brooks, Mrs. Josephine Carter, Twila Conway. *Sitting, Row 1:* Ack Jones, Donald Williams, Burt Revels, Meredith Payne, Sharon Polk, Bobbie Vaughn, Merle Wilder, Berta Sue Ferrell, Josephine Brannen, Donald Ladd, editor. *Row 2:* Martha Lee Hughes, Doris Smith, Dottie Culpepper, Norma Jean Bainbridge, Donna McNab, Sadie Howard, Nelda Tyre, Edna Patrick, Sistic Waits.



Beta Club

Row 1: B. J. Bailey, Donna McNab, Meredith Payne, Merle Wilder, Norma Jean Bainbridge, Twila Conway, Donald Williams, Ack Jones, Donald Bivings, Billy Swilley, Mr. Chastain, Sponsor. *Row 2:* Doris Dobbins, Roxie Huntley, Joyce Gray, Forrest MacDonald, Martha Lee Hughes, Jackie Hogarth, Shirley Davis, Sharon Polk, Anne Oglesby, Judy Hardenburgh, Richard Westbury, Richard Varnadoe, Tommy Ladd, Clarence Wells, Andrew Efstathion. *Row 3:* Winona Marvin, Minnie Aliee Cubbedge, Berta Sue Ferrell, Nedra Kelley, Douglas Miller, Dottie Culpepper, Sally Neck, Toy Jackson, Henry Fumich, Robert Strickland, Donald Ladd. *Row 4:* Claydine Hutchinson, Thelma Bradshaw, Christine Callahan, Linda Lee, Lota Bruce, Doris Gornto, Artie Allard, Pearl Baggett, Elizabeth Morton, Jackie Scott, Patricia Brooks, Jean Ray. *Row 5:* Margaret Griffin, Josephine Brannen.

Key Club

Row 1: Donald Bivings, Donald Williams, Ack Jones, Dottie Culpepper (Club Sweetheart), Billy DeFreese, Donald Ladd, Bryan Strange. *Row 2:* Fred Williams, Burt Revels, Douglas Miller, Claude Harper, Jimmy Bryan, Bill Swilley, Billy Germany, Mr. Elrod. *Row 3:* Eddie Mathews, Joe Stock, Joe Mullis, Clarence Wells, Tommy Ladd, Richard Westbury.



Library Staff

Seated: Pauline Smith, Loretta Hebert, Jimmie Barnawell. *Standing:* Beverly Mackenzie, Lillian Ferrell, Mr. Adams, Librarian, Carolyn Hogarth.





Glee Club

Row 1: Winnie Jones, Nedra Kelley, Bobbie Stewart, Annette Futch, Margaret Griffin, Iris Smith, Josephine Brannen, Jackie Hogarth, Wareatha Manning, Doris Nobles. Row 2: Ethel Donaldson, Patricia Brooks, Margaret Alice Smith, Bobbie Vaughn, Nancy Futch, Leah Roskosh, Barbara Varnadoe, Ila Jane Saucerman, Irene Barber. Row 3: Louetta Sasser, Bee Jay Bailey, Norma Jean Bainbridge, Carol Carter, Donna McNab, Doris Smith, Ann Ell Crosby, June Harriett, Edna Patrick, Sandra Williams, Mr. William Turnbull, Director. Row 4: Barbara Jernigan, Lorraine Hodge, Jeanne Ray, Artie Allard, Nell Singletary, Susie Newlan, Dorine Eubanks.

P. H. S. Band

Row 1: Susie Newlan, Twila Conway, Jeannine Parker. Row 2: Pat Brewer, Kenneth Toliver, Edward Richardson. Row 3: Myrtle Yarborough, Kenneth Clark, Helen Robshaw, Nancy Kelley, Gertie Shirey, Sandra Mayo, Cardelia Jenkins, Marianne Tenney, Ann Ell Crosby, Darthula Wall. Row 4: Freddie McKenzie, Don Brown, Joseph Tomlinson, Evelyn Bradshaw, Mary Jane Maltby, John Barrentine, Bruce Dingly, Joan Bledsoe, Winne Jones, Terrell Ecker. Row 5: Barbara Tenney, Ruby Allen Smith, Tommy Ladd, Gary Jenkins, Donald Ansley, Jimmy Clark. Row 6: John Allen Blount, Billy DeFreese, Sambo Tilton, John Owen, Warren Keene, Phillip Ladd, William Turnbull, Director. Row 7: Robert Strickland, Edward Benedict, Lonnie Keene.



Key Hole Staff

Seated: Billy DeFreese, Billy Swilley, Judy Hardenburgh, Merle Wilder, Norma Jean Bainbridge, Sharon Polk. Standing: Ack Jones, Douglas Miller, Claude Harper, Burt Revels, Berta Sue Ferrell, Martha Taylor, Meredith Payne, Lillian Stafford.

F. F. A.

Row 1: J. W. Hodges, Richard Register, Ronald Ballard, Billy Flanders, Toy Jackson, Robert Revels, Billy Walling, Jimmy Carter, Kenneth Wilkinson, Buddy Reed, Fred Barney, Hugh Padgett. Row 2: Glen Armstrong, Kendrick Stanley, Kenneth Sweet, Kenneth Toliver, Jack Boggan, Joe Weaver, Jack Methvin, Floyd Driggers, Clayton Harrison, Philip Solano, Sam Tilton, Larry Clark. Row 3: James Nipper, Floyd Geoghagen, Roger Roberts, Ralph Hitchcock, Raleigh Pickels, Hossell Smith, Jimmy Musselwhite, Charles McCall, Charles Humphrey, Charles June, Richard Horton. Row 4: Jim Stock, Joe Sanders, Johnny Baggett, Charles Allen, Ronald Wagner, Jerry Boggan, Mitchell Johnson, Freddie Williams, Dickie Wagner. Row 5: Allen Grant, Sam Johnson, Henry Williams, Wesley Staples, Bryan Pike, Pat Green, Eldon Blount, Philip Shuford, Advisor.





Junior 4-H Club

Row 1: George Burke, Allen Carnley, Cleo Stoeffler, Gene Antry Wigg, Marshall Padgett, B. A. Rodda, Roy Vickers, Dick Bush, Robert Browning, Mr. Clay. Row 2: Harrelson Johnson, Vernon Wilkinson, Robert Crews, John Bogue, Oliver Buckles, Samuel James, Arlen Keen, William Soy. Row 3: Ronnie Clark, John Schacht, Emory May, Wesley Staples, Hugh Padgett, Jr., Larry Clark, Philip Solano, Gary Jenkins, Woody Tilton.

Patrol Boys

Row 1: Ormond Stallings, Richard Trede, Tony Stephens, B. A. Rodda, Bobby Young, Steve Stephens. Row 2: Tim Nelson, Eugene Keene, Billy Dillard, Charles Humphrey, Larry Clark.



Girls' 4-H Club

Bottom Row, left to right: Mary Wigg, Sally Stillwell, Oveida Mills, Christine Harrison, Mary Elizabeth Green, Pauline Smith, Evelyn Smith, Ann Carroll. Middle Row: Joanne Biggers, Virginia Ragin, Judy Bennett, Jean Ray, Joyce Gray, Forrest McDonald, Clara Mae Brown. Top Row: Betty Land, Idell Register, Jane Waters, Nancy Fox, Juanita Luke, Matig Harper.



Letterettes

First Row: June Harriett, Bobbie Stewart, Bobbie Varnadoe, Peggy Jo Hull, Miss Satterwhite. Top to bottom: Shirley Waters, Meredith Payne, Jearline Jackson, Leah Roskosh. Picture not available: Bec Jay Bailey.

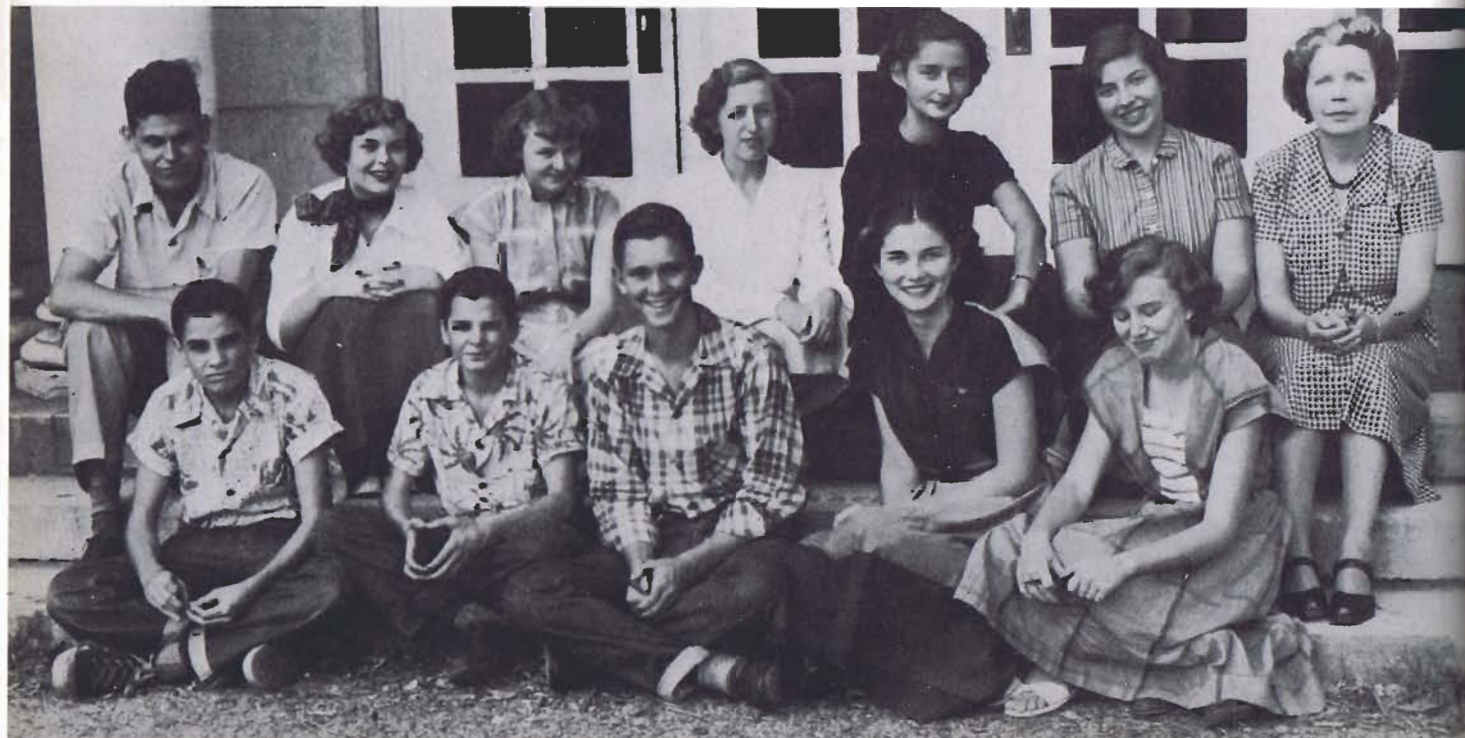


Little Women

Joan Bledsoe, Twila Conway, Beverly Wattles, Iris Smith, Meredith Payne, Linda Lee, Lota Bruce, Donna McNab, Norma Jean Bainbridge, Berta Sue Ferrell, Sharon Peck, Myra Jean Mayo, Thelma Harvey, Joyce Gray, Merle Wilder, Bobbie Stewart, Doris Smith, Dottie Culpepper, Winnie Jones, Fobbie Vaughn, Pee Jay Bailey, Jean West, Jane Reese, Forrest McDonald, Jackie Lewis, Jessie Ann Sanders, Martha Taylor, Barbara Seigel, Peverly Ramage, Nancy Reel, Anne Ogleshy, Judy Hardenburgh, Sally Neck, Sonia Westbury, Demia Lewis.

Jr. Classical League

Row 1: Clarence Wells, Gerald Wells, Tommy Ladd, Jean Ray, Sara Butler. Row 2: Cecil Baughman, Demia Lewis, Patricia Register, Irma Bainbridge, Joyce Gray, Barbara Seigel, Mrs. Austin.



Los Matadores

Row 1: Mr. Chastain, John Wester, Joe Stock. Row 2: Berta Sue Ferrell, Jackie Hogarth, Martha Lee Hughes. Row 3: Carol Carter, Patricia Brooks, Reunette Lane.



Los Tores Valientes

Row 1: Bee Jay Bailey, Linda Lee, Norma Jean Bainbridge, Shirley Davis, Lois Guilford, Nancy Futeh, Ha Jane Saucerman, Irene Barber, Jeannette Harriett. Row 2: Donna McNab, Lota Bruce, Roberta Dixon, Margaret Griffin, Thelma Harvey, Anne Oglesby, Myra Jean Mayo, Sally Neck, Jackie Lewis, Andrew Ebstathion, Joe Winsted, Mr. Chastain, Fred Williams.

Los Didelfos

Row 1: Pauline Smith, Patricia Adkins, Marianne Tenney, Pat Jeffords, Diane Turner, Eunice Glisson, Dorine Eubanks. Row 2: John Causey Tillotson, Louise Dupree, Pat Harrison, Clarice McGee, Ann Baughman, Shirley Lane, Jo Ann Chester, Jackie Scott. Row 3: Martha Lee Horton, Sonia Westbury, Martha Taylor, John Tilghman, Mr. Chastain, Hans Hansen, Calc Ernsberger, Donald Shields.



Homecoming Coronation



Industrial Arts

Row 1: Billy Hamilton, Charles Vaught, Bruce Averill, Marvin Divers, Billy Turner, F. J. Fearnside, Joe Maltby.
Row 2: John Sistrunk, Gordon Buckles, Charles Gale, George Willis, Jackie Methvin, Louis Earl Tenney, George Brown, Mr. Charles Smith.



Linda Lee, Kenneth Minton, Eddie Mathews, Ray Owens.

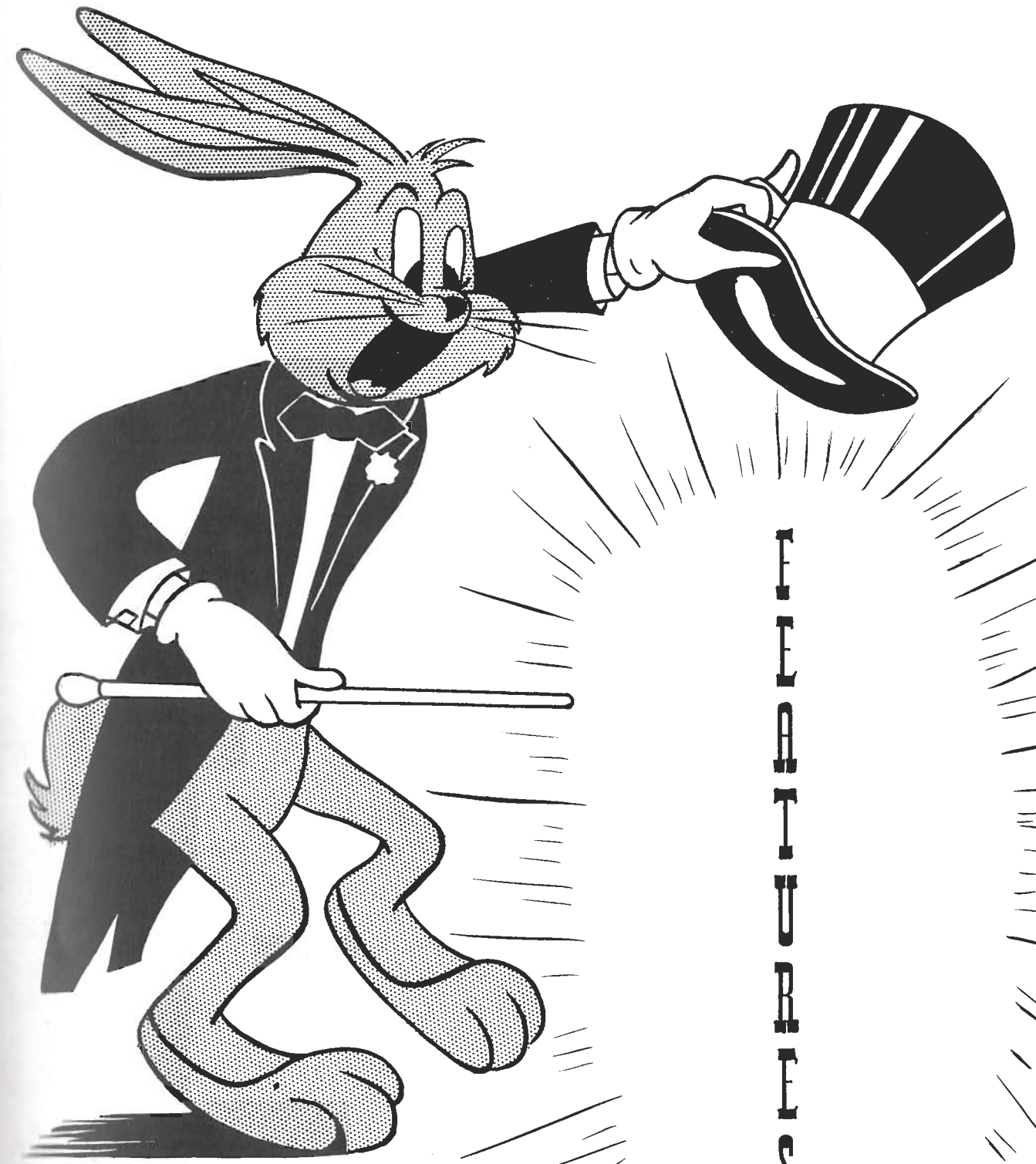
Varsity Club

Row 1: W. M. Wilson, Claude Harper, Charles Vaught, Douglas Miller, Herbert Bray, Donald Williams, Pat Green, Eddie Mathews. Row 2: Coach Smith, Kenneth Minton, Billy Flanders, Coach Maman, Gene Mast, Roy Johnson, Joe Mullis, Coach McDonough.



Senior Dance





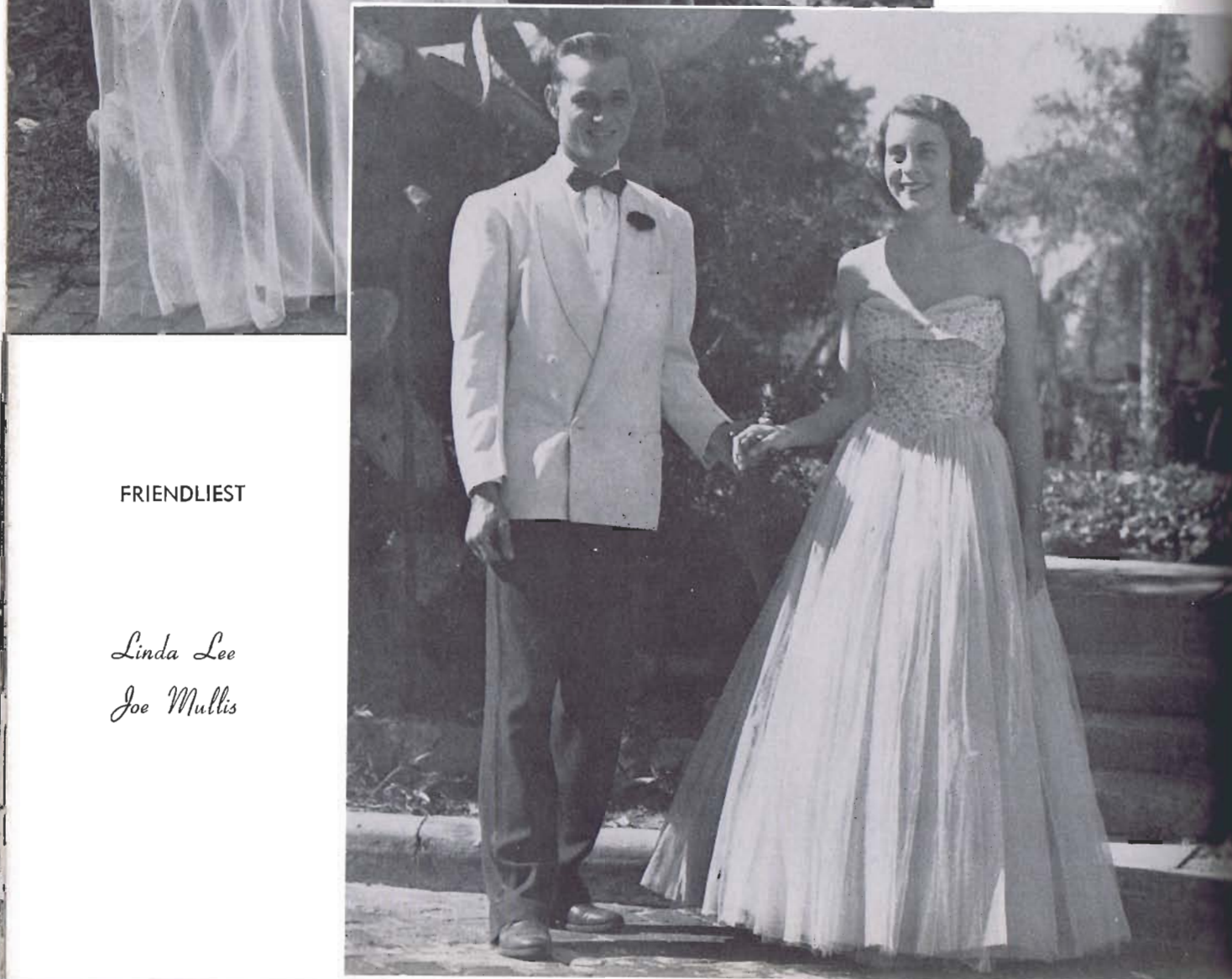
WHEELS

WDT



BEST ALL AROUND

*Peggy Jo Hull
Ack Jones*



FRIENDLIEST

*Linda Lee
Joe Mullis*

BEST LOOKING

*Meredith Payne
Douglas Miller*

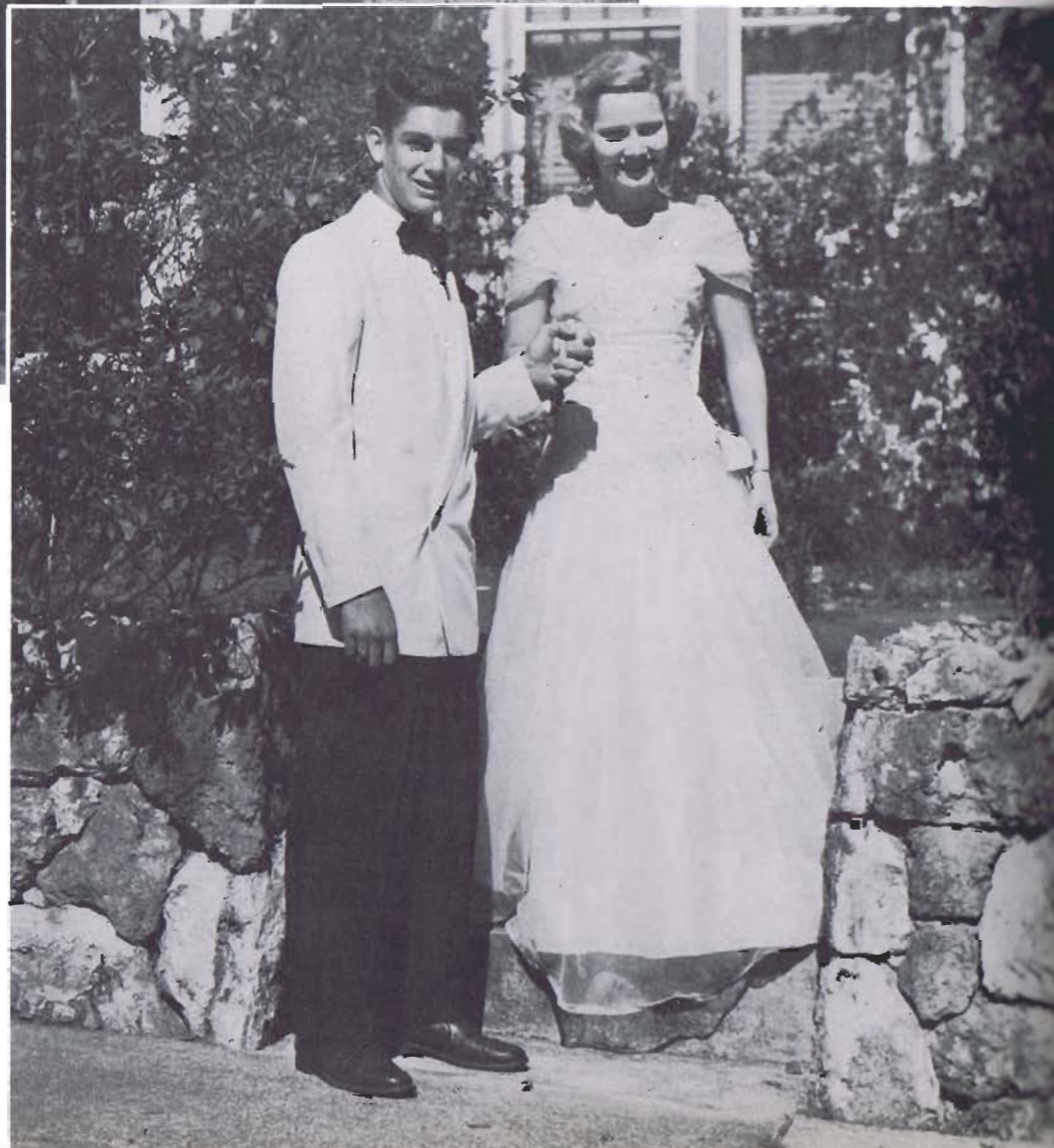
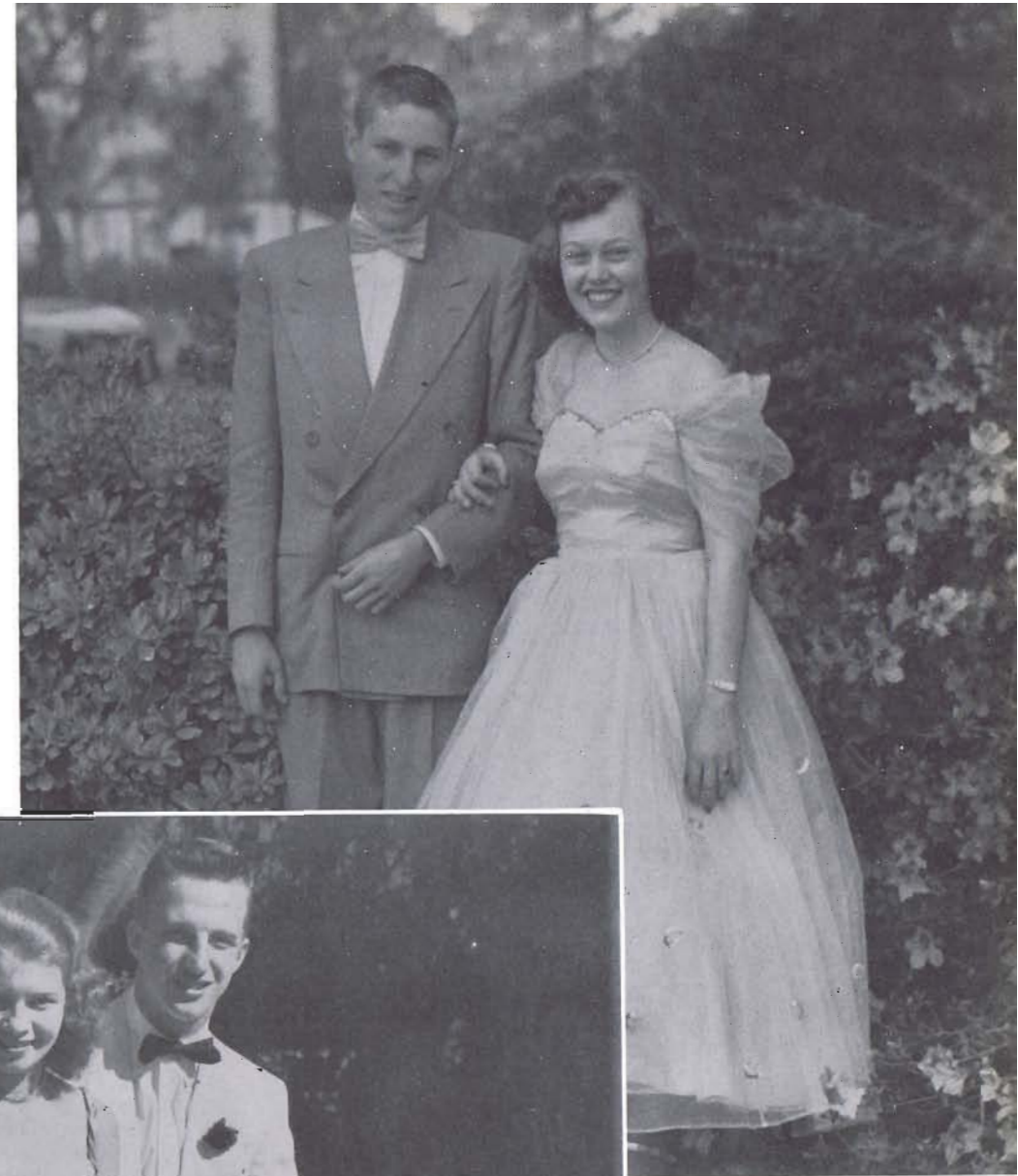


MOST LIKELY TO
SUCCEED

*Lorraine Hodge
Don Ladd*

CUTEST

*Berta Sue Ferrell
Gene Mast*



BEST PERSONALITY

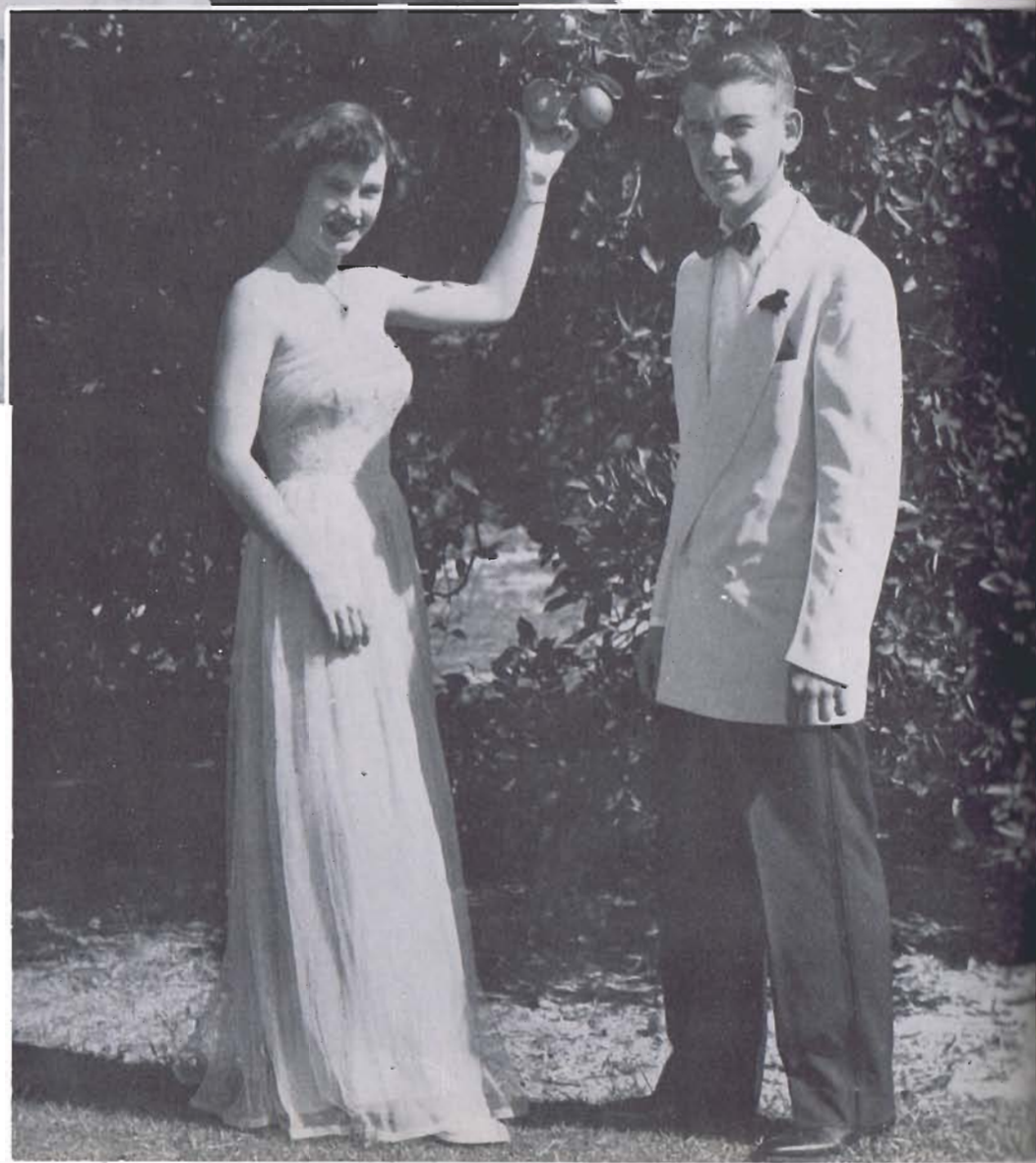
*Merle Wilder
Claude Harper*





MOST ATHLETIC

*Barbara Varnadoe
Eddie Mathews*



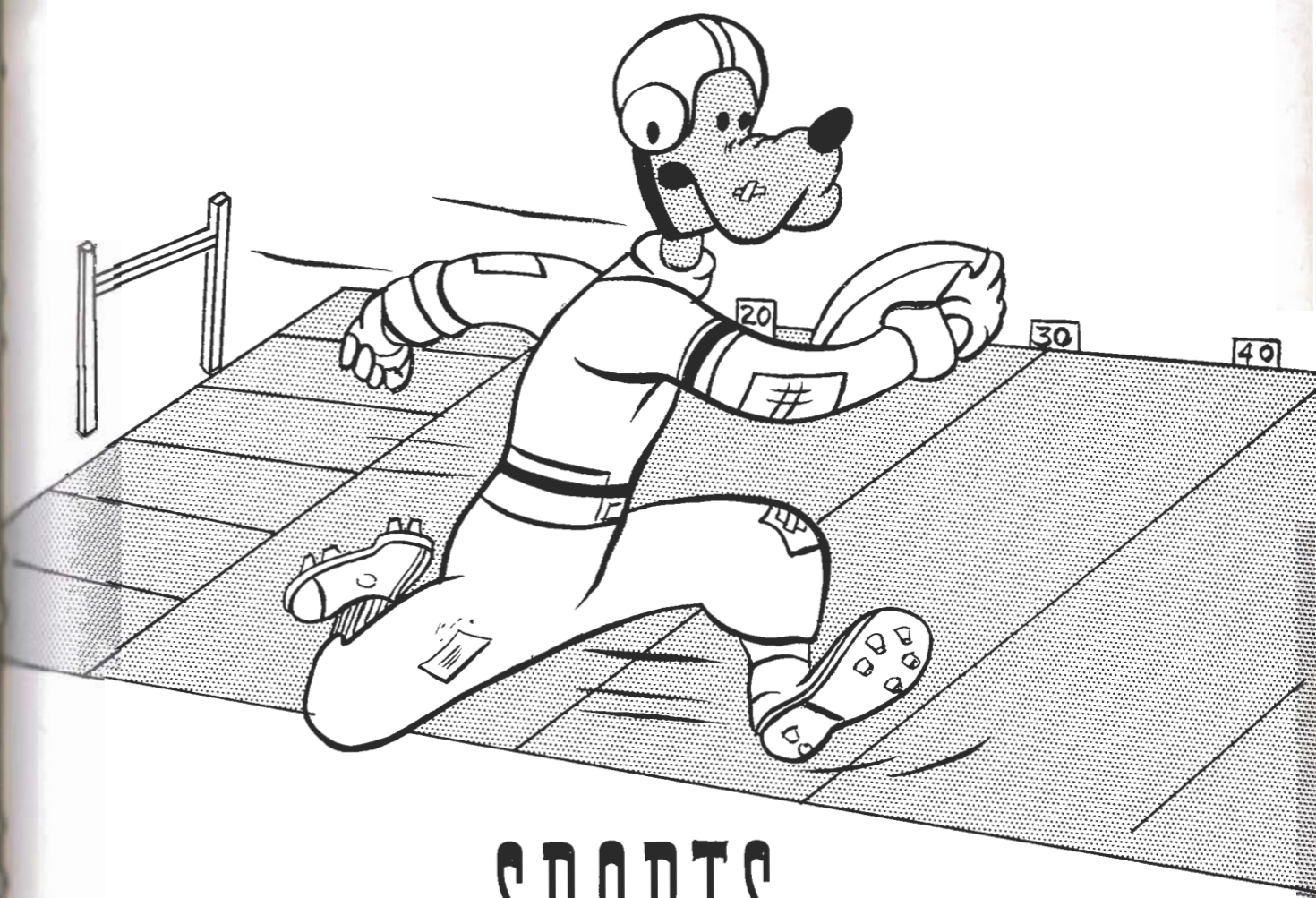
BEST SCHOOL
SPIRIT

*Shirley Davis
Wilford Thompson*



BEST DANCERS

*June Harriett
Alan Jones*



SPORTS





EDDIE MATHEWS
All-District
.333

WESS GLISSON
All-District
.298

CHARLIE WELLS
All-District
.273



DOUGLAS MILLER
All-District
.324

B. T. TILTON
.369

CHARLES VAUGHT
.429

GENE MAST
.286



DONALD WILLIAMS
.243

DICK BIDDLE
.309

BILL SUTTLEMYRE
.275



Boys' Basketball

Row 1: Donald Guthrie, Billy Turner, Teddy Efstathion, Bruce Hall, Samuel Feldman, Leo Green. Row 2: Paul Elliot, Billy Germany, Andrew Efstathion, William Morton, Louis Earl Tenney, Richard Westbury, Richard Varnadoe. Row 3: Joe Mullis, Manager; Douglas Miller, George Willis, George Emerson, Gene Mast, Jimmy Smith, Eddie Mathews, Tommy Newman, Donald Bivings, F. J. Fernside, Bobby Barrentine, Robert McDonough, Coach.

COACH ROBERT McDONOUGH

JOE MULLIS, Manager





GEORGE EMERSON
DOUGLAS MILLER
EDDIE MATHEWS



JOE MALTBY
Back
BURT REVELS
Guard



EDWARD DEAN MATHEWS
Back
JOE MULLIS
End



GEORGE WILLIS
Back
KENNETH MINTON
Tackle



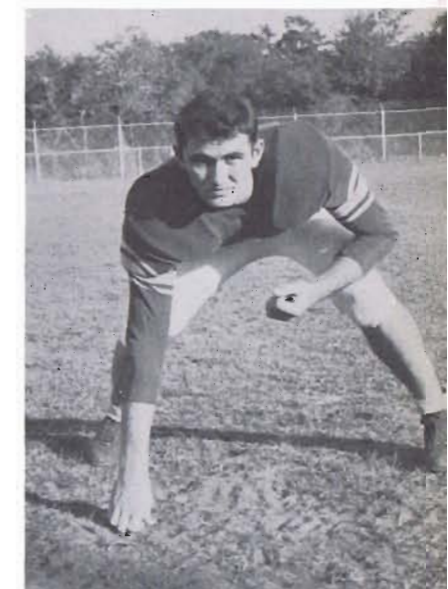
GEORGE WILLIS
JIMMY SMITH
BOBBY BARRENTINE



DOUGLAS MILLER
Back



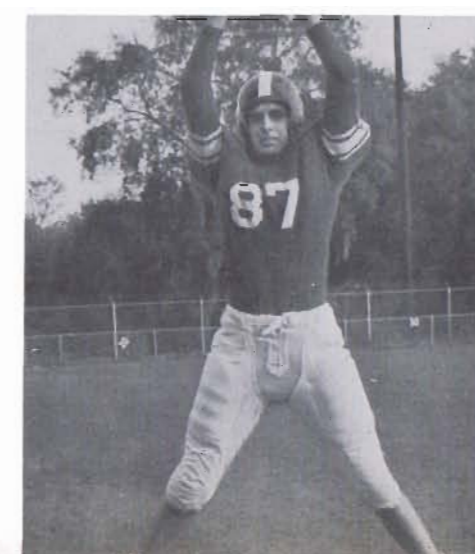
ACK JONES
End



RALPH HITCHCOCK
Guard



DONALD BIVINGS
TOMMY NEWMAN
F. J. FERNSIDE





GENE MAST
Center



BILL FLANDERS
End



BUNKY ROBERTS
Tackle



Maroons'

Row 1: Joe Maltby, Donald Williams, Louis Earl Tenney, Ack Jones, Toy Jackson, Paul Elliot, Ralph Hitchcock, Bill Flanders, Bobby Barrentine, Billy Turner. Row 2: Dicky Ryals, Manager; Douglas Miller, George Willis, Joe Mullis, Kenneth Minton, Ronny Raskush, Jimmy Carter, Burt Revels, Melvin Harvey, Herbert Bray, Eddie Mathews, Claude Harper, Phillip Solano, Manager. Row 3: Coach Smith, Teddy Elstathion, Billy Germany, Howell Smith, Frank Adams, Freddy Williams, Pat Green, Samuel Feldman, Coach MacDonough, Jack Winsted, Wilford Thompson, F. J. Fernside, William Morton, Kenneth Wilkinson, Owen Ramsey, Coach Maman.

Homecoming Attendants

Left to right: Howard Tillis, Peggy Jo Hull, Linda Lee (Queen), Ray Owens (Escort), June Bennett, Owen Ramsey.

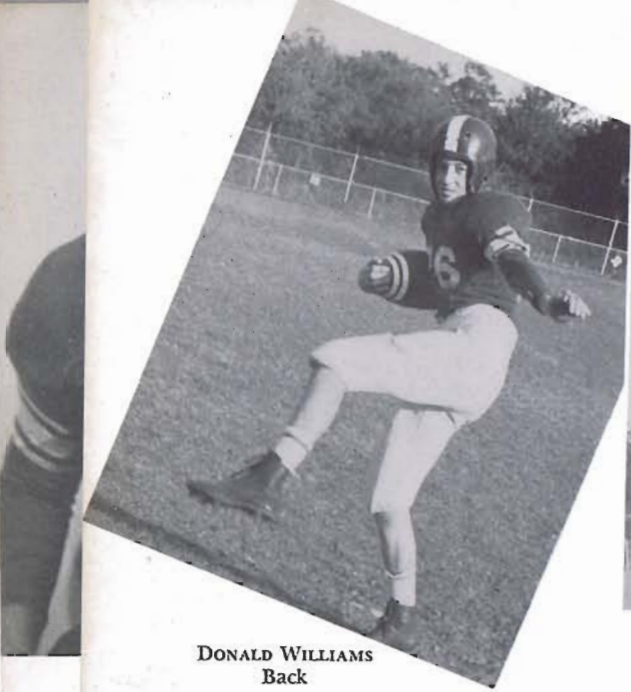


All East Florida Conference

Burt Revels, Eddie Mathews.

Douglas Miller, Claude Harper.





DONALD WILLIAMS
Back



RONNIE ROSKOSH
Guard



HERBERT BRAY
End



JIMMY CARTER
Center



MELVIN HARVEY
Tackle



TOY JACKSON
Guard



CLAUDE HARPER
Back



LOUIS EARL TENNEY
Back



BOBBY BARRENTINE
Back



A Squad Cheerleaders

Left to right: Peggy Hull, Captain; Leah Roskosh, Bobbie Varnadoe, June Harriett, Bobbie Sewart, Jearline Jackson, Edna Patrick, Lillian Stafford.

B Squad Cheerleaders

Left to right: Sally Neck, Billie Kimberland, Myra Jean Mayo, Anne Oglesby, Judy Hardenburgh, Betty Jo Stewart, Midge Dyal.





PEGGY HULL, *Captain*

LEAH ROSKOSH

BOBBIE VARNADOE



LILLIAN STAFFORD



BOBBIE STEWART



JEARLINE JACKSON

EDNA PATRICK

JUNE HARRIETT



Wildcats

Row 1: Billie Kimberland, Betty Jo Stewart, Lillian Stafford, Midge Dyal, June Chancey, Ann Reese, Jeanette Harriett. Row 2: Yancey Murray, Patty Jeffords, Emma Davis, Shirley Waters, Barbara Varnadoe, Shirley Davis, Norma Dean Barber, Jeanine Parker. Row 3: Coach Doris Satterwhite, Joan Gambill, Bee Jay Bailey, Edith Clark, Joanne Baggett, Judy Hardenburgh, Jean Ray, Nell Bryan, Dolores Musgrove, Manager Donna McNab.

COACH DORIS SATTERWHITE

BASKETBALL SCORES 1952

MANAGER DONNA MCNAB

	Visitors	"Wildcats"
Ft. McCoy	47	39
"B" Squad	16	37
Melrose	24	33
Starke	55	46
Hastings	14	40
"B" Squad	12	39
Bunnell	50	52
"B" Squad	16	38
Seville	34	42
"B" Squad	28	15
Immaculate Conception	28	65
Melrose	39	46
St. Augustine	19	21
"B" Squad	30	26
Bunnell	48	54
"B" Squad	26	47
Hastings	27	43
"B" Squad	9	30
Starke	56	33
St. Augustine	29	35
"B" Squad	20	20
Seville	42	38
"B" Squad	26	17
Daytona Beach (Mainland)	23	53
"B" Squad	31	28
Ft. McCoy	37	45
"B" Squad	15	38
Daytona Beach	26	30
"B" Squad	12	25

VARSITY

Total Games Played	.17
Won	13
Lost	4
Tied	0

"B" SQUAD

Total Games Played	12
Won	7
Lost	4
Tied	1





JEARLINE JACKSON
"Slightly Dangerous"



JOANNE BAGGETT
"Shooting Bucket"



SHIRLEY DAVIS
"Free Shot Artist"



LILLIAN STAFFORD
"Little But Fast"



BEE JAY BAILEY
"Tall and Aggressive"



BOBBIE VARNADOE, Captain
"Fast and Scrappy"

JOAN GAMBILL
"Steady and Dependable"

JEAN RAY
"Always There"



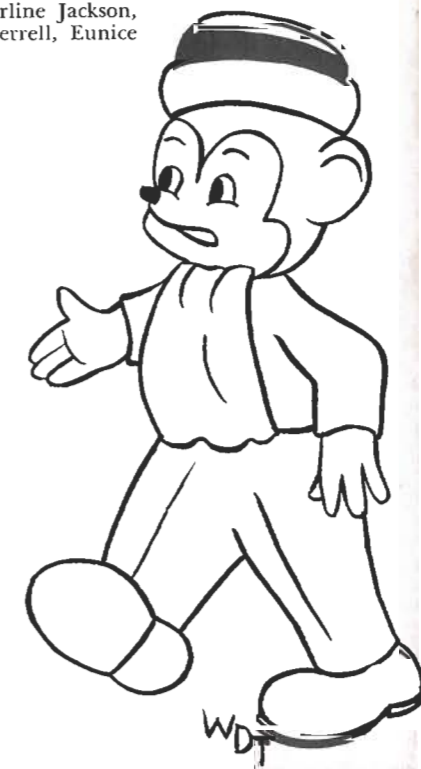
Girls' Softball Team

Row 1: Joanne Baggett, Jeanette Harriett, Paulette Smoak, Barbara Varnadoe, Jearline Jackson, June Bennett. Row 2: Coach Doris Satterwhite, Jeanette Broadway, Berta Sue Ferrell, Eunice Davis, Jean Ray, Reunette Lane (Manager), Shirley Waters, Joyce Smith.

SCORES

	Visitors	Us
Seville	3	6
Starke	6	18
Seville	3	18
Starke	6	12
Seville	2	1
Seville	12	25

Softball trophy won by Freshman Class of 1951.



PROPHECY

ARTIE ALLARD—Artie and Bill have completed their house on Palm Avenue and are now raising a family.

JACKIE ANDERS—The little tot is still wondering what she ain't got! It couldn't be a husband, could it, Jackie?

BEE JAY BAILEY—Is still driving Boydie's car around looking for a man.

NORMA JEAN BAINBRIDGE—All Seniors of '52 will be interested to know that Norma Jean has accepted a job as a "Camel Walk" dancer at the Devil's Elbo Beach Club.

IRENE BARBER—Is still in the foreign lands doing successful missionary work.

JUNE BENNETT—Is still giving those boys a fit. Wonder who she is waiting on?

THELMA BRADSHAW—Is still wondering whether she wants to be a career girl or a house wife.

JOSEPHINE BRANNEN—Is still following Gilbert, with eight stair steps behind.

PATRICIA BROOKS—Is now following Furman from station to station.

RUTH BROWN HERBERT—Ruth and Don have now taken over the "trucking firm."

LOTA BRUCE—Is quite a popular girl now. She is modeling sweaters for Shepard Knitwear Co. in New York.

CHRISTINE CALLAHAN—Has finally moved to Green Cove Springs where she can be near her weakness—sailors.

KATHRYN COBB—Has all kinds of brains. She is publishing her own dictionaries now.

TWILA CONWAY—Has retired to an old maid's home after selling her chain of Burlesque Theatres.

DOTTIE CULPEPPER—The physics brain is now head of a chemistry department at the University of Florida.

SHIRLEY DAVIS—Has gone into raising her pride and joy—"little musclemen".

BERTA SUE FERRELL—The familiar girl in DeLand is now president of the Sigma Nu Fraternity.

ANNETTE FUTCH—Annette is still refusing her many admirers, content with her work at the Linda. If you see her staring at the men as they come in, it is only because she is a talent scout.

DORIS GORNTO—Is still sitting at Riverview waiting on "Corky" to come home.

ELSIE GUENTHER—Is running a beauty shop of her own and seems to be making a big profit.

JUNE HARRIETT—Has just published the book on GOING STEADY AND BREAKING UP.

LORETTA HERBERT—Doesn't have to wait for letters any more. John is here with her to tell her "sweet nothings" rather than write them.

LORRAINE HODGE—After her many years of study, she has finally settled the dispute in Korea.

JACKIE HOGARTH—Is now organist at Bok Tower. She is doing a mighty fine job.

MARTHA LEE HUGHES—Is happy. She is teaching those "darling little Elementary students".

GLAYDINE HUTCHINSON—Has just taken over Nelson King's place as announcer on the W.C.K.Y. Jamboree.

PEGGY JO HULL—Peggy has finally succeeded after many years of hard work in fattening her "peanut hulls".

NEDRA KELLEY—Has taken over "Pop" Daley's place at Goraieb's playing jazz.

RUENETTE LANE—Is now catcher for the Azaleas and is batting 1000.

LINDA LEE—Is still crying when she says "good-bye", along with the song, "Don't ever Leave Me, Joe".

BETTY LEMMOND—After years and years of hard work, she has succeeded in raising sweet lemons.

WAREATHA MANNING—Wareatha is happy now, she was finally named head of the "Slaughter House".

DONNA McNAB—is still waiting on Tommy D. to come home. She surely is patient.

ELIZABETH MORTON—Liz is now in Africa animal hunting. She has her own circus now.

MEREDITH PAYNE—Has finally found her one and only man after many years of hard, strenuous searching.

EDNA PATRICK—Edna, poor girl, is still trying to get results from her senior feature.

SHARON POLK—Even now, ten years later, we can't say. We are still trying to decide what will happen to Sharon. She just won't settle down to one man.

JANE REESE—Has finally settled down in Lake City to her ideal man.

LOUETTA SASSER—Has just opened her own "Showboat" at Stoke's Landing.

IJA JANE SAUCERMAN—Ija Jane and Jack are now happily married and are living in Peniel.

MARY JANE SAUNDERS—That towering girl is now president of the Six Footers Club.

BETTY ANN SMITH—Is now content with being an "old maid". She supports herself on her wages that she makes as bouncer at Shady Rest.

DORIS SMITH—Oh; Here is a woman on a stage. What can she be doing? Making a speech? No, her mouth is open too wide for that and keeps it open too long. Ah, she is a famous singer—our old class-mate, Doris Smith.

MARGARET SMITH—Has just taken Dagmar's place on television.

BOBBIE STEWART—Has joined Admiral Johns and is raising little sailors.

MARY JO SYME—Is now a Dental Hygienist in Dr. Hedick's office.

MARY JOANNE THOMPSON—The lucky girl has finally made a success of life.

NELDA TYRE—Nelda and Marvin have finally stopped fussing and monkeying around long enough to get married.

BARBARA VARNADOE—Is now Mrs. Floyd Bridges and she is busy teaching her children how to play basketball and baseball.

BOBBIE VAUGHN—Is still debating over whom she wants to go with. Wonder who it will be?

MARTHA WAITS—That high society girl is now the Louella Parsons of our old fair city, Palatka.

MERLE WILDER—Merle and Don are still trying to explain how and where they got stuck.

CECIL BAUGHMAN is now preacher at the Baptist Church. Poor boy, we never thought he would make it.

HERBERT BRAY—Still thinks he is God's gift to women, driving that Cadillac.

JIMMY BRYAN—After the big city election Jimmy was elected to be Palatka's street sweeper for the next twenty-five years.

GORDON BUCKLES—He is now the proud owner of a cattle ranch in Texas.

TOMMY CRABTREE—Is still driving a Standard Oil Gas truck.

BILLY CUTRER—Is still employed by Warren Sherwood at Lovett's grocery store.

BILLY DeFREESE—Has taken over Mac McCall's place over W.W.P.F.

GEORGE EMERSON—and WILFORD THOMPSON—are running for an election of who draws the most like Walt Disney.

BILLY FLANDERS—Poor Billy is still trying to catch up on his sleep. Maybe he could if he would leave the girls alone.

WESS GLISSON—Wess and Thelma have finally made the grade. Wess has finally run his father out of business.

CLAUDE HARPER—Has finally become an actor. He has taken Jerry Lewis's place in the movies.

HAROLD HITCHCOCK—is now out of the service and working strong again at Angel's.

TOY JACKSON—"Frog" and Sally have now settled down in their little rose covered cottage taking care of their "little tadpoles".

ROY JOHNSON—Has now taken over Mrs. W. W. Carter's place in teaching Democracy.

ACK JONES—Has opened his own funeral home and has hired John Berry Davis, his old employer.

ALLEN JONES left and we haven't seen him since.

GENE MAST—is still trying to dodge women. "Nuff Said."

LEROY JUNE—He and Pud are now happily married, but he still holds the title of most chased after boy.

DONALD LADD—Has just taken over Mr. Eastham's place as principal of this school.

MEREDITH MAJOR is still chasing Sharon. Wonder what will happen?

EDDIE MATHEWS—Eddie and Rae are now traveling around since he is now playing "pro" baseball.

DOUGLAS MILLER—He is now coaching football at Notre Dame with Dottie right along beside him.

KENNETH MINTON—His "puddle jumper" has won first prize in the Annual Auto Show.

ALLEN MONROE—Has taken over Rudolph Valentino's place in Hollywood.

DGYLE MOODY—is still "scooting" around in his hopped up Ford.

JOE MULLIS—He and Jane are still having troubles, but they are soon to be married.

OWEN RAMSEY—Has made all conference on the Yale football team. He weighs 225.

BURT RAVELS—Is running a law office for women clients only. Meredith is his first customer.

RONNIE ROSKOSH—Is still getting tickets for speeding to Orange Mills.

BILLY SADLER—Is Mr. America of 1962. How did this happen?

DONALD SCHWEITZER—Still thinks he's a lady's man. Some people never learn.

WARREN SHERWOOD—Is now head manager of Lovett's Grocery Store.

JOE STOCK—Is now competing with Mr. Osterburg in teaching Geometry.

ROBERT STRICKLAND—After all these years, he has finally finished his stamp collection.

BILL SWILLEY—Has taken over Charles Atlas' school for 97 lb. weaklings.

GERALD WELLS—Is still trying to figure how he ever got out of high school.

JOHN WESTER—Is now a Spanish interpreter for the U. N.

LEROY WILKINSON—Is still hitchhiking from Hollister to Palatka to see someone.

DONALD WILLIAMS—Is still a Pfc. in the Marines. What happened to him?

W. M. WILSON—Is now running a "home permanent shop" for boys. Gene Mast was his first customer.

Committee—Linda Lee

Louetta Sasser
Norma Jean Bainbridge
Bobbie Stewart
Peggy Jo Hull
Meredith Payne
Kathryn Cobb



SENIOR CLASS WILL

We, the Senior Class of Mellon High School of the year of 1952, of the city of Palatka, of the County of Putnam, of the state of Florida, of the nation of the United States, of the continent of North America, of the hemisphere of the West, of the planet of Earth being of unsound mind, unstable memory and of unhealthy body do hereby declare this our last will and testament in the manner and form that follows:

- All our charms and good manners in class.
- Our ability to cut class and not get caught.
- All our old books and desks. (In hopes you use them more than we did.)
- Our dignity, privileges, and cherished front seats in chapel to the Seniors, of '53.
- Last, but by no means least, we bequeath individually the following:
 - I, ARTIE ALLARD, leave my freckles to Martha "Red" Taylor.
 - I, JACKIE ANDERS, leave my quiet and bashful ways to Anne Oglesby.
 - I, BEE JAY BAILEY, leave for Tally and I'm taking Boydie's car with me.
 - I, NORMA JEAN BAINBRIDGE, leave to start an "Old Maids Club."
 - I, IRENE BARBER, leave my ability to go to church to Floyd Geoghagan.
 - I, JUNE BENNETT, leave my ability to skip school and not get caught to Shirley Kemp.
 - I, THELMA BRADSHAW, leave my ability to get along with Miss Farrar to the underclassmen.
 - I, JOSEPHINE BRANNEN, leave to follow my Gilbert wherever he goes.
 - I, PATRICIA BROOKS, leave my 19 inch waist to Judy "Splinters" Hardenburg.
 - I, RUTH BROWN HERBERT, leave to raise a family.
 - I, LOTA BRUCE, leave my Sweater Girl Figure to Jearline "Hot Rod" Jackson.
 - I, CHRISTINE CALLAHAN, leave my ability to go with sailors to Louise Dupree.
 - I, KATHRYN COBB, leave my graceful walk and lovely posture to Patty Jeffords.
 - I, DOTTIE CULPEPPER, leave because Doug is leaving.
 - I, SHIRLEY "GENE" DAVIS, leave my perfect attendance record to Darthula Wall.
 - I, BERTA SUE FERRELL, leave my sweet disposition to Jean Mathews, may she use it wisely.
 - I, ANNETTE FUTCH, leave my secret to natural blonde hair to any of you lucky Juniors who long for blonde hair.
 - I, DORIS GORNTO, leave my dark and daring eyes to whom ever needs them.
 - I, ELSIE GUENTHER, leave to start my own beauty salon.
 - I, JUNE HARRIETT, leave the joys, pleasure, sacrifices, particularly sacrifices, of going steady to Thelma Harvey.
 - I, LORETTA HERBERT, leave my quiet voice to Kay Wise.
 - I, LORRAINE "Brains" HODGE, leave Fred Williams a cart to haul his books in.
 - I, JACKIE HOGARTH, leave to wander the four corners of the earth; Object—Matrimony.
 - I, MARTHA LEE "Chubby" HUGHES, leave my vitamin pills to Iris Smith.
 - I, GLAYDINE HUTCHINSON, will my ability to get along with all my teachers to Darlene Ellis.
 - I, PEGGY JO (I'll never be free) HULL, leave my title of Best All Around to Leah "Le Le" Roskosh.
 - I, REUNETTE He! He! LANE, leave my "perpetual pink" face to F. J. J. for Jerry Fernside in case he needs to blush.
 - I, NEDRA KELLEY, leave my angelic ways to Dorine Eubanks.

- I, LINDA "Queenie" LEE, leave my hour glass figure to Midge Dyal.
- I, ELIZABETH LEMMOND, leave to take care of my Sammy.
- I, WAREATHA MANNING, leave my cute little baby face to Nancy Reel.
- I, DONNA McNAB, leave my beautiful green hair to Jean Stewart West.
- I, ELIZABETH "Quiet as a mouse" MORTON, leave my great intellect to Sarah Butler.
- I, EDNA (I like all men) PATRICK, leave my flirting ways and come hither look to Billy "Bashful" Kimberland.
- I, MEREDITH "good looking" PAYNE, leave my beautiful face and charming personality to Barbara Siegal.
- I, SHARON "I can't decide" POLK, leave my ability to talk a lot without getting tired to Joanne "Bucket" Baggett.
- I, JANE REESE, leave my dainty little feet to Carol Carter so she can throw away her size 8 shoes.
- I, LOUETTA SASSER, leave all shorthand books to all the future shorthand students. (They sho' don't know what they're gettin' into.)
- I, ILA JANE SAUCERMAN, leave to become a missionary in the far east.
- I, MARY JEAN SAUNDERS, leave my towering height to Alice "Bart" Ferrell.
- I, BETTY ANN SMITH, leave to find a suitable man.
- I, DORIS SMITH, leave my flat notes and squeaky voice to Jean Ray.
- I, MARGARET "Baby" SMITH, leave to join Carol.
- I, BOBBIE STEWART, leave to Betty Jo Stewart my protege and little sister, my scatter-brain mind, "I can't stand it any more."
- I, BOBBIE "Speed" VARNADOE, leave my prized and cherished position on the basketball team to anyone who is worthy of taking my place.
- I, BOBBIE VAUGHN, leave my lovely toothpicks between Nell Singletary and Jo Touchton with the remark "two beautiful legs on one girl is just too, too, much!"
- I, MARTHA "Sistie" WAITS, do hereby will all old excuses for getting out of class to anyone who has enough scotch tape to hold them together.
- I, MERLE "La Don" WILDER, leave my ability to make good grades to my "little" sister Frances.
- I, CECIL "preacher" BAUGHMAN, will not.
- I, HERBERT "I can get a date with any girl" BRAY, leave so that the other boys can have a chance.
- I, JAMES (Jimmy) BRYAN, leave my manly ways with the women to Paul Elliott.
- I, GORDON BUCKLES, leave my ability to kill deer out of season and not get caught to Ronald Ballard.
- I, TOMMY CRABTREE, leave all my cigarettes and women to Pat Brewer.
- I, BILLY CUTRER, leave my ability to get along in school to Myra Jean Mayo.
- I, BILLY DeFREENSE, leave my sultry voice to Delano Wilkes.
- I, GEORGE "Lover Boy" EMERSON, leave my ability to dangle 3 or 4 women on a string at one time to Howard "Red" Tillis, (Watch it the string might break.)
- I, BILLY "Sleepy" FLANDERS, leave nothing because no one is worthy of my many charms and handsome features.
- I, WESS (Dum Dum) GLISSON, leave my ability to skip classes and not get caught and even graduate to Philip Pardee.
- I, CLAUDE "Handsome" HARPER, leave my irresistible approach to women to Ray Owens.
- I, HAROLD "Flip" HITCHCOCK, leave to take over Angles Dining Car."

- I, TOY "Frog" JACKSON, leave my deep and manly voice to Teddy Efstathion.
- I, ROY JOHNSON, leave my skinny physique to Mr. Chastain.
- I, ACK "Keyhole" JONES leave the Key Club to anyone willing to do all the work.
- I, ALLEN JONES, leave my dancing feet to Roy "Goose" Graves.
- I, LEROY JUNE, leave my twinkling eyes and bewitching smile to Richard Varnadoe.
- I, DONALD "Pickle" LADD, leave my position of Editor of the Mellon Patch to anyone who wants a thousand headaches.
- I, MEREDITH MAJOR, leave my ability to throw good parties to anyone who can afford it.
- I, EDDIE "Knobb" MATHEWS, leave my handsome features and daring personality to Ward Hancock, may he be the idle of all girls as I have been.
- I, GENE "Cutie" MAST, leave to join the other bachelors of the world.
- I, DOUGLAS "Flash" MILLER, feeling stingy, take with me to college my good looks and personality.
- I, KENNETH MINTON, will and bequeath my beautiful car to anyone who thinks he can drive it.
- I, ALLEN MONROE, leave to start my own packing house in San Mateo.
- I, DOYLE "Cooty" MOODY, leave my beloved dimple to Jimmy (Bo Bo) Musslewhite.
- I, JOE MULLIS, leave my ability to play football to Sammy (I'll be on the A-squad someday) Feldman.
- I, OWEN "Junior" RAMSEY, leave because of so many requests.
- I, BURT REVELS, leave my ability to get a crush on the cutest girl in school to anyone else who wants to love in vain.

- I, RONNIE "Big Shot" ROSKOSH, leave to find some girl worthy of my many charms.
- I, BILLY SADLER, leave my gorgeous red hair to some lucky Junior—mainly Billy Germany.
- I, DONALD SCHWEITZER, leave Business English to Mrs. Elrod.
- I, WARREN SHERWOOD, leave P. H. S. to our dear and worthy Professor, Mr. Eastman.
- I, JOE STOCK, leave to homestead in Interlachen.
- I, ROBERT STRICKLAND, leave and I'm taking everything I've got with me 'cause I need it.
- I, BILLY "Red" SWILLEY, leave all my younger brothers and sisters to all the poor unsuspecting teachers.
- I, WILFORD THOMPSON, leave to take Clark Gable's place.
- I, GERALD WELLS, leave my manly physique to Jimmy Carter.
- I, JOHN WESTER, leave to take over Dennis Brewer's place on the Police Force.
- I, LEROY WILKINSON, leave. (Thank Goodness!)
- I, DONALD WILLIAMS, leave my snake charming abilities to Poodle Alford.
- I, W. M. "Spider" WILSON, leave my wavy hair to Robert Revels.

Witnesses:
 June Harriett
 Doris Smith
 Edna Patrick
 Bobbie Varnadoe



HISTORY

It was in September of 1940 that the Class of '52 first entered school. How can we ever forget that big day! We were young, innocent and especially dumb-founded when our Mothers left us. Soon the strangeness wore off, and the school was like a second home to us. Our hands and mouths were usually full of paste and our eyes glued on the big clock waiting for the recess bell—oh, how we loved to ride on Miss Pansy Pickens' wooden horse and play tag or dodgeball. We had lots of fun in the play house in Mrs. Sands' room too. We also started right out with our military training when every other day we were marched noisily down the hall to the music room to the tune of that well-known melody which is probably still being rendered by Mrs. Kelly. This was also the year Burt Revels, Doyle Moody, Jimmy Bryan, and John Wester were the Easter Bunnies in our play—

Oh, yes, and then to the second grade—our rhythmic band in which we all had a part in playing the drums, cymbals, wood block, bells, and furiously beating those two sticks together. Remember our "puppet show" we put on in Mrs. Bell's room and also our little store.

It was in the third grade that Betty Lemmond and June Harriett joined us—and Meredith Payne was late to school just about every morning and cried when Mrs. May made her go to the office for a permit. Shirley and Lota were majorettes this year and how we all envied them. Remember the romance that went on between "Guppy" Hodge and Wess Glisson (and when Meredith Major bought her a ring) and Betty Lemmond and Sonny Armstrong, and Patricia Brooks and Flip Hitchcock.

Somehow we got promoted to the fourth grade—which was up stairs and did we feel big. This is also where Louetta Sasser, Bertha Sue Ferrell, and Bill Swilly joined us. Many of us had to face reality this year—we discovered there were no Easter Bunnies, Fairies, and even worse—no Santa Claus. However we weathered this and settled down to geography and long division.

In the fifth grade Berta Sue and Twila Conway joined Lota and Shirley in becoming majorettes, the boys seem to turn to sports and the School Patrol was just getting organized.

The sixth grade proved to be a big year. Berta Sue and Donald Williams were the King and Queen of Halloween. Gene Mast and Doris Smith were pretty sweet on each other until Alton Moring interfered. June Harriett and Delano Wiseman and Norma Jean Bainbridge and Bobby Groholz were also the lovers of this grade. We found out that Mrs. C. O. Wright's bark was worse than her bite. Remember when Lorraine Hodge was the leader in the "stand-up strike" in Mrs. Larkins room!

Leaving the sixth grade and coming over to the High School was quite an experience for us. Mr. Farr got most of the boys acquainted with his paddle and this was the year Coach Maman and Miss Bush first taught us. All the boys had a crush on Miss Bush and the girls on Coach Maman. Remember Shirley Wakin's birthday party at the Coca-Cola Auditorium. This also seemed to be a big year for romance in our class. It seems as though Edna Patrick went steady with Bill Swilley and Herbert Bray. Gene Mast had quite a crush on Nina Williams until Wilford Thompson interfered. Toy Grady Jackson and Eddie Dean Mathews joined us this year.

Moving on to the eighth grade, we had to start bearing down a little more. Peggy Jo Jackson, Kathryn Cobb, Sharon Polk, and Douglas Miller joined us. We

seemed to have quite a few Girl Scout and Boy Scout parties and hay rides this year. Remember Mrs. Dalbo and her fairy tales she would tell us when she was substituting. This year it was Peggy Jo vs. Eddie Mathews, B. J. Baily vs. Ack Jones, and Bobbie Vaughn vs. Tommy Crabtree.

How proud we were when we finally reached the stage where we could yell "Freshie" in the School Song. Our poor lungs are still suffering from our enthusiastic outbursts of our Freshman year. This year began with the "Freshman Initiation"—belt lines for the boys and ridiculous looking dress for the girls as well as the lipstick-painted faces for both. One of the main high lights of that year was the Junior and Senior Banquet and Prom when Donna McNab was our Representative. Some of the lively girls of our class were elected freshman waitresses for the banquet and all dressed as "Robin Hood". Remember the slumber party Donna McNab had when all of us girls went swimming in the pool at 4:30 a.m., after an unsuccessful night of making taffy. We really envied Norma Jean Bainbridge and Linda because they got to drive their family "cars" alone. Linda Lee, Merle Wilder, and Bobbie Stewart joined us this year. Our Freshman "lovers" were: Bobbie Stewart and Cotton Cothron, Linda Lee and Douglas Miller, Sistie Waits and David Trombley, and Sharon Polk and Steve Rogero.

Although the Sophomores are supposed to be the excluded class, we saw to it that we got our noses into everything. Lorin Gainer was our representative to the Banquet that year. It was this year that the "love-bug" really got a hold of quite a few. Some of the steadies this year were: Linda Lee and B. T. Tilton, Kathryn Cobb and Ralph Sharpe, Dottie and Douglas, Eddie and Rae, and Sistie and Donald.

Our Junior year was really a busy one. We put on the play "Mama's Baby Boy" under the direction of Mrs. Paul Smoak and it really made a hit. We cleared enough on the play to put on a swell Banquet and Prom for those lucky Seniors. The theme was "Western." We had a time fixing our float for the "Homecoming Parade"—And thus our carefree life as Juniors came to a close.

We now find ourselves in the last part of our history—"Seniors so Mighty"! Yes, sir, we gladly slipped on those Senior rings, and while we are on the subject of rings it seems as though the "object of matrimony" has taken over most of our girls, not to speak of flashy diamonds they are practically blinding every one with. Yes, the Senior year has been the best year—one we will never forget. All the dances we have sponsored, our play, "The Late Christopher Bean," working on the annual and all the other activities that have gotten us out of classes. As all good things must come to an end, so must the Class of '52. We look back over these happy days and realize that the best part of our life was spent preparing for the future. From the time we were in the first grade—young, innocent and dumb-founded—we have been looking forward to the day of days—June 6—Graduation!!

We wish to thank all the members of the faculty and especially Mr. Eastham, as well as Mrs. Josephine Carter, Mrs. W. W. Carter, and Mr. Osterberg, our class advisers, for the experience and sportsmanship we have gained and for all the enjoyable times we have spent together.

SISTIE WAITS,
CLAUDE HARPER,
Historians.



BACKERS

WDT

OUR BACKERS

Ackerman-Stewart Drugs
 Angels' Dining Car
 Arthur E. Nelson
 Aubrey Chesire Grocery
 Azalea Construction Company
 Bailey's Auto and Electric Parts
 B. A. Wilkes Company
 Belk-Lindsey's
 Benedict Precast Concrete Co.
 Blake's, Inc.
 Bob Lee Motors
 Browning-Fearnside
 Browning Lumber Company
 Buster's Produce
 C. J. Mathews
 Carlin's Ice Cream Shop
 Check-R-Board
 Cicero's Drive-In
 City Drug Store
 City Novelty Works
 Clyde Rozier's Service Station
 Coursey-Murphy Furniture Company
 Couver's Office Supplies
 Darlene Shop
 Dave Broadway's Auto Service
 D. F. Dancy
 D. M. Thomas
 Dr. L. H. Keene
 Dowda and Millican
 East Palatka Fruit Market
 East Palatka Truck Stop
 E. B. O'Hara Loan Company
 E. F. Grossholz
 Ellis' Garage
 E. M. Bainbridge—Pontiac
 E. M. Hawkins
 Fashion Shop
 Felt's Tourist Court
 Ferrell Jewelry Company
 Florida Furniture Industries, Inc.
 Florida Truck and Tractor Company
 Frank Hancock Insurance Company
 Frank's Service Station
 Frank Wexler and Sons
 French Bootery
 Gem City Cleaners
 G. P. Duck
 Groceteria
 Harold Harden Safety Service
 Harrison Hickenlooper
 Harry C. Elrod Furniture Company
 Hastings Mattress and Upholstery Works
 H. E. Bray
 Henry Miller Service Station
 Herrington's Department Store
 Hilty's Greenhouse Studio
 H. J. Smith Service Station
 Hotel James
 Hudson Pulp and Paper Corporation
 Huntley Brothers
 Ideal Laundry and Dry Cleaners
 Jack's Cookies
 Jeter's Auto Sales
 J. M. Pounds Company
 Jones Clothing Store
 Julian C. Calhoun
 June's Garage
 J. V. Ford
 Kelley George, Jr.
 Kennerly Hardware Co., Inc.



FRESHMEN
 SCHOLAR

Key Club
 Lillian Dress Shoppe
 Linda Drive-In Theater
 Lewis Photoprint
 McLean Iron Works
 Market Basket
 Mar-Twin
 Mather Furniture Company
 Merrill Insurance Agency, Inc.
 Middleton and Middleton
 Moody Grocery
 Moore's Drug Store
 M. R. B. Building Supply
 Neck Plumbing Company
 N. J. Clifford
 Oliver and Garrett Company
 O. M. Webb 5c to \$5.00 Store
 Opal's Restaurant
 Owens' Tire Shop
 Pal Music Company
 Palatka Atlantic National Bank
 Palatka Bakery
 Palatka Clothing Company
 Palatka Coca-Cola Bottling Company
 Palatka Concrete Company
 Palatka Construction Company
 Palatka Daily News
 Palatka Flower Shop
 Palatka Lumber Company
 Palatka Millwork Company
 Philips' Brothers, Inc.
 Poultry Corner
 Price's Conservatory
 Putnam High Glee Club
 Putnam Radio and Television
 Ralph's Super Store
 Reddy Kilowatt
 Reynolds' Flower Shop
 Ryan Furniture Company
 St. Johns Box Company
 St. Johns Chevrolet
 St. Johns Hotel and Cafe
 Saunders Grocery
 Schramm Furniture Company
 Security Feed and Seed Company
 Selph and Son
 Sewing Center
 Shrenk Lumber Company
 Simmons Grocery
 Smart Shop
 Smith Products Company
 Snyder Building Supply Company
 Southern Auto Associate Store
 Stanton Dress Shop
 Suwanee Hydro Gas Company
 T. A. Cameron Concrete Company
 Tanner-McClamma Company
 T. Jordan Hancock
 Wattles' Printing Shop
 Western Auto Associate Store
 W. H. Beasley
 Williams' Body Shop
 Williams' Floor Company
 Wiseman's Service Station
 Witt Funeral Home
 W. J. Revels
 W. M. Thomas
 W. W. P. F.
 Yelverton Furniture Company

Autographs



Since the dawn of the century...

WE HAVE SPECIALIZED
IN THE PRODUCTION OF
OUTSTANDING COLLEGE
AND HIGH SCHOOL
YEARBOOKS



FOOTE & DAVIES, INC.

PHONE WALNUT 4600

POST OFFICE BOX 5109

ATLANTA